

DOMESTIC		
General Waste	Unit	Cost
General waste up to 240lt per person and/or per vehicle each day		FREE
Sedan, Station Wagon, SUV, >240lt	Each	\$7
Trailer (max 6x4)	Each	\$10
Ute	Each	\$10
Ute + Trailer (max 6x4)	Each	\$20
Trailer >6x4 (non-commercial)	Each	\$20
Truck or Trailer >6x4 (non-commercial carrying commercial quantity)	Tonne	\$115
	m <sup>3</sup>	\$50
Gas Cylinders	Unit	Cost
Gas Cylinders	Each	\$9
Green Waste & Mulch	Unit	Cost
<u>Uncontaminated</u> (e.g. no steel, plastic, concrete, soil, building products, treated timber) – <b>see below</b>		
Sedan, Station Wagon, SUV, Ute, Trailer (max 6x4)		FREE
Out of Region - Sedan, Station Wagon, SUV, Ute, Trailer (max 6x4)	Additional	\$30
Truck or Trailer >6x4	Tonne	\$32
	m <sup>3</sup>	\$20
<u>Contaminated</u>	Tonne	\$115
	m <sup>3</sup>	\$50
Tyres (Gatton only)	Unit	Cost
Domestic Passenger (incl. motorcycle)	Each	\$8
Light Truck/4WD	Each	\$15
Heavy Truck	Each	\$23
Super Single (wide)	Each	\$43
Tractor/Grader	Each	\$165
Rim attached additional charge per tyre	Each	\$23
Low Hazard Regulated Waste (Gatton only)	Unit	Cost
Hazardous Contaminated Soil; or Asbestos – <b>min charge \$50</b>	Tonne	\$185
	m <sup>3</sup>	\$75
Dead Animals (Gatton only – *refer to Types of Waste Accepted)	Unit	Cost
Small – cat, small dog	Each	\$16
Medium - goat, sheep, large dog etc	Each	\$28
Large – horse, cattle etc	Each	\$123
Recyclable Material	Unit	Cost
<u>Separated and Uncontaminated</u> – cardboard, glass, plastic, paper, metal, aluminium, steel, vehicle batteries, used motor oil, t-tape (clean and to Gatton only), concrete, drumMuster etc		FREE
Air Con Units, Fridges and/or Freezers	Each	\$10
Out-of-Region Resident	Unit	Cost
<u>Additional</u> charge	Each	\$30

# SITES

## Gatton Landfill/Transfer Station

Fords Road, Gatton  
(This site has a Weighbridge)

## Laidley Transfer Station

Burgess Road, Laidley Heights

## Withcott Transfer Station

Spa Water Road, Withcott

## Helidon Transfer Station

Seventeen Mile Road, Helidon

## Murphys Creek Transfer Station

Milora Road, Murphys Creek

## Grantham Transfer Station

Back Ma Ma Road, Grantham

## Lockrose Transfer Station

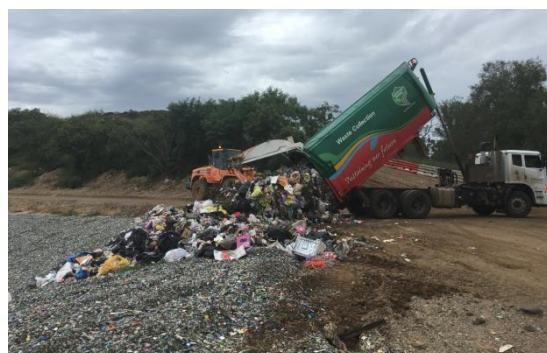
Village Road, Lockrose

## Lockyer Waters Transfer Station

Main Greenswamp Road, Lockyer Waters

## Waste Facility Contact Details

Phone: 1300 005 872



## LOCKYER VALLEY REGIONAL COUNCIL



## 2018/2019 TRANSFER STATION WASTE FEES COMMERCIAL & DOMESTIC

26 Railway Street, Gatton Qld 4343

Telephone: 1300 005 872

Fax: (07) 5462 3269

Email: [mailbox@lvrc.qld.gov.au](mailto:mailbox@lvrc.qld.gov.au)

*Recycling - it's up to you!*



*Don't let it go to Waste!*

COMMERCIAL (Gatton/Laidley/Withcott)		
General Waste	Unit	Cost
<120lt (½ a wheelie bin)	Each	\$14
Sedan, Station Wagon, SUV, >120lt (more than ½ wheelie bin)	Each	\$19
Ute or Trailer (max 6x4)	Each	\$34
Ute + Trailer (max 6x4)	Each	\$64
Larger Vehicles (trucks)	Tonne	\$115
	m³	\$50
Green Waste & Mulch	Unit	Cost
Uncontaminated - e.g. no steel, plastic, concrete, soil, building products, treated timber etc	Tonne	\$32
	Min	\$10
	m³	\$20
	Tonne	\$115
Contaminated – General Waste	m³	\$50
Ute or Trailer (max 6x4)	Each	\$15
Out-of-Region (includes additional charge)	Tonne	\$143
	m³	\$66
Concrete	Unit	Cost
Uncontaminated - e.g. no vegetation, timber, steel, plastic, contaminated soil, asbestos products etc	Tonne	\$71
	m³	\$170
Contaminated – General Waste	Tonne	\$115
	m³	\$276
Contaminated – Regulated Waste – min charge \$50	Tonne	\$185
	m³	\$444
Clean Fill/Soil	Unit	Cost
Uncontaminated – e.g. no vegetation, timber, steel, plastic, asbestos products, concrete > 300mm diameter, contaminated soil, stones, bricks etc		FREE
Contaminated - see General Waste or Regulated Waste		
Low Hazard Regulated Waste (Gatton only – *refer to Types of Waste Accepted)	Unit	Cost
Hazardous Contaminated Soil; or Asbestos – min charge \$50	Tonne	\$185
	m³	\$444
Recyclable Material	Unit	Cost
Commercially sourced not permitted		
Air Con Units, Fridges and/or Freezers	Each	\$10
T-Tape (Trickle Tape) - Gatton only	Unit	Cost
Uncontaminated – no excess soil etc		FREE
Contaminated – other plastics/soil etc	Tonne	\$115
	m³	\$50
Out-of-Region Waste	Unit	Cost
Additional charge	Tonne	\$115
	m³	\$50
Gas Cylinders and/or Tyres – Not Permitted		
"Unit" Defined & includes "or part thereof"		

## Types of Waste Accepted at Each Site

### Gatton Landfill/Transfer Station

**Accepted** - Domestic, Commercial or Industrial, Construction or Demolition, Asbestos\*, Green Waste, Scrap Metal, Concrete, drumMuster Containers, Recyclable Material, Dead Animals\*, Electronic Waste, Motor Oil, Agricultural Trickle Tape (T-tape), Tyres.

\*Asbestos and Dead Animals accepted 8am – 3pm

Mon-Fri only, prior approval required via 1300 005 872.

**Prohibited** - Hot Ash, Liquid Waste, Chemicals, Poisons, Unwashed Chemical Containers.

### Laidley Transfer Station

**Accepted** - Domestic, Commercial or Industrial, Construction or Demolition, Green Waste, Scrap Metal, Concrete, drumMuster Containers, Recyclable Material, Motor Oil, Electronic Waste.

**Prohibited** - Hot Ash, Liquid Waste, Chemicals, Poisons, Unwashed Chemical Containers, Dead Animals, Tyres, Asbestos.

### Withcott Transfer Station

**Accepted** - Domestic, Commercial or Industrial (restricted quantities – contact LVRC), Green Waste, Scrap Metal, Recyclable Material, Electronic Waste, Motor Oil.

**Prohibited** – Construction, Demolition, Hot Ash, Liquid Waste, Chemicals, Poisons, Unwashed Chemical Containers, drumMuster Containers, Dead Animals, Tyres, Asbestos.

### Grantham, Lockyer Waters Transfer Stations

**Accepted** - Domestic, Green Waste, Scrap Metal, Recyclable Material, drumMuster Containers, Electronic Waste, Motor Oil.

**Prohibited** - Tyres, Hot Ash, Liquid Waste, Chemicals, Poisons, Unwashed Chemical Containers, Dead Animals, Asbestos, Construction or Demolition, Commercial or Industrial.

### Lockrose, Helidon, Murphys Creek Transfer Stations

**Accepted** - Domestic, Green Waste, Scrap Metal, Recyclable Material, Electronic Waste, Motor Oil (not accepted at Lockrose Transfer Station).

**Prohibited** - Liquid Waste, drumMuster Containers, Chemicals, Poisons, Unwashed Chemical Containers, Dead Animals, Hot Ash, Asbestos, Construction and Demolition Waste, Commercial or Industrial, Tyres.

## ILLEGAL DUMPING

Illegal dumping is the unlawful deposit of waste. Illegal dumping includes items such as bags of rubbish and garden waste. It also includes larger scale dumping of building construction and demolition materials, household goods, abandoned cars and car parts, tyres and hazardous waste.

Illegal dumping is unsightly; it ruins the public image of the Lockyer Valley and damages the region's reputation. Illegal dumping costs Queenslanders millions of dollars a year in clean up costs, degrades the local environment and reduces property values.

Illegal dump sites not only attract further dumping, but also other illegal activities and antisocial behaviour— decreasing community pride and intensifying the problem.

### What are some of the worst impacts?

- Degradation of land, including degrading plant and animal habitats;
- Runoff from dump sites may contaminate soil and water sources;
- Dumped items can alter the normal drainage course of runoff and make areas more susceptible to flooding and erosion;
- Dumped items pose physical and chemical hazards;
- Dumped materials could catch fire either by spontaneous combustion or arson; and
- Dumped items cost money to be removed – your rates are paying for other people's rubbish removal.

### What Will Council Do If You Dump Illegally?

Council officers will utilise the following options for tackling illegal dumping:

- Investigate and prosecute illegal dumpers.
- Identify and record the location of illegal dumping "hot spots".
- Regularly patrol "hot spots".
- Install video surveillance cameras where suitable.

*Council will NOT tolerate illegal dumping in our region.*

**Illegal Dumping...Report it!**  
**1300 005 872**

