

# Koalas live in our backyards

Koalas are widely distributed across the Lockyer Valley region. Throughout South East Queensland, koalas face a high risk of extinction in the wild.

## What do I do if I see a koala?



1. Restrain and keep pets away from the koala. If your neighbours have pets, notify them about the koala and ask them to restrain their pets also.

2. Observe at a distance to determine whether it shows any signs of sickness or injury.

3. If it seems healthy, keep your dog restrained and check on it again later. It will likely move on to another tree in its home range.

4. If it does show signs of sickness or injury, contact **1300 ANIMAL (1300 264 625)**.

### Signs of sickness or injuries include:

- A wet and dirty bottom
- Infected or inflamed eyes
- Malnourished
- Sitting at the base of a tree
- Signs of injury – blood, not using all four limbs when climbing or walking
- Staying in one tree for more than a couple of days



## How can I help koalas?

1. When driving at dusk or dawn, slow down and watch out for koalas on the move, especially during breeding season from July to January.

2. Keep your dog confined inside or in a kennel at night.

3. Always walk your dog on a leash.

4. Support wildlife carers in your region.

5. Create a koala-friendly backyard.

6. If you have room, plant koala-friendly trees in your backyard.

7. Report koala sightings and photos to iNaturalist.

8. Register your interest below to learn how to train your dog to avoid wildlife through the “Leave It” program.



To see how Council is helping koalas in the Lockyer Valley region, visit [www.lockyervalley.qld.gov.au/wildlife](http://www.lockyervalley.qld.gov.au/wildlife)



REGIONAL COUNCIL

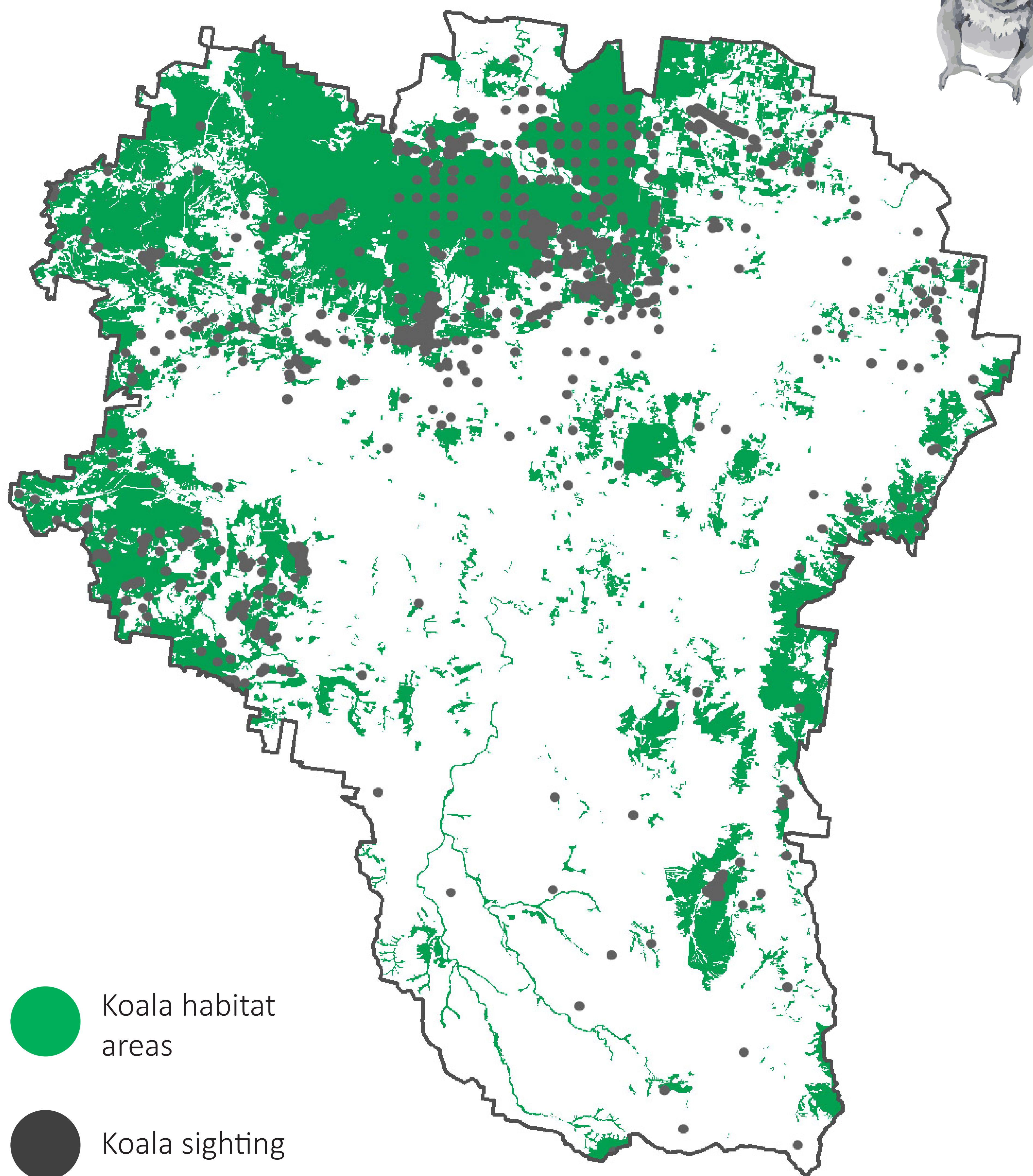


# THERE ARE *Koalas living in our backyard* IN THE LOCKYER VALLEY

Throughout South East Queensland, koalas are listed as endangered under both State and Federal legislation. Their populations are in severe decline due to habitat loss, disease, dog attacks and vehicle strikes.

In the Lockyer Valley, koalas live in remnant eucalypt forests protected by Conservation Parks right through to home range trees in urban backyards. During breeding season, between July and January, koalas are most at risk as they spend more time moving around the ground in search of mates. This means they have a higher chance of being injured by cars and dogs.

Contact **1300 ANIMAL** if you see a sick or injured koala and report any sightings to iNaturalist.



Data sources: Koala habitat areas (Department of Environment and Science, koala habitat areas v3.0, 07/09/2022) and koala records (Department of Environment and Science, WildNet wildlife records 19/11/2022)



To see what Council is doing and what you can do to help koalas, visit [www.lockyervalley.qld.gov.au/wildlife](http://www.lockyervalley.qld.gov.au/wildlife)



REGIONAL COUNCIL