



# Lockyer Valley Regional Council Draft Planning Scheme

REGIONAL COUNCIL

## OM14 Minimum Lot Size Overlay map

### Low density residential zone precincts

- Suburban (600m<sup>2</sup>)
- Half acre (2,000m<sup>2</sup>)
- Acreage (3,000m<sup>2</sup>)

### Rural residential zone precincts

- Park (5,000m<sup>2</sup>)
- Recreation (10,000m<sup>2</sup> or 1ha)
- Landscape (25,000m<sup>2</sup> or 2.5ha)
- Homestead (40,000m<sup>2</sup> or 4ha)
- No further subdivision

### Other Features

- Major Road
- Railway Network
- Property Boundary
- Local Government Boundary
- Watercourse or Waterbody

### NOTE

Refer to online or electronic mapping where layers overlap or labels obstruct the data on the map.

### MAP INFORMATION

Based on or contains data sourced from the State Government which gives no warranty in relation to the data (including accuracy, reliability, completeness or suitability) and accepts no liability (including without limitation, liability in negligence) for any loss, damage or costs (including consequential damage) relating to any use of the data.  
© Copyright Lockyer Valley Regional Council 2023

### DATA SOURCES

Cadastral data weekly - whole of State Queensland, Rail network - Queensland, Baseline roads and tracks - Queensland; © State of Queensland (Department of Resources) 2023

Gazettal Date: 00/00/0000

Geocentric Datum of Australia (GDA2020 / MGA zone 56)

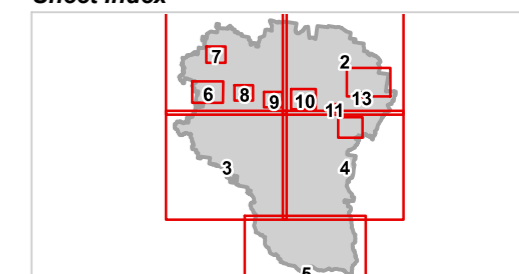
Date: 30/8/2023

Approx Scale @ A3: 1:250,000

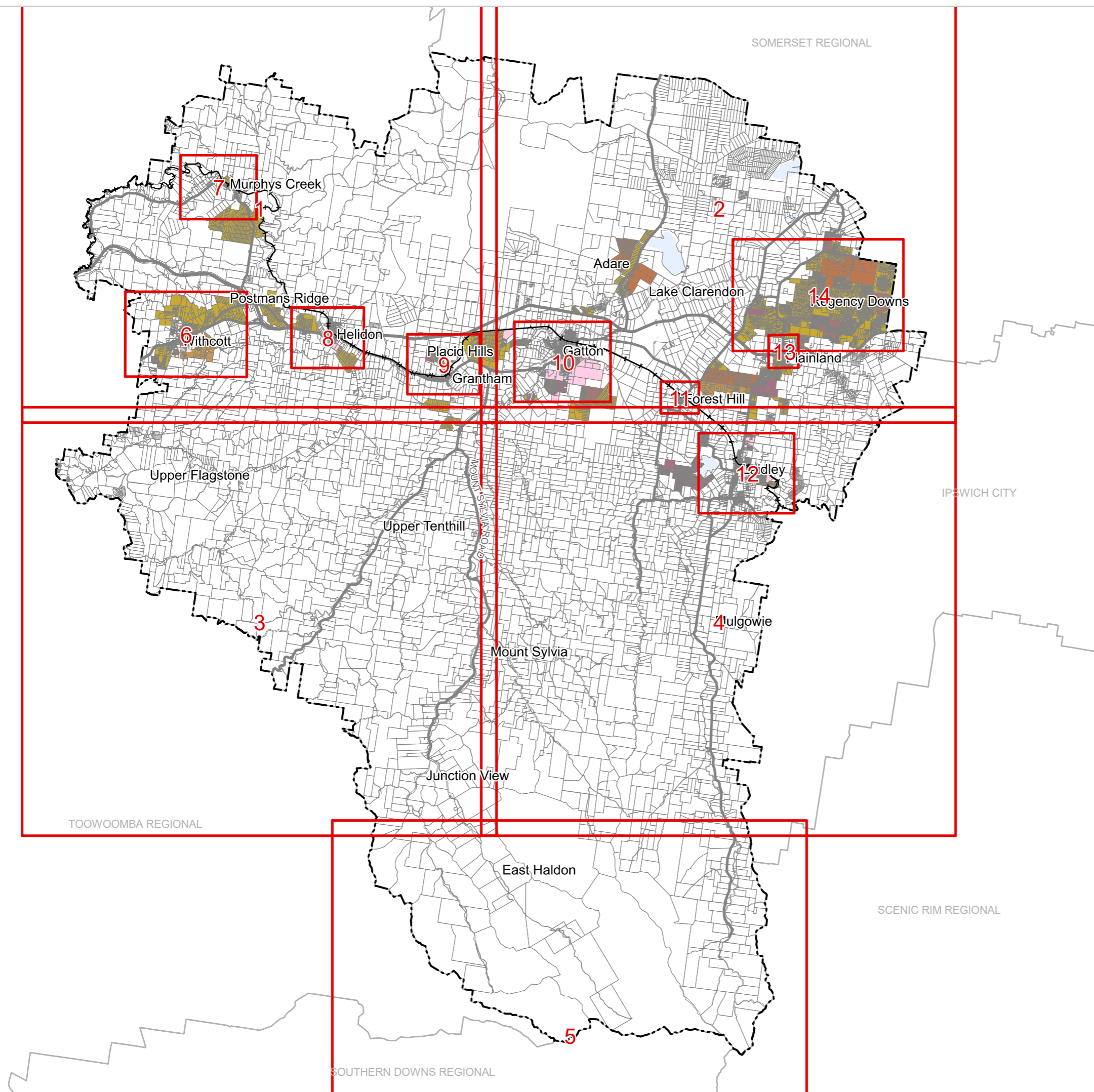


kilometres

### Sheet Index



OM14 Minimum Lot Size Overlay  
Local government area-00





# Lockyer Valley Regional Council Draft Planning Scheme

REGIONAL COUNCIL

## OM14 Minimum Lot Size Overlay map

### Low density residential zone precincts

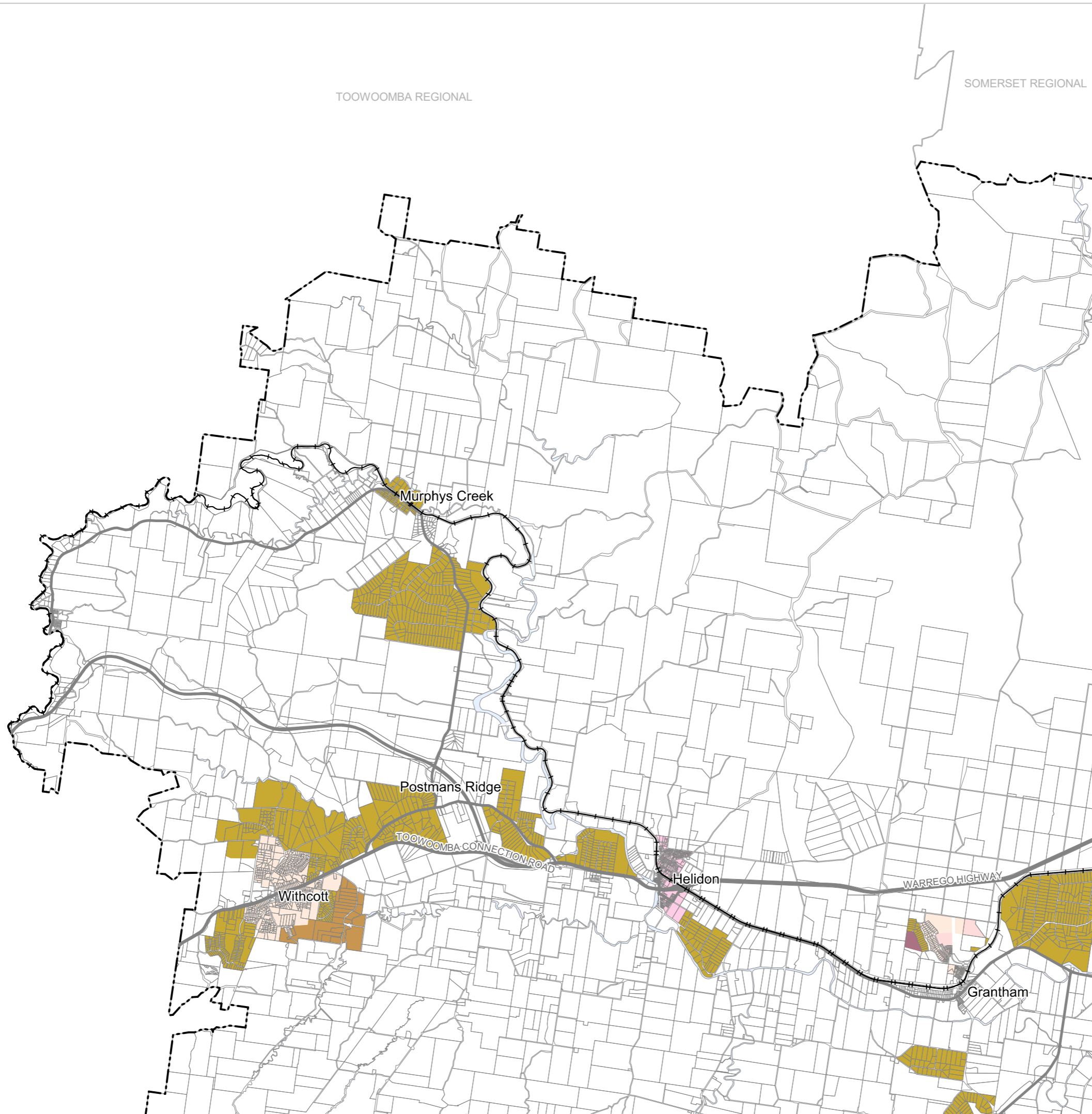
- Suburban (600m<sup>2</sup>)
- Half acre (2,000m<sup>2</sup>)
- Acreage (3,000m<sup>2</sup>)

### Rural residential zone precincts

- Park (5,000m<sup>2</sup>)
- Recreation (10,000m<sup>2</sup> or 1ha)
- Landscape (25,000m<sup>2</sup> or 2.5ha)
- Homestead (40,000m<sup>2</sup> or 4ha)
- No further subdivision

### Other Features

- Major Road
- Railway Network
- Property Boundary
- Local Government Boundary
- Watercourse or Waterbody



### NOTE

Refer to online or electronic mapping where layers overlap or labels obstruct the data on the map.

### MAP INFORMATION

Based on or contains data sourced from the State Government which gives no warranty in relation to the data (including accuracy, reliability, completeness or suitability) and accepts no liability (including without limitation, liability in negligence) for any loss, damage or costs (including consequential damage) relating to any use of the data.  
© Copyright Lockyer Valley Regional Council 2023

### DATA SOURCES

Cadastral data weekly - whole of State Queensland, Rail network - Queensland, Baseline roads and tracks - Queensland © State of Queensland (Department of Resources) 2023

Gazettal Date: 00/00/0000

Geocentric Datum of Australia (GDA2020 / MGA zone 56)

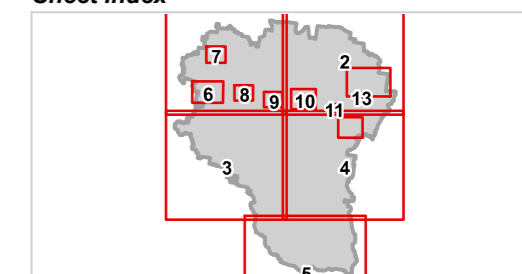


Date: 30/8/2023

Approx Scale @ A3: 1:100,000



### Sheet Index



**OM14 Minimum Lot Size Overlay  
LGA north-west-01**

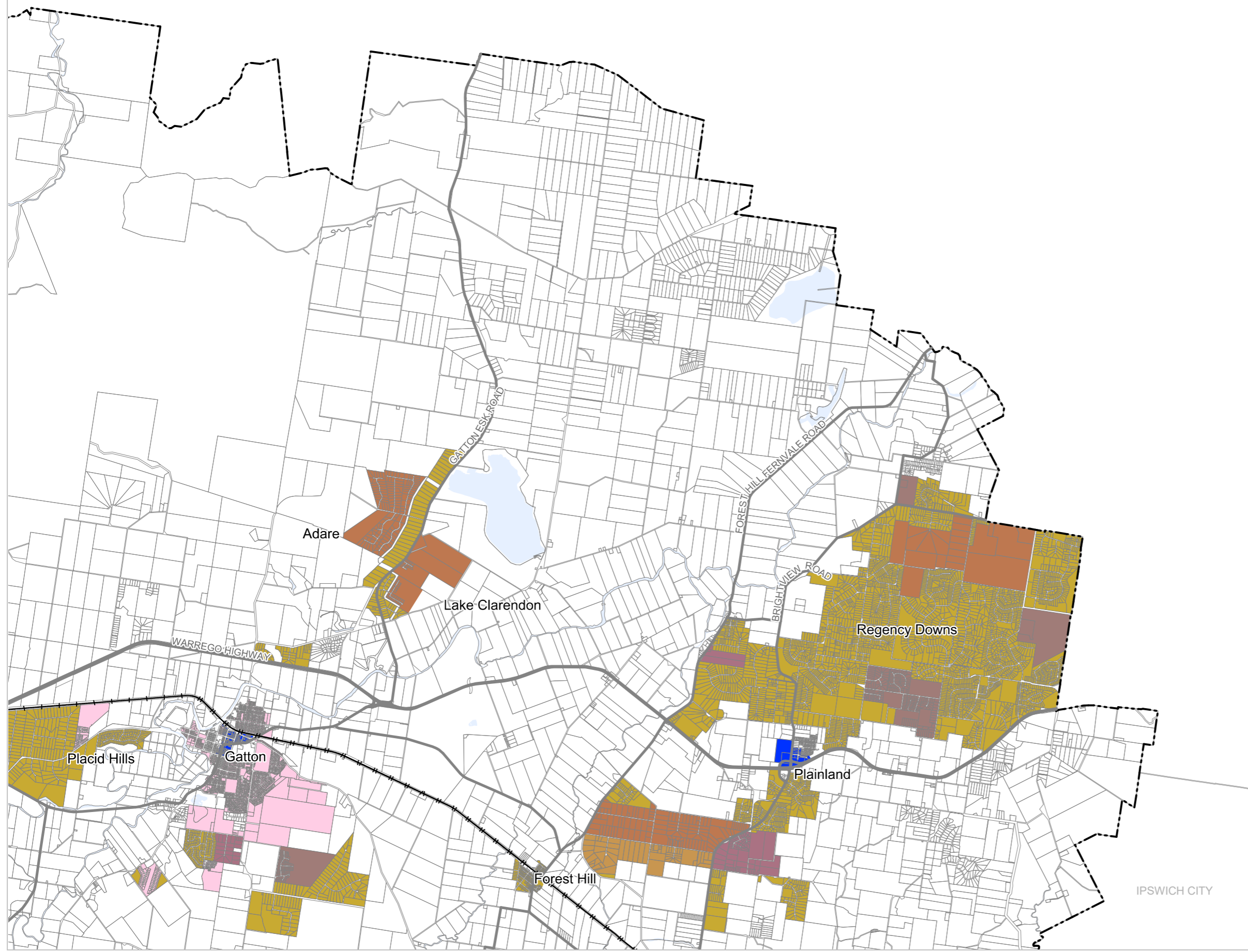


# Lockyer Valley Regional Council Draft Planning Scheme

REGIONAL COUNCIL

## OM14 Minimum Lot Size Overlay map

SOMERSET REGIONAL



### Low density residential zone precincts

- Suburban (600m<sup>2</sup>)
- Half acre (2,000m<sup>2</sup>)
- Acreage (3,000m<sup>2</sup>)

### Rural residential zone precincts

- Park (5,000m<sup>2</sup>)
- Recreation (10,000m<sup>2</sup> or 1ha)
- Landscape (25,000m<sup>2</sup> or 2.5ha)
- Homestead (40,000m<sup>2</sup> or 4ha)
- No further subdivision

### Other Features

- Major Road
- Railway Network
- Property Boundary
- Local Government Boundary
- Watercourse or Waterbody

### NOTE

Refer to online or electronic mapping where layers overlap or labels obstruct the data on the map.

### MAP INFORMATION

Based on or contains data sourced from the State Government which gives no warranty in relation to the data (including accuracy, reliability, completeness or suitability) and accepts no liability (including without limitation, liability in negligence) for any loss, damage or costs (including consequential damage) relating to any use of the data.  
© Copyright Lockyer Valley Regional Council 2023

### DATA SOURCES

Cadastral data weekly - whole of State Queensland, Rail network - Queensland, Baseline roads and tracks - Queensland: © State of Queensland (Department of Resources) 2023

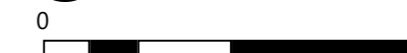
Gazettal Date: 00/00/0000

Geocentric Datum of Australia (GDA2020 / MGA zone 56)

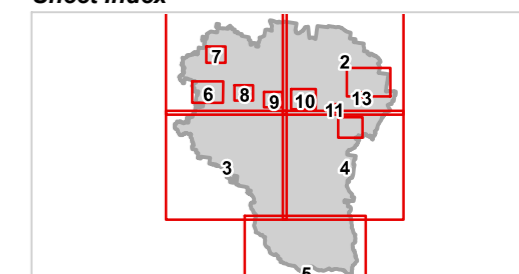


Date: 30/8/2023

Approx Scale @ A3: 1:100,000



### Sheet Index



OM14 Minimum Lot Size Overlay  
LGA north-east-02

IPSWICH CITY



# Lockyer Valley Regional Council Draft Planning Scheme

REGIONAL COUNCIL

## OM14 Minimum Lot Size Overlay map

### Low density residential zone precincts

- Suburban (600m<sup>2</sup>)
- Half acre (2,000m<sup>2</sup>)
- Acreage (3,000m<sup>2</sup>)

### Rural residential zone precincts

- Park (5,000m<sup>2</sup>)
- Recreation (10,000m<sup>2</sup> or 1ha)
- Landscape (25,000m<sup>2</sup> or 2.5ha)
- Homestead (40,000m<sup>2</sup> or 4ha)
- No further subdivision

### Other Features

- Major Road
- Railway Network
- Property Boundary
- Local Government Boundary
- Watercourse or Waterbody

### NOTE

Refer to online or electronic mapping where layers overlap or labels obstruct the data on the map.

### MAP INFORMATION

Based on or contains data sourced from the State Government which gives no warranty in relation to the data (including accuracy, reliability, completeness or suitability) and accepts no liability (including without limitation, liability in negligence) for any loss, damage or costs (including consequential damage) relating to any use of the data.  
© Copyright Lockyer Valley Regional Council 2023

### DATA SOURCES

Cadastral data weekly - whole of State Queensland, Rail network - Queensland, Baseline roads and tracks - Queensland; © State of Queensland (Department of Resources) 2023

Gazettal Date: 00/00/0000

Geocentric Datum of Australia (GDA2020 / MGA zone 56)

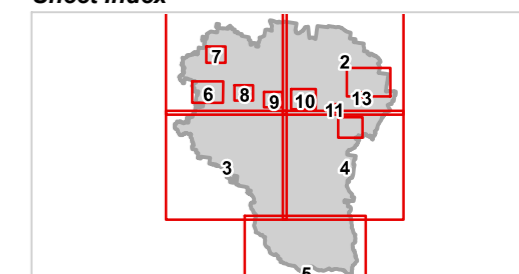


Date: 30/8/2023

Approx Scale @ A3: 1:100,000



### Sheet Index



**OM14 Minimum Lot Size Overlay  
LGA south-west-03**








# Lockyer Valley Regional Council Draft Planning Scheme






REGIONAL COUNCIL

## OM14 Minimum Lot Size Overlay map


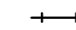



### Low density residential zone precincts

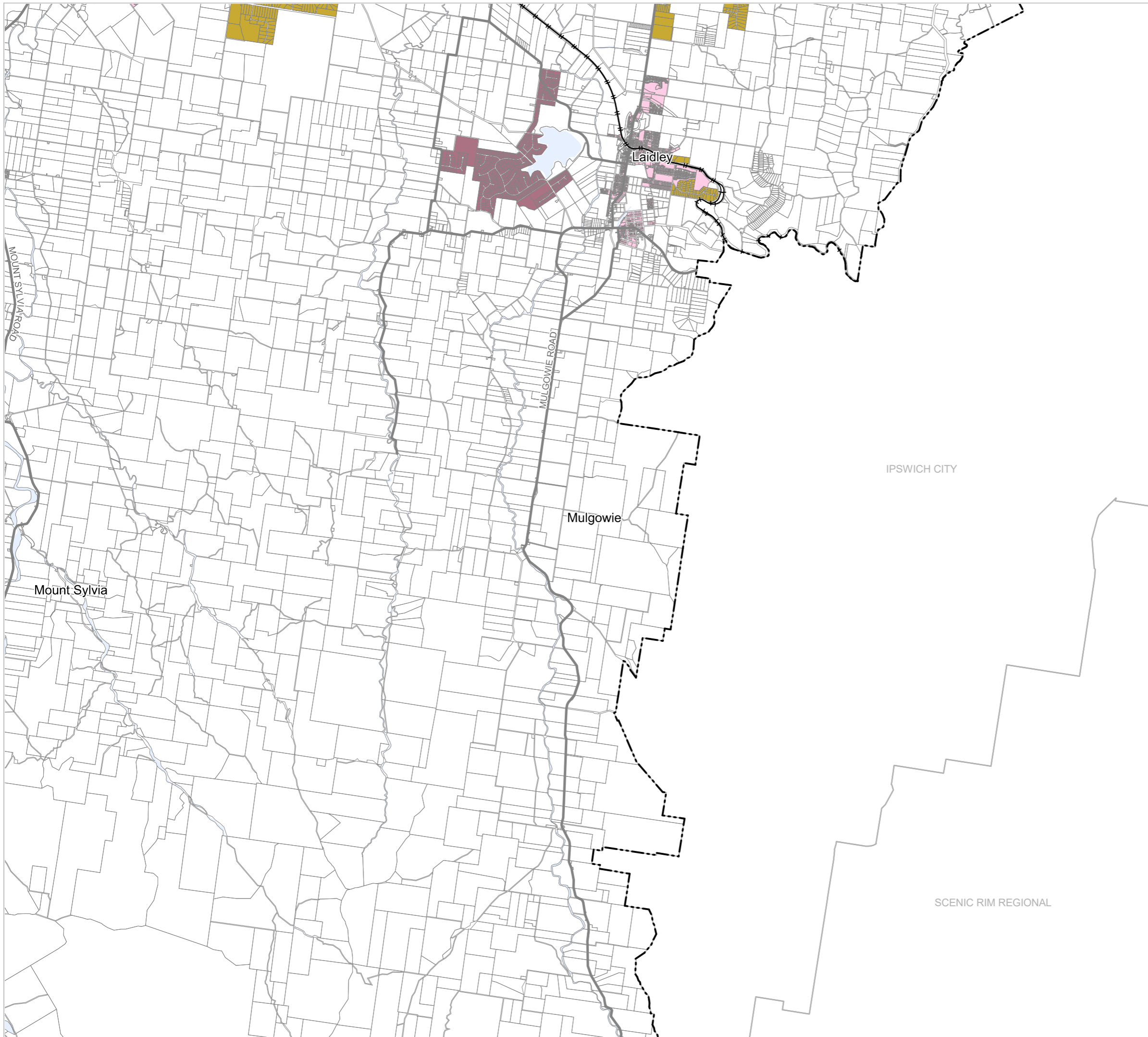
-  Suburban (600m<sup>2</sup>)
-  Half acre (2,000m<sup>2</sup>)
-  Acreage (3,000m<sup>2</sup>)

### Rural residential zone precincts

-  Park (5,000m<sup>2</sup>)
-  Recreation (10,000m<sup>2</sup> or 1ha)
-  Landscape (25,000m<sup>2</sup> or 2.5ha)
-  Homestead (40,000m<sup>2</sup> or 4ha)
-  No further subdivision

### Other Features

-  Major Road
-  Railway Network
-  Property Boundary
-  Local Government Boundary
-  Watercourse or Waterbody



### NOTE

Refer to online or electronic mapping where layers overlap or labels obstruct the data on the map.

### MAP INFORMATION

Based on or contains data sourced from the State Government which gives no warranty in relation to the data (including accuracy, reliability, completeness or suitability) and accepts no liability (including without limitation, liability in negligence) for any loss, damage or costs (including consequential damage) relating to any use of the data.  
© Copyright Lockyer Valley Regional Council 2023

### DATA SOURCES

Cadastral data weekly - whole of State Queensland, Rail network - Queensland, Baseline roads and tracks - Queensland: © State of Queensland (Department of Resources) 2023

Gazettal Date: 00/00/0000

Geocentric Datum of Australia (GDA2020 / MGA zone 56)

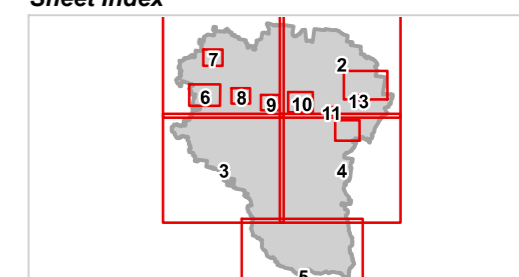


Date: 30/8/2023

Approx Scale @ A3: 1:100,000



### Sheet Index



**OM14 Minimum Lot Size Overlay  
LGA south-east-04**



# Lockyer Valley Regional Council Draft Planning Scheme

REGIONAL COUNCIL

## OM14 Minimum Lot Size Overlay map

### Low density residential zone precincts

- Suburban (600m<sup>2</sup>)
- Half acre (2,000m<sup>2</sup>)
- Acreage (3,000m<sup>2</sup>)

### Rural residential zone precincts

- Park (5,000m<sup>2</sup>)
- Recreation (10,000m<sup>2</sup> or 1ha)
- Landscape (25,000m<sup>2</sup> or 2.5ha)
- Homestead (40,000m<sup>2</sup> or 4ha)
- No further subdivision

### Other Features

- Major Road
- Railway Network
- Property Boundary
- Local Government Boundary
- Watercourse or Waterbody



### NOTE

Refer to online or electronic mapping where layers overlap or labels obstruct the data on the map.

### MAP INFORMATION

Based on or contains data sourced from the State Government which gives no warranty in relation to the data (including accuracy, reliability, completeness or suitability) and accepts no liability (including without limitation, liability in negligence) for any loss, damage or costs (including consequential damage) relating to any use of the data.  
© Copyright Lockyer Valley Regional Council 2023

### DATA SOURCES

Cadastral data weekly - whole of State Queensland, Rail network - Queensland, Baseline roads and tracks - Queensland: © State of Queensland (Department of Resources) 2023

Gazettal Date: 00/00/0000

Geocentric Datum of Australia (GDA2020 / MGA zone 56)

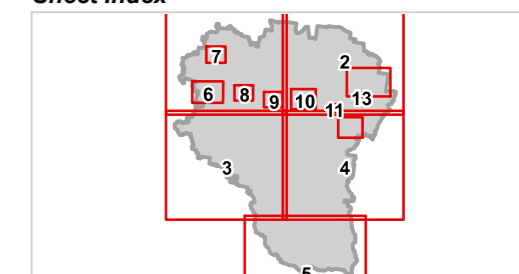


Date: 30/8/2023

Approx Scale @ A3: 1:100,000



### Sheet Index



**OM14 Minimum Lot Size Overlay  
LGA south-05**






# Lockyer Valley Regional Council Draft Planning Scheme






REGIONAL COUNCIL

## OM14 Minimum Lot Size Overlay map


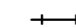



### Low density residential zone precincts

-  Suburban (600m<sup>2</sup>)
-  Half acre (2,000m<sup>2</sup>)
-  Acreage (3,000m<sup>2</sup>)

### Rural residential zone precincts

-  Park (5,000m<sup>2</sup>)
-  Recreation (10,000m<sup>2</sup> or 1ha)
-  Landscape (25,000m<sup>2</sup> or 2.5ha)
-  Homestead (40,000m<sup>2</sup> or 4ha)
-  No further subdivision

### Other Features

-  Major Road
-  Railway Network
-  Property Boundary
-  Local Government Boundary
-  Watercourse or Waterbody

### NOTE

Refer to online or electronic mapping where layers overlap or labels obstruct the data on the map.

### MAP INFORMATION

Based on or contains data sourced from the State Government which gives no warranty in relation to the data (including accuracy, reliability, completeness or suitability) and accepts no liability (including without limitation, liability in negligence) for any loss, damage or costs (including consequential damage) relating to any use of the data.  
© Copyright Lockyer Valley Regional Council 2023

### DATA SOURCES

Cadastral data weekly - whole of State Queensland, Rail network - Queensland, Baseline roads and tracks - Queensland © State of Queensland (Department of Resources) 2023

Gazettal Date: 00/00/0000

Geocentric Datum of Australia (GDA2020 / MGA zone 56)



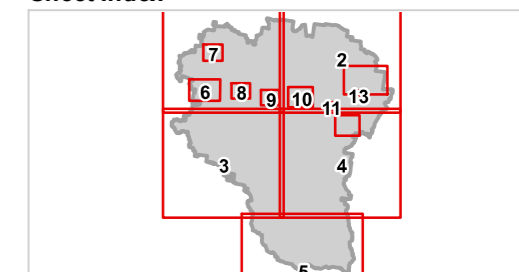
Date: 30/8/2023

Approx Scale @ A3: 1:20,000

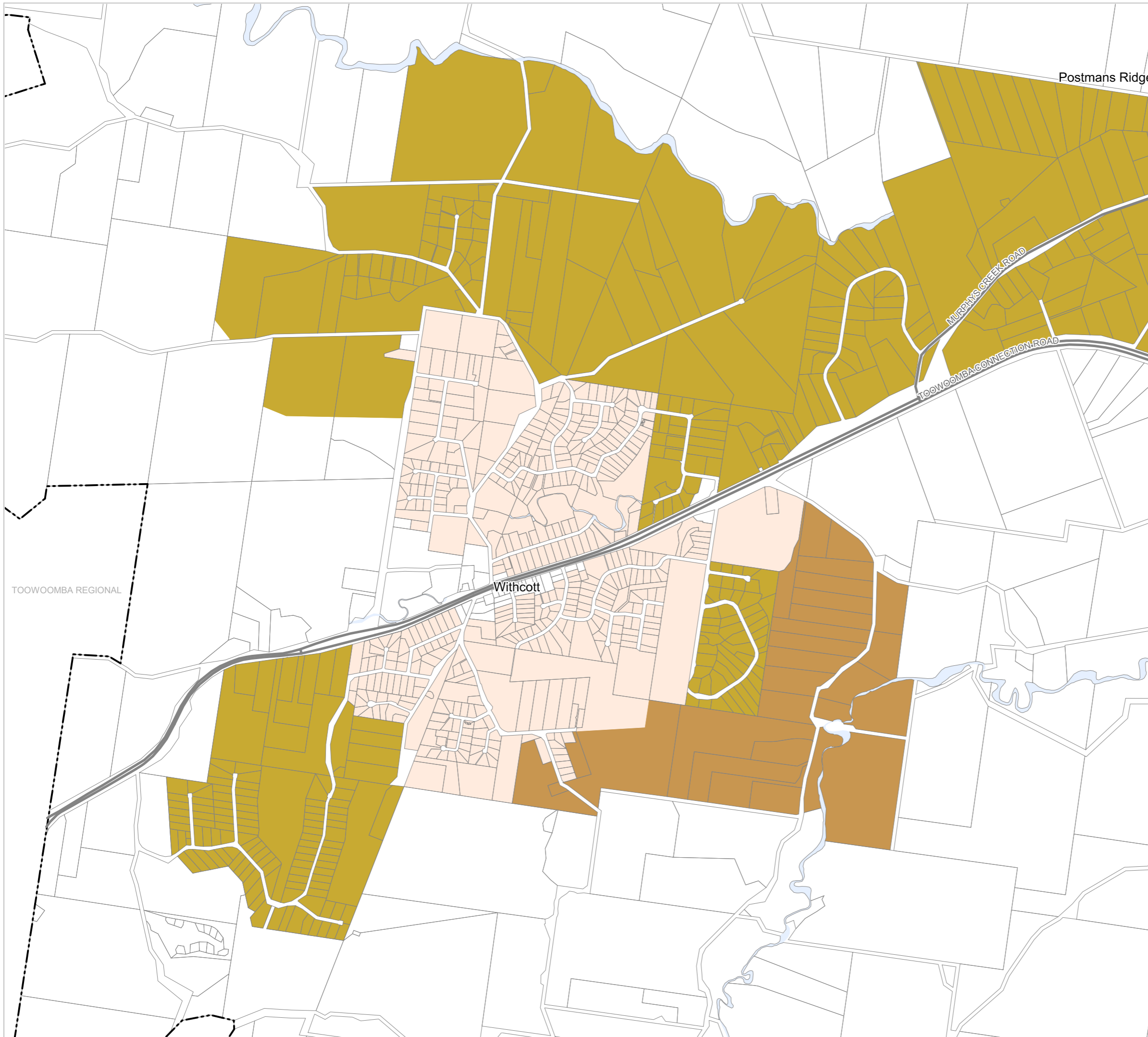


kilometres

### Sheet Index



**OM14 Minimum Lot Size Overlay  
Withcott-06**



TOOWOOMBA REGIONAL

Withcott

Postmans Ridge

MURPHYS CREEK ROAD

TOOWOOMBA CONNECTION ROAD



# Lockyer Valley Regional Council Draft Planning Scheme

REGIONAL COUNCIL

## OM14 Minimum Lot Size Overlay map

### Low density residential zone precincts

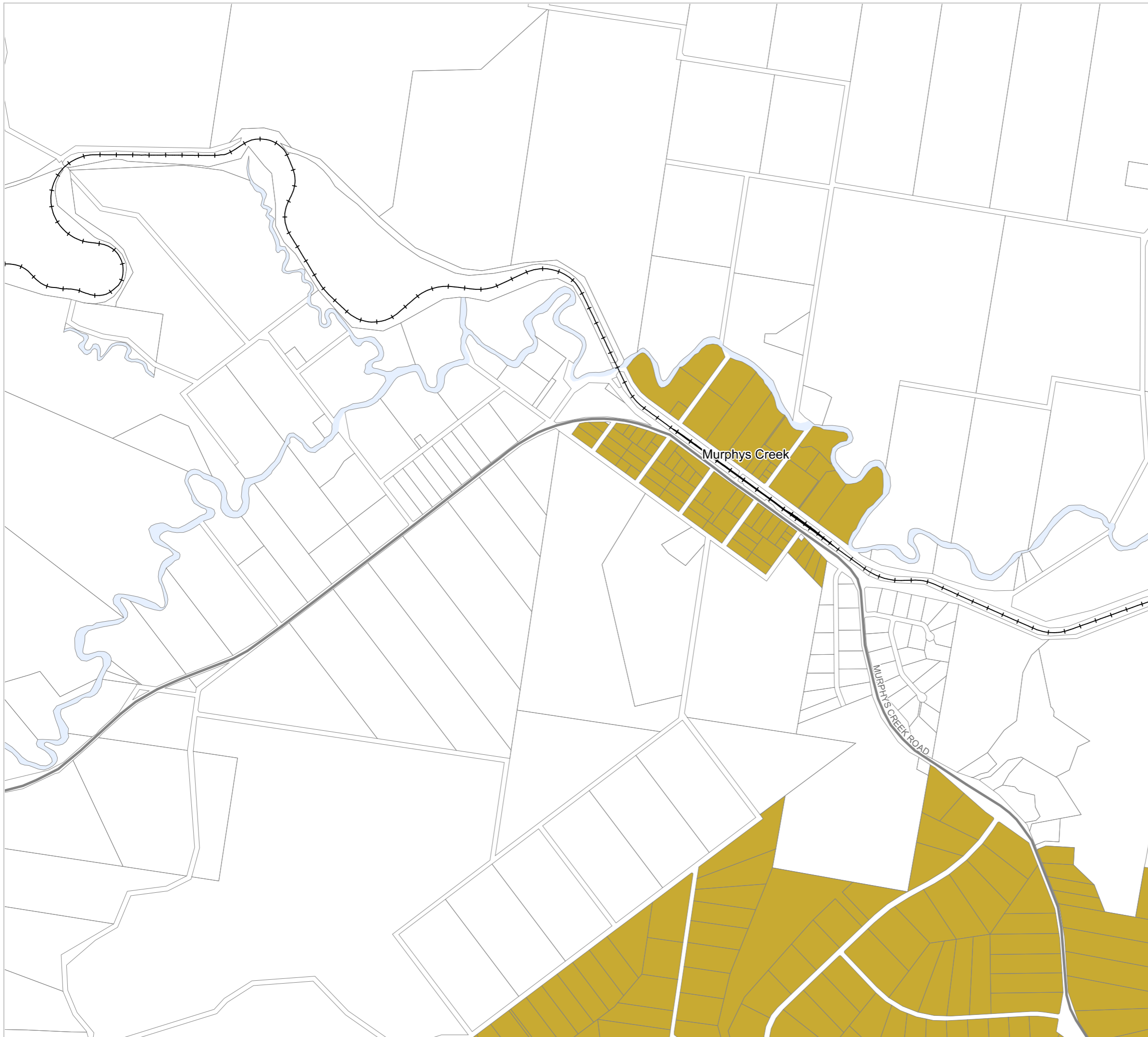
- Suburban (600m<sup>2</sup>)
- Half acre (2,000m<sup>2</sup>)
- Acreage (3,000m<sup>2</sup>)

### Rural residential zone precincts

- Park (5,000m<sup>2</sup>)
- Recreation (10,000m<sup>2</sup> or 1ha)
- Landscape (25,000m<sup>2</sup> or 2.5ha)
- Homestead (40,000m<sup>2</sup> or 4ha)
- No further subdivision

### Other Features

- Major Road
- Railway Network
- Property Boundary
- Local Government Boundary
- Watercourse or Waterbody



### NOTE

Refer to online or electronic mapping where layers overlap or labels obstruct the data on the map.

### MAP INFORMATION

Based on or contains data sourced from the State Government which gives no warranty in relation to the data (including accuracy, reliability, completeness or suitability) and accepts no liability (including without limitation, liability in negligence) for any loss, damage or costs (including consequential damage) relating to any use of the data.  
© Copyright Lockyer Valley Regional Council 2023

### DATA SOURCES

Cadastral data weekly - whole of State Queensland, Rail network - Queensland, Baseline roads and tracks - Queensland: © State of Queensland (Department of Resources) 2023

Gazettal Date: 00/00/0000

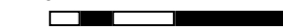
Geocentric Datum of Australia (GDA2020 / MGA zone 56)



Date: 30/8/2023

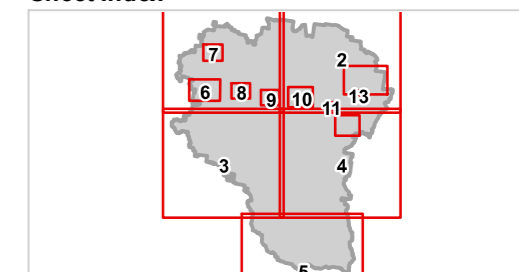
Approx Scale @ A3: 1:15,000

0 0.5



kilometres

### Sheet Index



**OM14 Minimum Lot Size Overlay  
Murphys Creek-07**





# Lockyer Valley Regional Council Draft Planning Scheme

REGIONAL COUNCIL

## OM14 Minimum Lot Size Overlay map

### Low density residential zone precincts

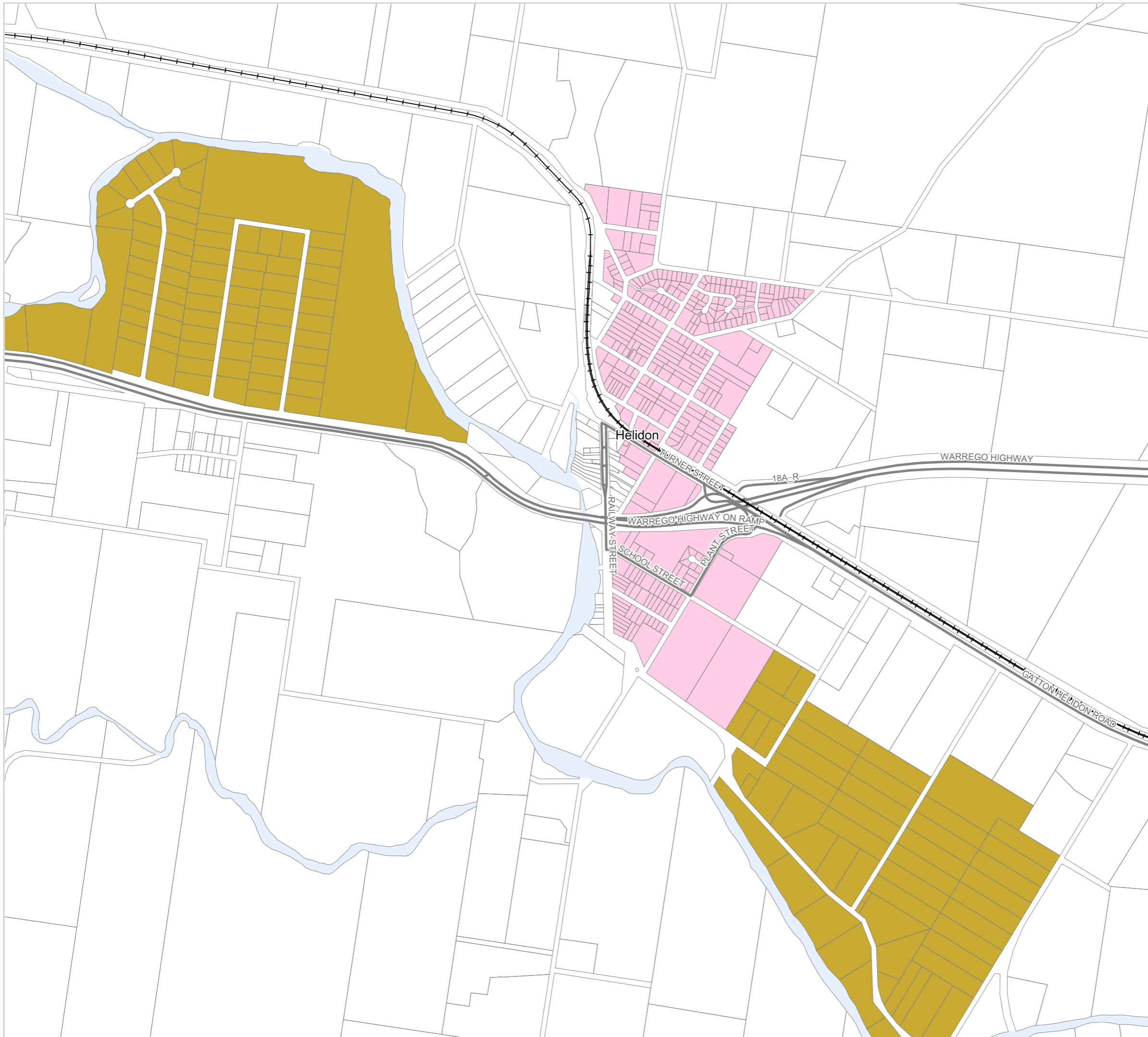
- Suburban (600m<sup>2</sup>)
- Half acre (2,000m<sup>2</sup>)
- Acreage (3,000m<sup>2</sup>)

### Rural residential zone precincts

- Park (5,000m<sup>2</sup>)
- Recreation (10,000m<sup>2</sup> or 1ha)
- Landscape (25,000m<sup>2</sup> or 2.5ha)
- Homestead (40,000m<sup>2</sup> or 4ha)
- No further subdivision

### Other Features

- Major Road
- Railway Network
- Property Boundary
- Local Government Boundary
- Watercourse or Waterbody



### NOTE

Refer to online or electronic mapping where layers overlap or labels obstruct the data on the map.

### MAP INFORMATION

Based on or contains data sourced from the State Government which gives no warranty in relation to the data (including accuracy, reliability, completeness or suitability) and accepts no liability (including without limitation, liability in negligence) for any loss, damage or costs (including consequential damage) relating to any use of the data.  
© Copyright Lockyer Valley Regional Council 2023

### DATA SOURCES

Cadastral data weekly - whole of State Queensland, Rail network - Queensland, Baseline roads and tracks - Queensland; © State of Queensland (Department of Resources) 2023

Gazettal Date: 00/00/0000

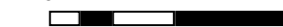
Geocentric Datum of Australia (GDA2020 / MGA zone 56)



Date: 30/8/2023

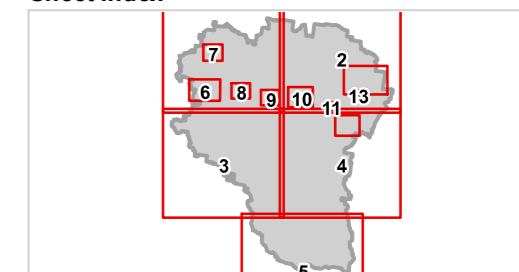
Approx Scale @ A3: 1:15,000

0 0.5



kilometres

### Sheet Index



**OM14 Minimum Lot Size Overlay  
Helidon-08**



# Lockyer Valley Regional Council Draft Planning Scheme

REGIONAL COUNCIL

## OM14 Minimum Lot Size Overlay map

### Low density residential zone precincts

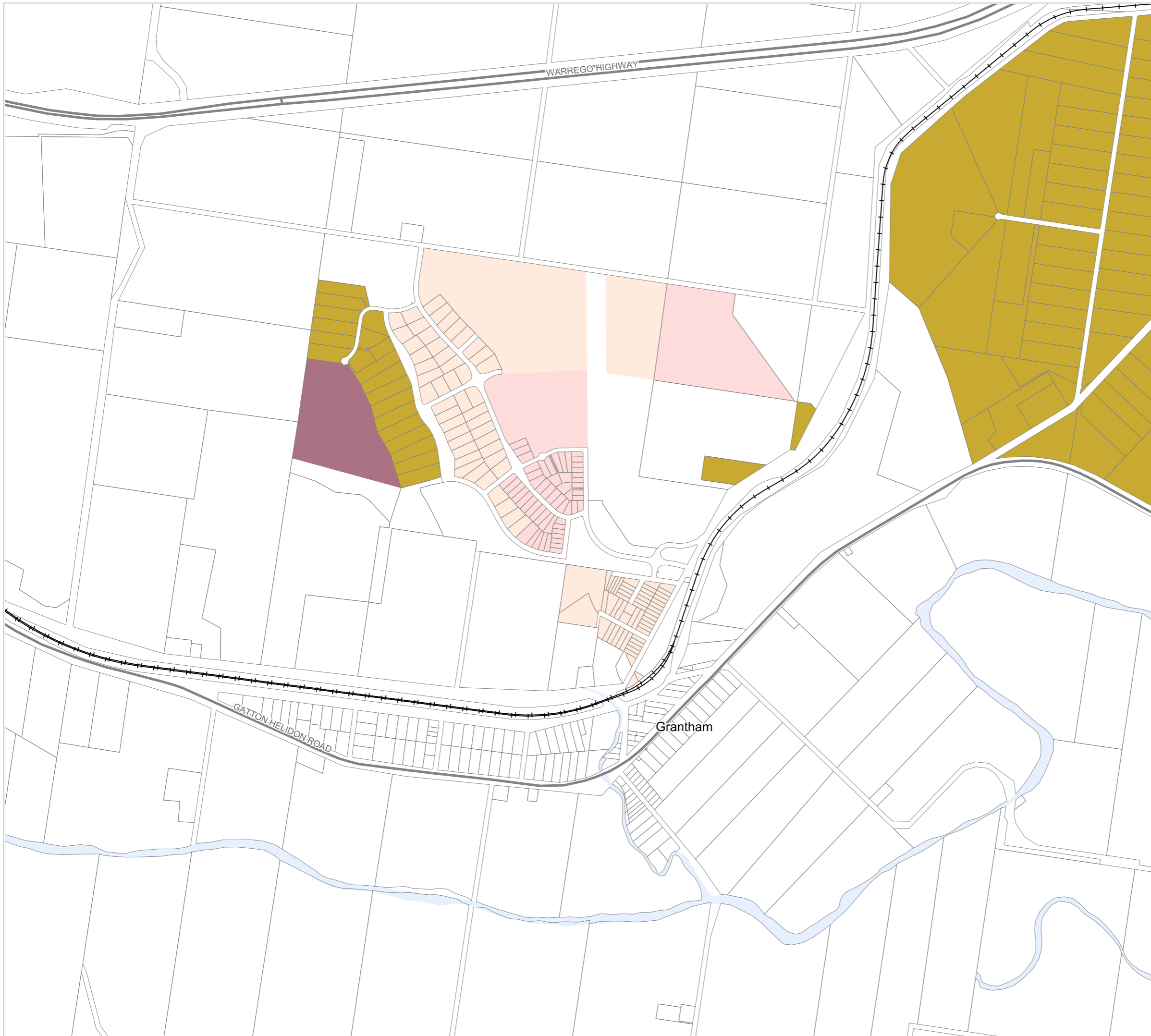
- Suburban (600m<sup>2</sup>)
- Half acre (2,000m<sup>2</sup>)
- Acreage (3,000m<sup>2</sup>)

### Rural residential zone precincts

- Park (5,000m<sup>2</sup>)
- Recreation (10,000m<sup>2</sup> or 1ha)
- Landscape (25,000m<sup>2</sup> or 2.5ha)
- Homestead (40,000m<sup>2</sup> or 4ha)
- No further subdivision

### Other Features

- Major Road
- Railway Network
- Property Boundary
- Local Government Boundary
- Watercourse or Waterbody



### NOTE

Refer to online or electronic mapping where layers overlap or labels obstruct the data on the map.

### MAP INFORMATION

Based on or contains data sourced from the State Government which gives no warranty in relation to the data (including accuracy, reliability, completeness or suitability) and accepts no liability (including without limitation, liability in negligence) for any loss, damage or costs (including consequential damage) relating to any use of the data.  
© Copyright Lockyer Valley Regional Council 2023

### DATA SOURCES

Cadastral data weekly - whole of State Queensland, Rail network - Queensland, Baseline roads and tracks - Queensland © State of Queensland (Department of Resources) 2023

Gazettal Date: 00/00/0000

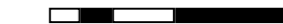
Geocentric Datum of Australia (GDA2020 / MGA zone 56)



Date: 30/8/2023

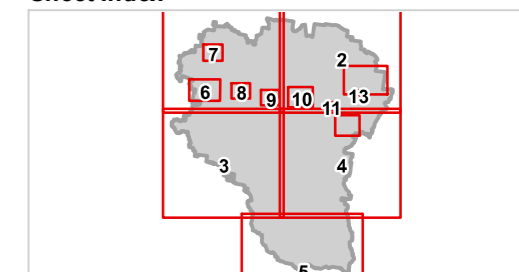
Approx Scale @ A3: 1:15,000

0 0.5



kilometres

### Sheet Index



**OM14 Minimum Lot Size Overlay  
Grantham-09**



# Lockyer Valley Regional Council Draft Planning Scheme

REGIONAL COUNCIL

## OM14 Minimum Lot Size Overlay map

### Low density residential zone precincts

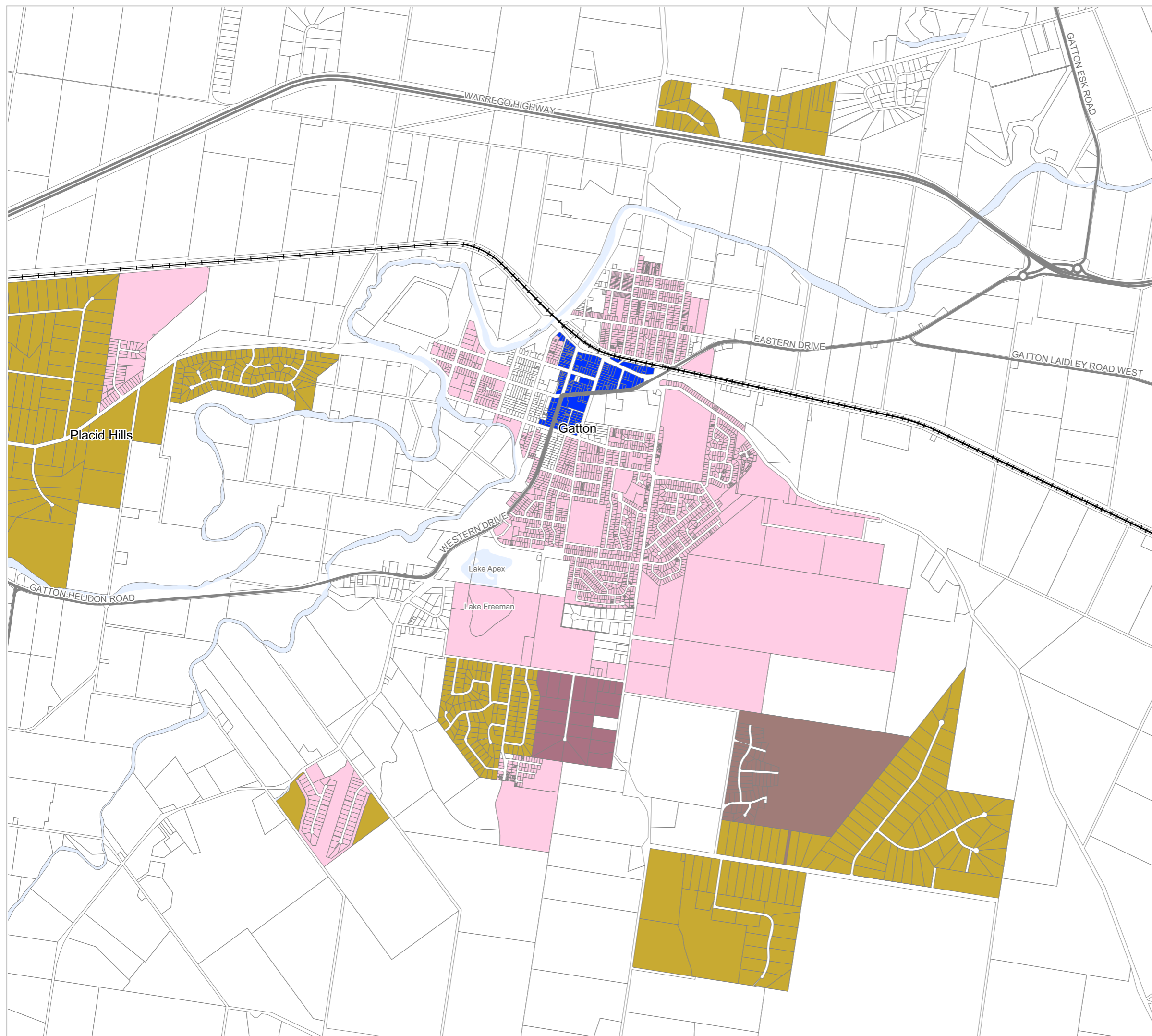
- Suburban (600m<sup>2</sup>)
- Half acre (2,000m<sup>2</sup>)
- Acreage (3,000m<sup>2</sup>)

### Rural residential zone precincts

- Park (5,000m<sup>2</sup>)
- Recreation (10,000m<sup>2</sup> or 1ha)
- Landscape (25,000m<sup>2</sup> or 2.5ha)
- Homestead (40,000m<sup>2</sup> or 4ha)
- No further subdivision

### Other Features

- Major Road
- Railway Network
- Property Boundary
- Local Government Boundary
- Watercourse or Waterbody



### NOTE

Refer to online or electronic mapping where layers overlap or labels obstruct the data on the map.

### MAP INFORMATION

Based on or contains data sourced from the State Government which gives no warranty in relation to the data (including accuracy, reliability, completeness or suitability) and accepts no liability (including without limitation, liability in negligence) for any loss, damage or costs (including consequential damage) relating to any use of the data.  
© Copyright Lockyer Valley Regional Council 2023

### DATA SOURCES

Cadastral data weekly - whole of State Queensland, Rail network - Queensland, Baseline roads and tracks - Queensland: © State of Queensland (Department of Resources) 2023

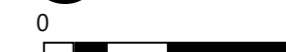
Gazettal Date: 00/00/0000

Geocentric Datum of Australia (GDA2020 / MGA zone 56)



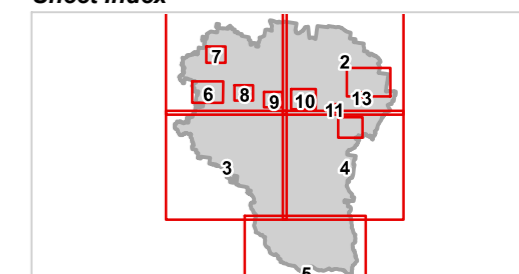
Date: 30/8/2023

Approx Scale @ A3: 1:30,000



kilometres

### Sheet Index



**OM14 Minimum Lot Size Overlay  
Gattton-10**



# Lockyer Valley Regional Council Draft Planning Scheme

REGIONAL COUNCIL

## OM14 Minimum Lot Size Overlay map

### Low density residential zone precincts

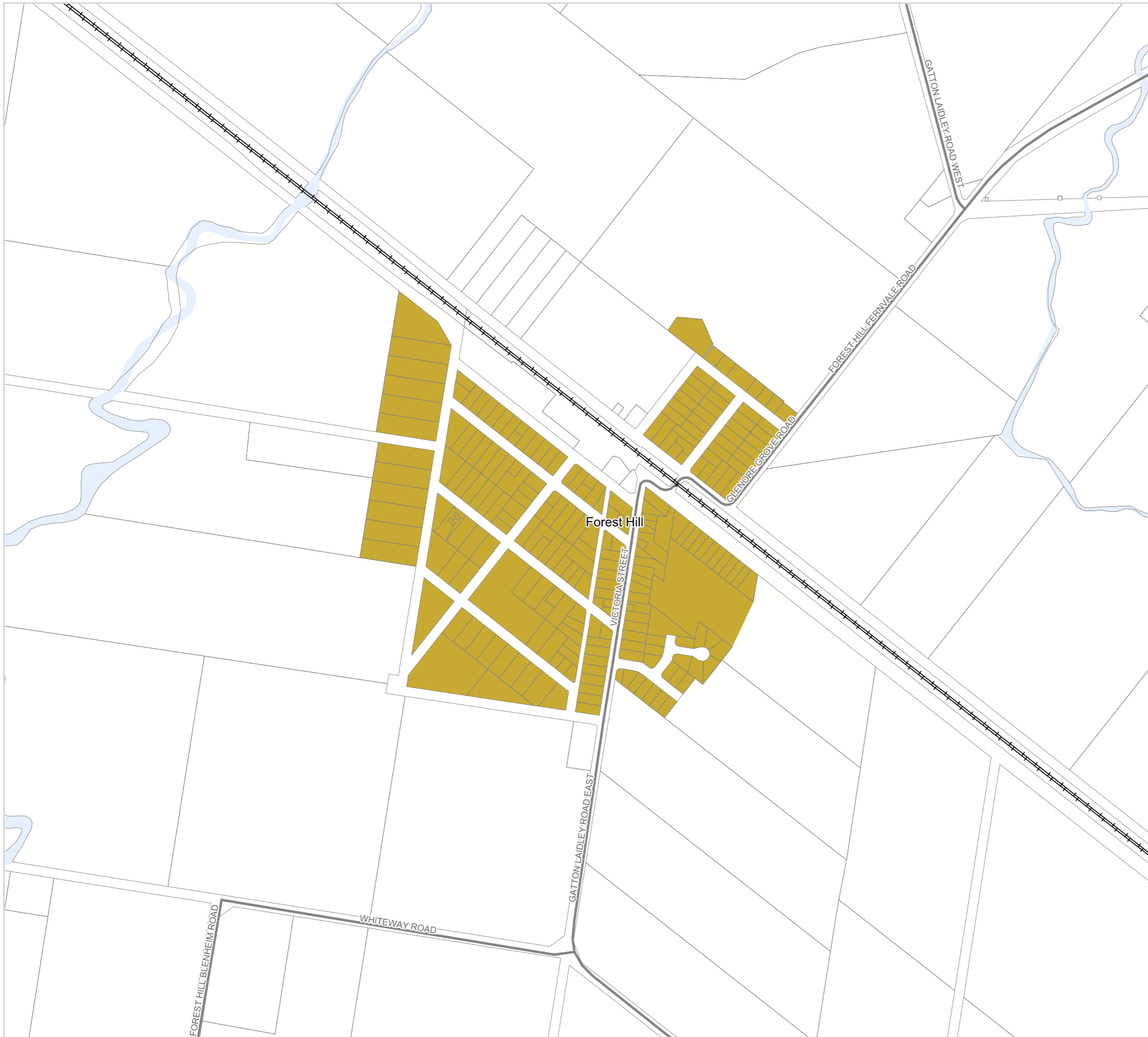
- Suburban (600m<sup>2</sup>)
- Half acre (2,000m<sup>2</sup>)
- Acreage (3,000m<sup>2</sup>)

### Rural residential zone precincts

- Park (5,000m<sup>2</sup>)
- Recreation (10,000m<sup>2</sup> or 1ha)
- Landscape (25,000m<sup>2</sup> or 2.5ha)
- Homestead (40,000m<sup>2</sup> or 4ha)
- No further subdivision

### Other Features

- Major Road
- Railway Network
- Property Boundary
- Local Government Boundary
- Watercourse or Waterbody



### NOTE

Refer to online or electronic mapping where layers overlap or labels obstruct the data on the map.

### MAP INFORMATION

Based on or contains data sourced from the State Government which gives no warranty in relation to the data (including accuracy, reliability, completeness or suitability) and accepts no liability (including without limitation, liability in negligence) for any loss, damage or costs (including consequential damage) relating to any use of the data.  
© Copyright Lockyer Valley Regional Council 2023

### DATA SOURCES

Cadastral data weekly - whole of State Queensland, Rail network - Queensland, Baseline roads and tracks - Queensland; © State of Queensland (Department of Resources) 2023

Gazettal Date: 00/00/0000

Geocentric Datum of Australia (GDA2020 / MGA zone 56)

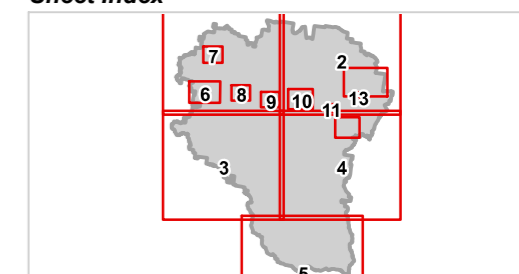


Date: 30/8/2023

Approx Scale @ A3: 1:7,500



### Sheet Index



OM14 Minimum Lot Size Overlay  
Forest Hill-11



# Lockyer Valley Regional Council Draft Planning Scheme

REGIONAL COUNCIL

## OM14 Minimum Lot Size Overlay map

### Low density residential zone precincts

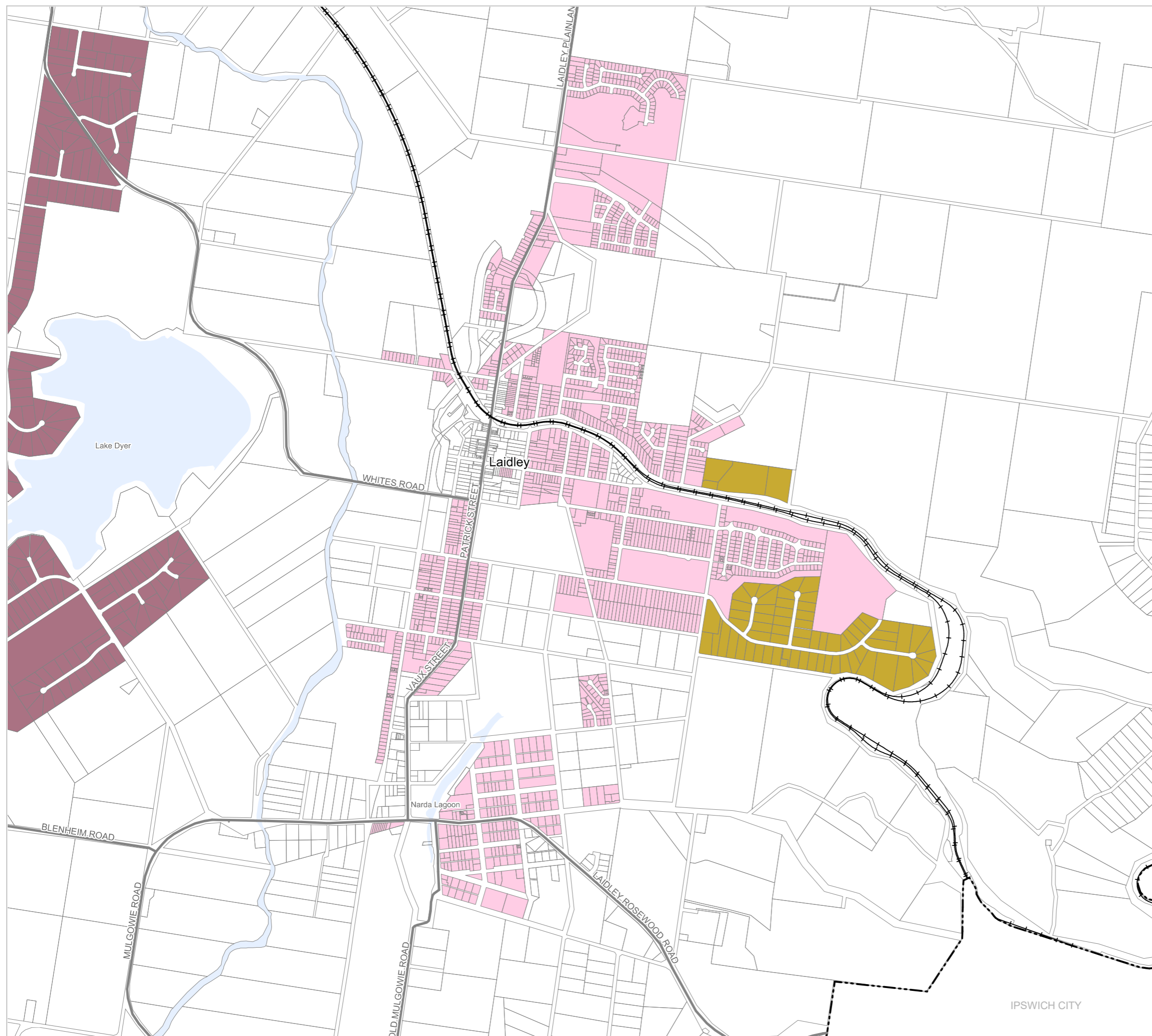
- Suburban (600m<sup>2</sup>)
- Half acre (2,000m<sup>2</sup>)
- Acreage (3,000m<sup>2</sup>)

### Rural residential zone precincts

- Park (5,000m<sup>2</sup>)
- Recreation (10,000m<sup>2</sup> or 1ha)
- Landscape (25,000m<sup>2</sup> or 2.5ha)
- Homestead (40,000m<sup>2</sup> or 4ha)
- No further subdivision

### Other Features

- Major Road
- Railway Network
- Property Boundary
- Local Government Boundary
- Watercourse or Waterbody



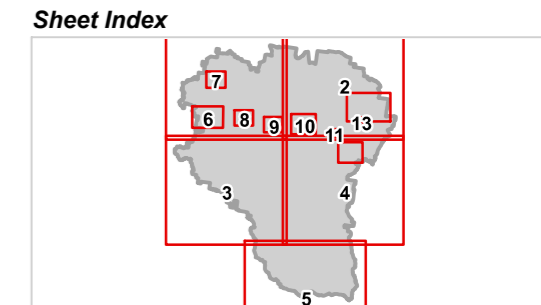
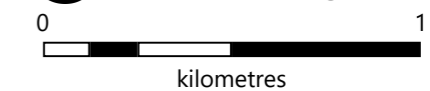
**NOTE**  
Refer to online or electronic mapping where layers overlap or labels obstruct the data on the map.

**MAP INFORMATION**  
Based on or contains data sourced from the State Government which gives no warranty in relation to the data (including accuracy, reliability, completeness or suitability) and accepts no liability (including without limitation, liability in negligence) for any loss, damage or costs (including consequential damage) relating to any use of the data.  
© Copyright Lockyer Valley Regional Council 2023

**DATA SOURCES**  
Cadastral data weekly - whole of State Queensland, Rail network - Queensland, Baseline roads and tracks - Queensland; © State of Queensland (Department of Resources) 2023

Gazettal Date: 00/00/0000  
Geocentric Datum of Australia (GDA2020 / MGA zone 56)

Date: 30/8/2023  
Approx Scale @ A3: 1:20,000



**OM14 Minimum Lot Size Overlay  
Laidley-12**



# Lockyer Valley Regional Council Draft Planning Scheme

REGIONAL COUNCIL

## OM14 Minimum Lot Size Overlay map

### Low density residential zone precincts

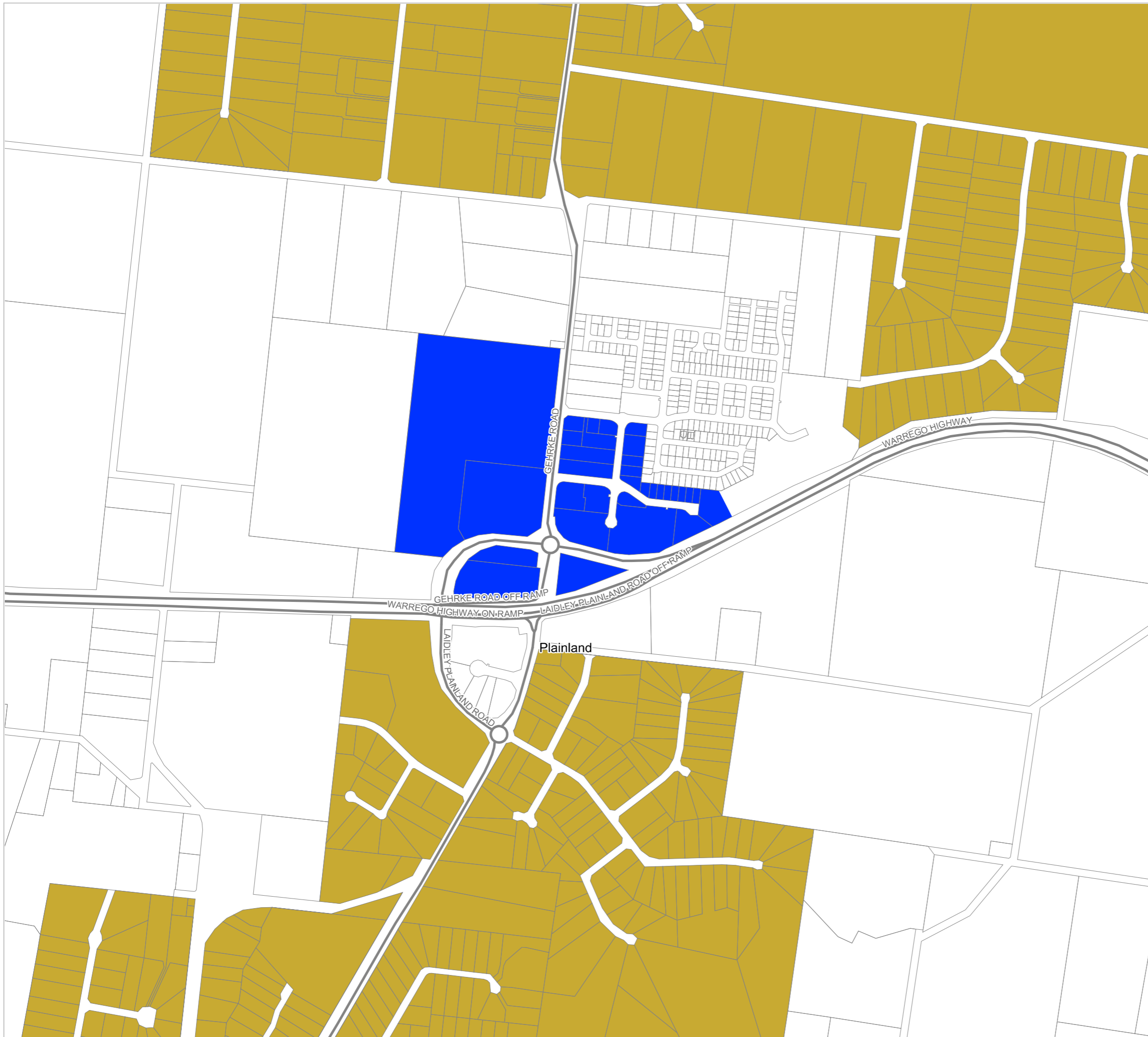
- Suburban (600m<sup>2</sup>)
- Half acre (2,000m<sup>2</sup>)
- Acreage (3,000m<sup>2</sup>)

### Rural residential zone precincts

- Park (5,000m<sup>2</sup>)
- Recreation (10,000m<sup>2</sup> or 1ha)
- Landscape (25,000m<sup>2</sup> or 2.5ha)
- Homestead (40,000m<sup>2</sup> or 4ha)
- No further subdivision

### Other Features

- Major Road
- Railway Network
- Property Boundary
- Local Government Boundary
- Watercourse or Waterbody



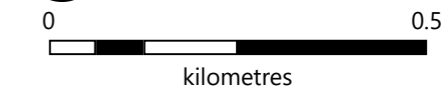
**NOTE**  
Refer to online or electronic mapping where layers overlap or labels obstruct the data on the map.

**MAP INFORMATION**  
Based on or contains data sourced from the State Government which gives no warranty in relation to the data (including accuracy, reliability, completeness or suitability) and accepts no liability (including without limitation, liability in negligence) for any loss, damage or costs (including consequential damage) relating to any use of the data.  
© Copyright Lockyer Valley Regional Council 2023

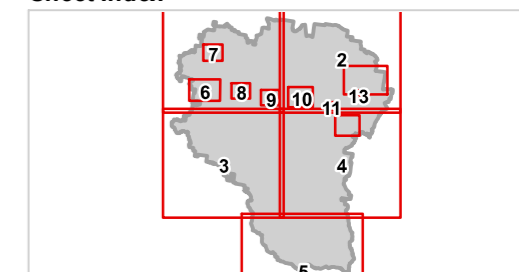
**DATA SOURCES**  
Cadastral data weekly - whole of State Queensland, Rail network - Queensland, Baseline roads and tracks - Queensland; © State of Queensland (Department of Resources) 2023

Gazettal Date: 00/00/0000  
Geocentric Datum of Australia (GDA2020 / MGA zone 56)

Date: 30/8/2023  
Approx Scale @ A3: 1:10,000



### Sheet Index



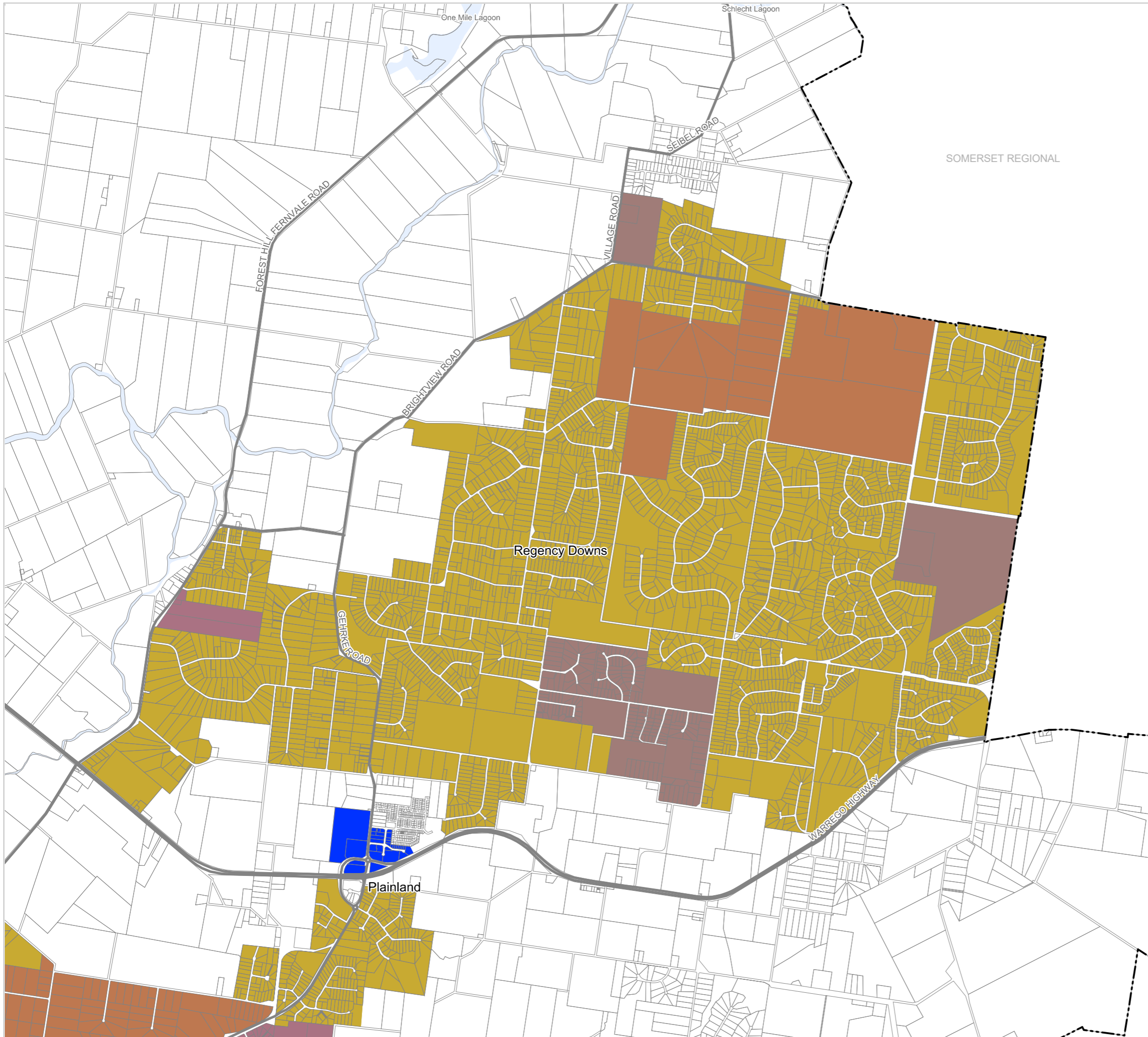
OM14 Minimum Lot Size Overlay  
Plainland-13



# Lockyer Valley Regional Council Draft Planning Scheme

REGIONAL COUNCIL

## OM14 Minimum Lot Size Overlay map



SOMERSET REGIONAL

### Low density residential zone precincts

- Suburban (600m<sup>2</sup>)
- Half acre (2,000m<sup>2</sup>)
- Acreage (3,000m<sup>2</sup>)

### Rural residential zone precincts

- Park (5,000m<sup>2</sup>)
- Recreation (10,000m<sup>2</sup> or 1ha)
- Landscape (25,000m<sup>2</sup> or 2.5ha)
- Homestead (40,000m<sup>2</sup> or 4ha)
- No further subdivision

### Other Features

- Major Road
- Railway Network
- Property Boundary
- Local Government Boundary
- Watercourse or Waterbody

### NOTE

Refer to online or electronic mapping where layers overlap or labels obstruct the data on the map.

### MAP INFORMATION

Based on or contains data sourced from the State Government which gives no warranty in relation to the data (including accuracy, reliability, completeness or suitability) and accepts no liability (including without limitation, liability in negligence) for any loss, damage or costs (including consequential damage) relating to any use of the data.  
© Copyright Lockyer Valley Regional Council 2023

### DATA SOURCES

Cadastral data weekly - whole of State Queensland, Rail network - Queensland, Baseline roads and tracks - Queensland; © State of Queensland (Department of Resources) 2023

Gazettal Date: 00/00/0000

Geocentric Datum of Australia (GDA2020 / MGA zone 56)

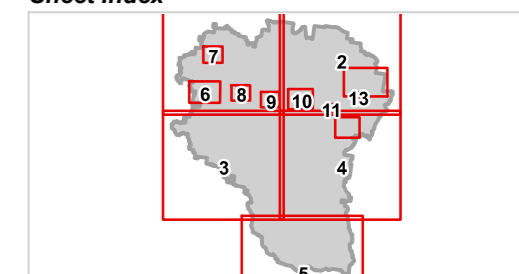


Date: 30/8/2023

Approx Scale @ A3: 1:40,000



### Sheet Index



OM14 Minimum Lot Size Overlay  
Regency Downs-14