



Lockyer Valley Regional Council Draft Planning Scheme

REGIONAL COUNCIL

OM05 Cultural heritage overlay map

Heritage Places

- Local Heritage Place
- Local Heritage Route
- Local Heritage Area
- State Heritage - Fossil Site
- State Heritage Place
- National and/or World Heritage Place
- Within 10m of a Heritage Place

Other Features

- Major Road
- Railway Network
- Property Boundary
- Local Government Boundary
- Watercourse or Waterbody

NOTE

Refer to online or electronic mapping where layers overlap or labels obstruct the data on the map.

MAP INFORMATION

Based on or contains data sourced from the State Government and the Commonwealth Government which gives no warranty in relation to the data (including accuracy, reliability, completeness or suitability) and accepts no liability (including without limitation, liability in negligence) for any loss, damage or costs (including consequential damage) relating to any use of the data.
© Copyright Lockyer Valley Regional Council 2023

DATA SOURCES

Cadastral data weekly - whole of State Queensland, Rail network - Queensland, Baseline roads and tracks - Queensland; © State of Queensland (Department of Resources) 2023. Queensland heritage register boundaries; © State of Queensland (Department of Environment and Science) 2021. World Heritage Areas; © Australian Government (Department of the Environment and Energy) 2023

Gazettal Date: 00/00/0000

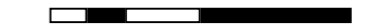
Geocentric Datum of Australia (GDA2020 / MGA zone 56)



Date: 15/6/2023

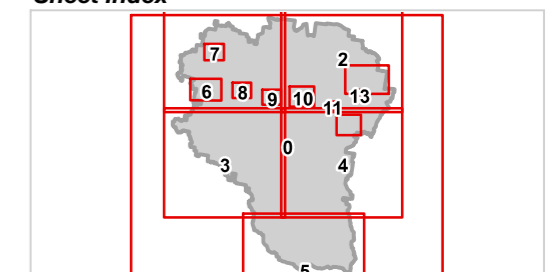
Approx Scale @ A3: 1:250,000

0 10

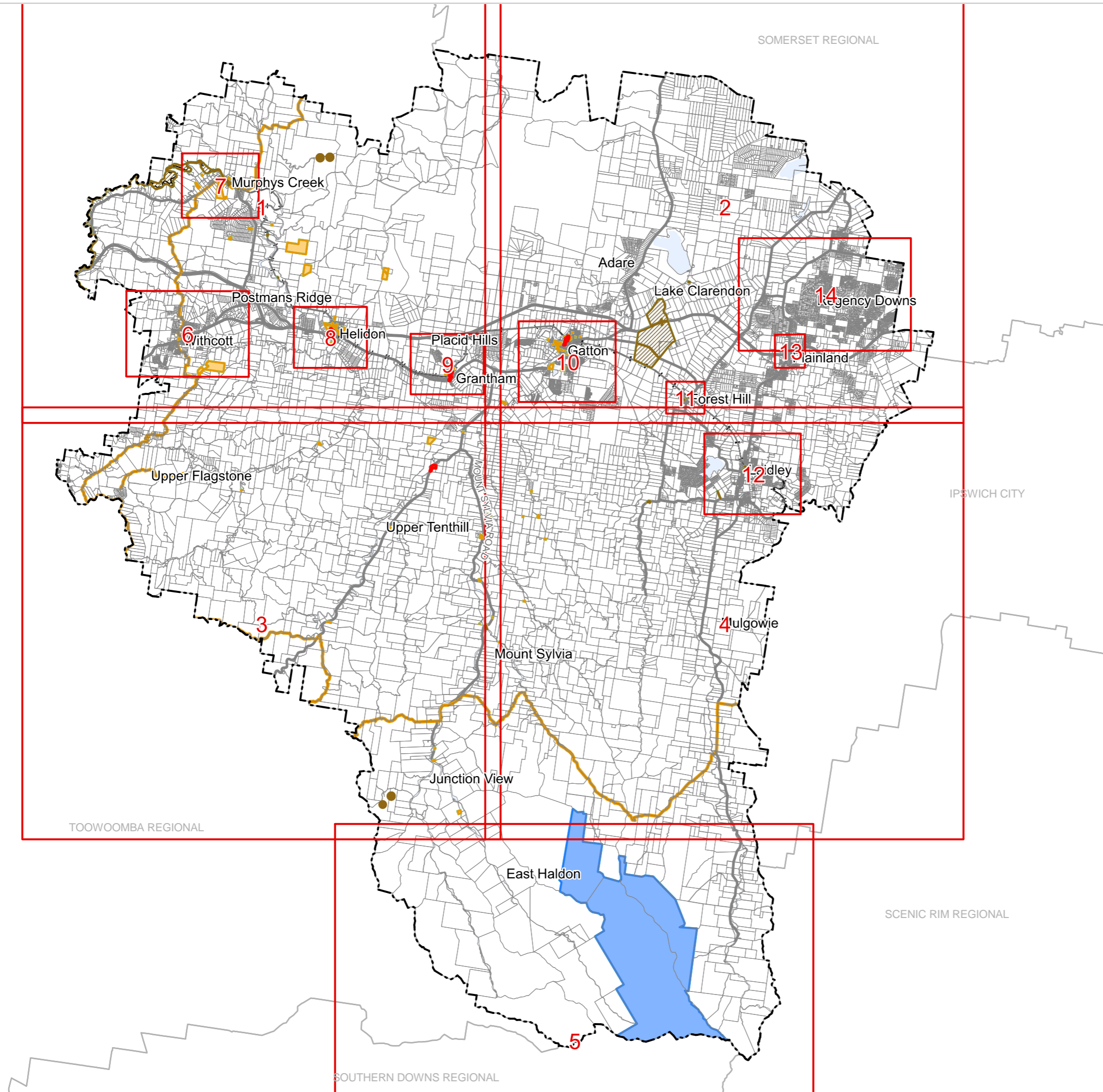


kilometres

Sheet Index



OM05 Cultural heritage overlay
Local government area-00





REGIONAL COUNCIL

OM05 Cultural heritage overlay map



Heritage Places

- Local Heritage Place
- Local Heritage Route
- Local Heritage Area
- State Heritage - Fossil Site
- State Heritage Place
- National and/or World Heritage Place
- Within 10m of a Heritage Place

Other Features

- Major Road
- Railway Network
- Property Boundary
- Local Government Boundary
- Watercourse or Waterbody

NOTE

Refer to online or electronic mapping where layers overlap or labels obstruct the data on the map.

MAP INFORMATION

Based on or contains data sourced from the State Government and the Commonwealth Government which gives no warranty in relation to the data (including accuracy, reliability, completeness or suitability) and accepts no liability (including without limitation, liability in negligence) for any loss, damage or costs (including consequential damage) relating to any use of the data.

DATA SOURCES

Cadastral data weekly - whole of State Queensland, Rail network - Queensland, Baseline roads and tracks - Queensland: © State of Queensland (Department of Resources) 2023. Queensland heritage register boundaries: © State of Queensland (Department of Environment and Science) 2021. World Heritage Areas: © Australian Government (Department of the Environment and Energy) 2023

Gazettal Date: 00/00/0000

Geocentric Datum of Australia (GDA2020 / MGA zone 56)

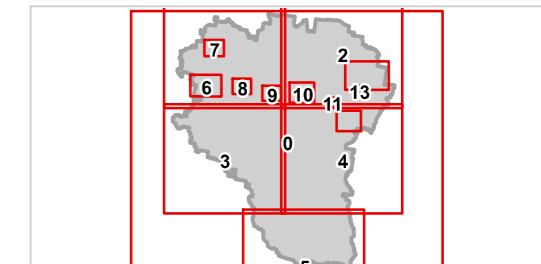


Date: 15/6/2023

Approx Scale @ A3: 1:100,000



Sheet Index



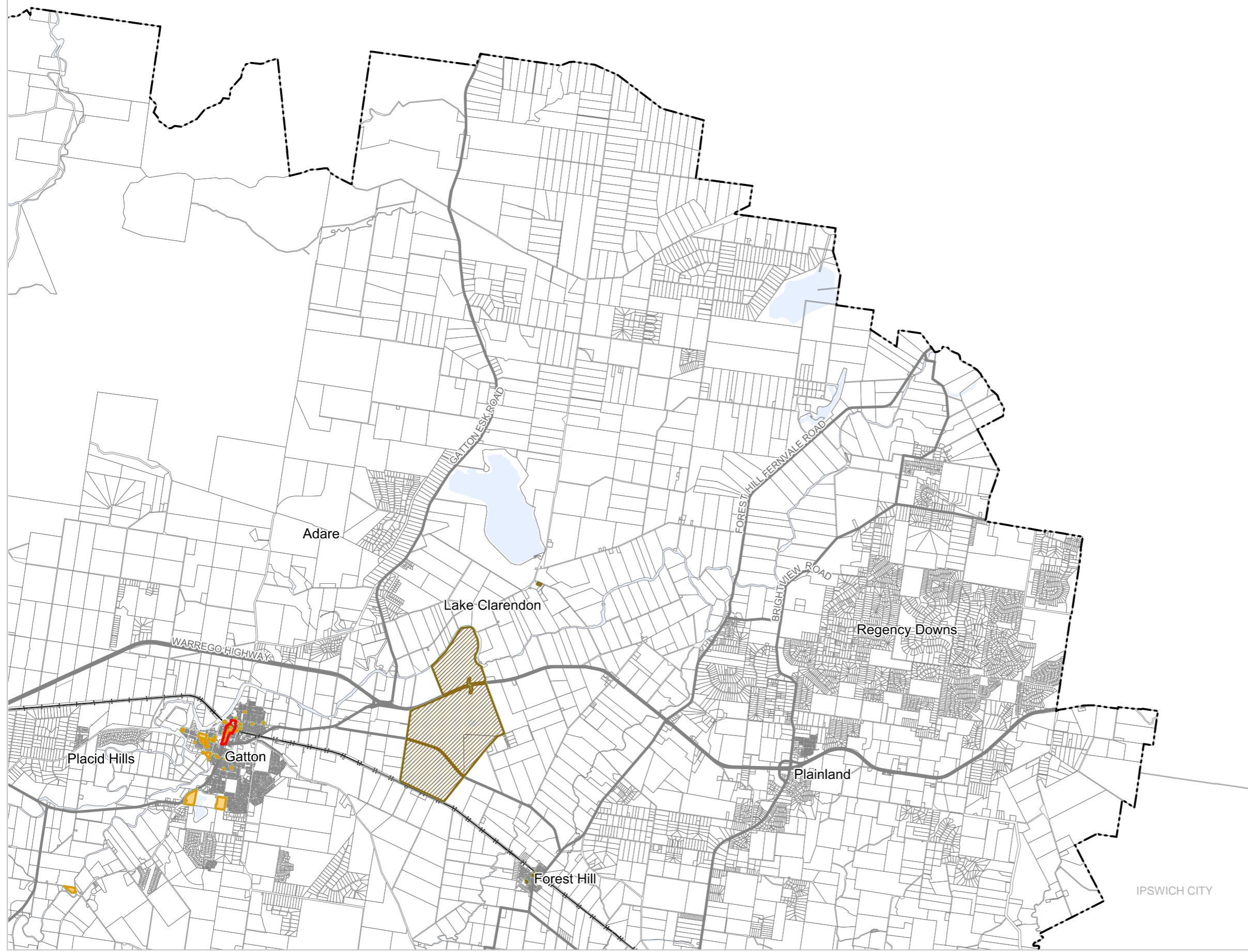
OM5 Cultural heritage overlay LGA north-west-01



REGIONAL COUNCIL

OM05 Cultural heritage overlay map

SOMERSET REGIONAL



Heritage Places

- Local Heritage Place
- Local Heritage Route
- Local Heritage Area
- State Heritage - Fossil Site
- State Heritage Place
- National and/or World Heritage Place
- Within 10m of a Heritage Place

Other Features

- Major Road
- Railway Network
- Property Boundary
- Local Government Boundary
- Watercourse or Waterbody

NOTE

Refer to online or electronic mapping where layers overlap or labels obstruct the data on the map.

MAP INFORMATION

Based on or contains data sourced from the State Government and the Commonwealth Government which gives no warranty in relation to the data (including accuracy, reliability, completeness or suitability) and accepts no liability (including without limitation, liability in negligence) for any loss, damage or costs (including consequential damage) relating to any use of the data.
© Copyright Lockyer Valley Regional Council 2023

DATA SOURCES

Cadastral data weekly - whole of State Queensland, Rail network - Queensland, Baseline roads and tracks - Queensland: © State of Queensland (Department of Resources) 2023. Queensland heritage register boundaries: © State of Queensland (Department of Environment and Science) 2021. World Heritage Areas: © Australian Government (Department of the Environment and Energy) 2023

Gazettal Date: 00/00/0000

Geocentric Datum of Australia (GDA2020 / MGA zone 56)

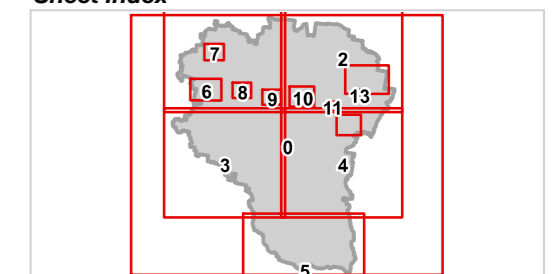


Date: 15/6/2023

Approx Scale @ A3: 1:100,000



Sheet Index



OM5 Cultural heritage overlay
LGA north-east-02

IPSWICH CITY



Lockyer Valley Regional Council Draft Planning Scheme

REGIONAL COUNCIL

OM05 Cultural heritage overlay map

Heritage Places

- Local Heritage Place
- Local Heritage Route
- Local Heritage Area
- State Heritage - Fossil Site
- State Heritage Place
- National and/or World Heritage Place
- Within 10m of a Heritage Place

Other Features

- Major Road
- Railway Network
- Property Boundary
- Local Government Boundary
- Watercourse or Waterbody

NOTE

Refer to online or electronic mapping where layers overlap or labels obstruct the data on the map.

MAP INFORMATION

Based on or contains data sourced from the State Government and the Commonwealth Government which gives no warranty in relation to the data (including accuracy, reliability, completeness or suitability) and accepts no liability (including without limitation, liability in negligence) for any loss, damage or costs (including consequential damage) relating to any use of the data.
© Copyright Lockyer Valley Regional Council 2023

DATA SOURCES

Cadastral data weekly - whole of State Queensland, Rail network - Queensland, Baseline roads and tracks - Queensland: © State of Queensland (Department of Resources) 2023. Queensland heritage register boundaries: © State of Queensland (Department of Environment and Science) 2021. World Heritage Areas: © Australian Government (Department of the Environment and Energy) 2023

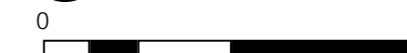
Gazettal Date: 00/00/0000

Geocentric Datum of Australia (GDA2020 / MGA zone 56)

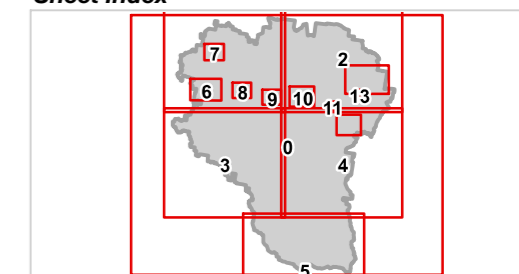


Date: 15/6/2023

Approx Scale @ A3: 1:100,000



Sheet Index



OM5 Cultural heritage overlay
LGA south-west-03



TOOWOOMBA REGIONAL










Lockyer Valley Regional Council Draft Planning Scheme


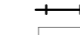


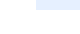
REGIONAL COUNCIL

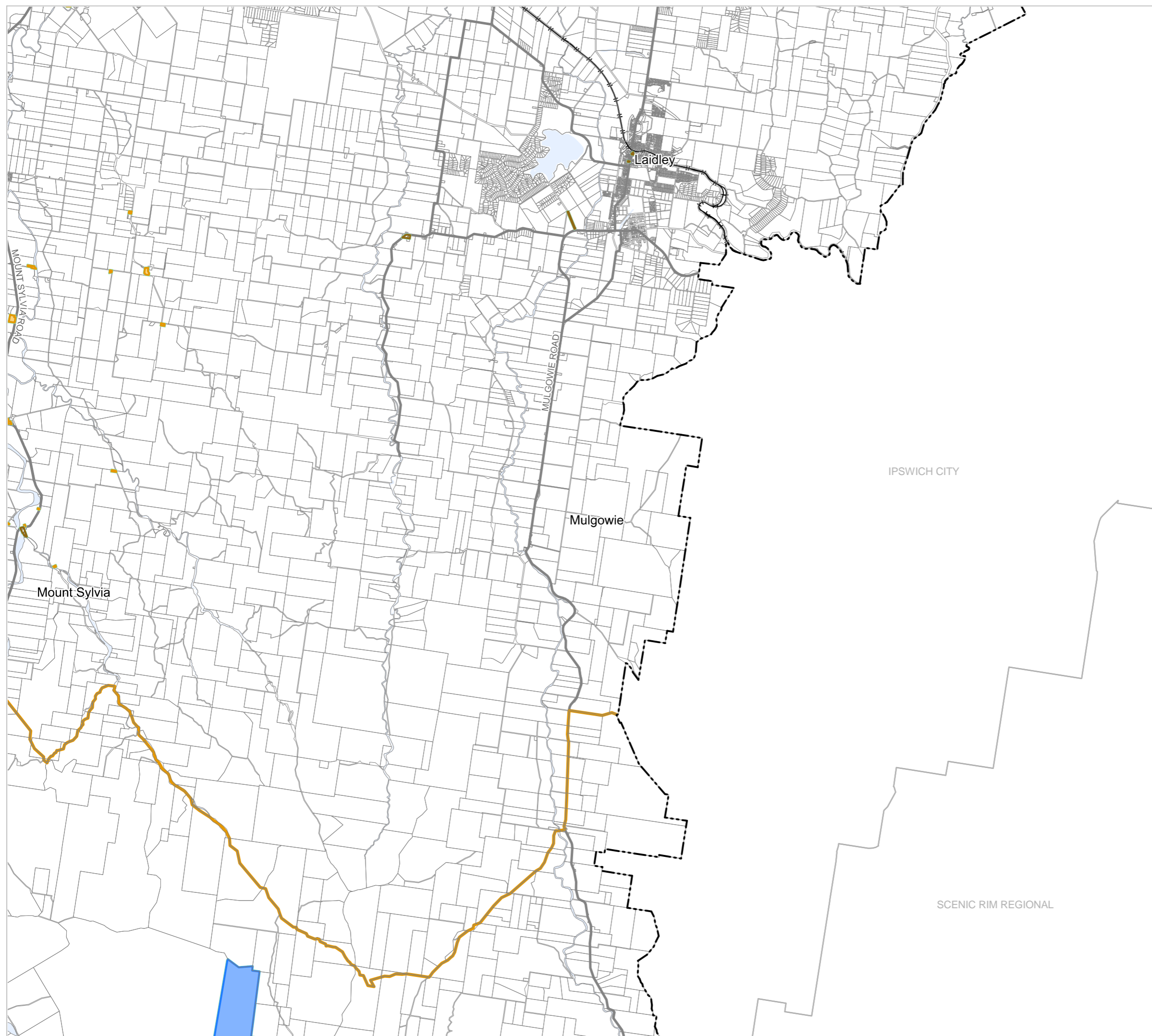
OM05 Cultural heritage overlay map

Heritage Places

-  Local Heritage Place
-  Local Heritage Route
-  Local Heritage Area
-  State Heritage - Fossil Site
-  State Heritage Place
-  National and/or World Heritage Place
-  Within 10m of a Heritage Place

Other Features

-  Major Road
-  Railway Network
-  Property Boundary
-  Local Government Boundary
-  Watercourse or Waterbody



NOTE

Refer to online or electronic mapping where layers overlap or labels obstruct the data on the map.

MAP INFORMATION

Based on or contains data sourced from the State Government and the Commonwealth Government which gives no warranty in relation to the data (including accuracy, reliability, completeness or suitability) and accepts no liability (including without limitation, liability in negligence) for any loss, damage or costs (including consequential damage) relating to any use of the data.
© Copyright Lockyer Valley Regional Council 2023

DATA SOURCES

Cadastral data weekly - whole of State Queensland, Rail network - Queensland, Baseline roads and tracks - Queensland: © State of Queensland (Department of Resources) 2023. Queensland heritage register boundaries: © State of Queensland (Department of Environment and Science) 2021. World Heritage Areas: © Australian Government (Department of the Environment and Energy) 2023

Gazettal Date: 00/00/0000

Geocentric Datum of Australia (GDA2020 / MGA zone 56)

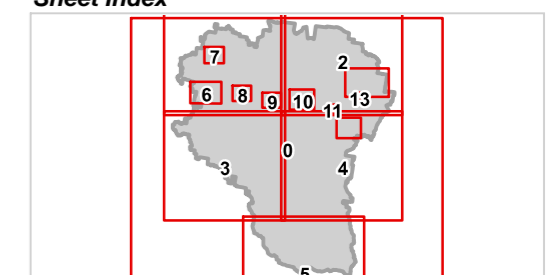


Date: 15/6/2023

Approx Scale @ A3: 1:100,000



Sheet Index



OM5 Cultural heritage overlay
LGA south-east-04



Lockyer Valley Regional Council Draft Planning Scheme

REGIONAL COUNCIL

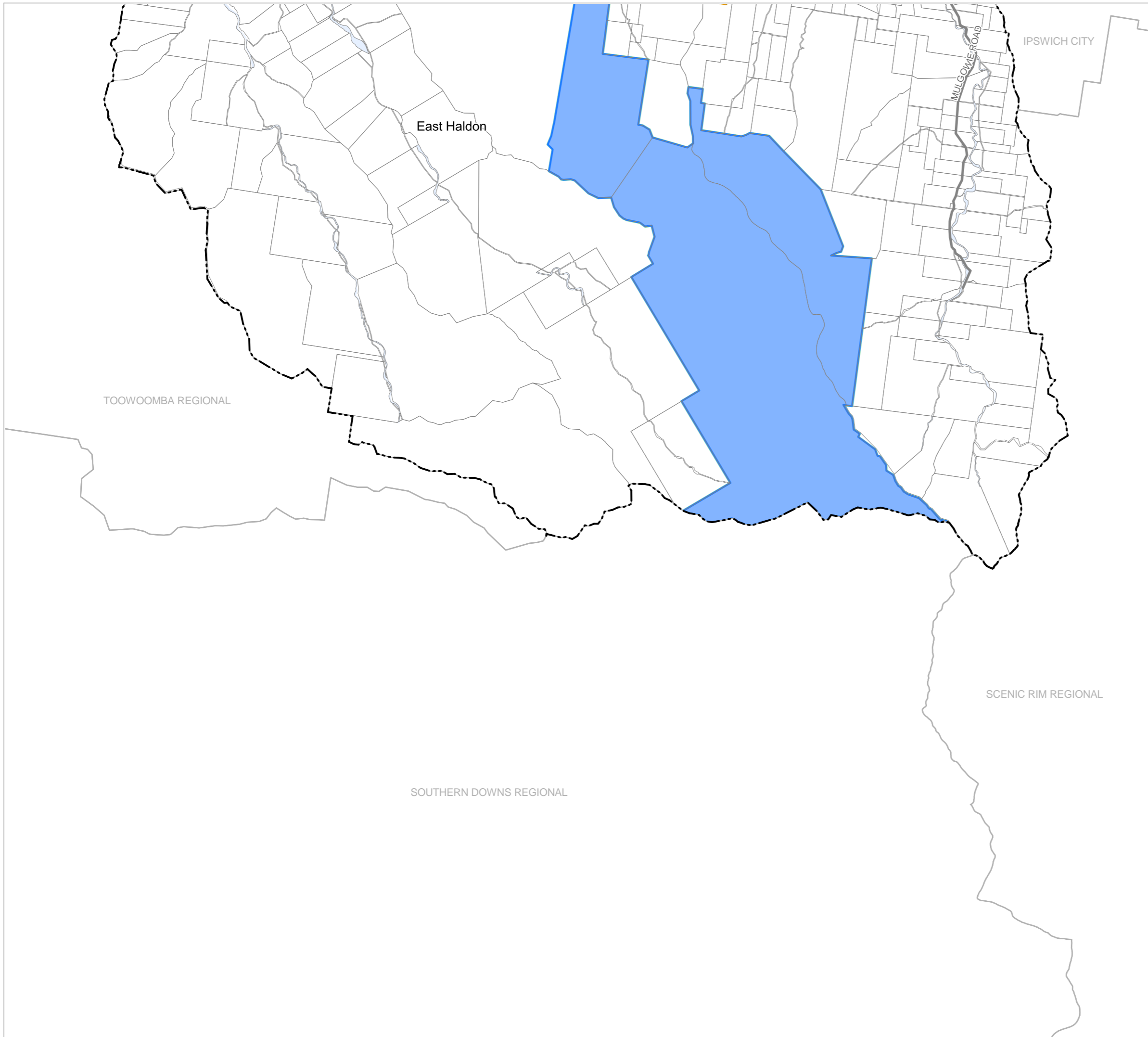
OM5 Cultural heritage overlay map

Heritage Places

- Local Heritage Place
- Local Heritage Route
- Local Heritage Area
- State Heritage - Fossil Site
- State Heritage Place
- National and/or World Heritage Place
- Within 10m of a Heritage Place

Other Features

- Major Road
- Railway Network
- Property Boundary
- Local Government Boundary
- Watercourse or Waterbody



NOTE

Refer to online or electronic mapping where layers overlap or labels obstruct the data on the map.

MAP INFORMATION

Based on or contains data sourced from the State Government and the Commonwealth Government which gives no warranty in relation to the data (including accuracy, reliability, completeness or suitability) and accepts no liability (including without limitation, liability in negligence) for any loss, damage or costs (including consequential damage) relating to any use of the data.
© Copyright Lockyer Valley Regional Council 2023

DATA SOURCES

Cadastral data weekly - whole of State Queensland, Rail network - Queensland, Baseline roads and tracks - Queensland: © State of Queensland (Department of Resources) 2023. Queensland heritage register boundaries: © State of Queensland (Department of Environment and Science) 2021. World Heritage Areas: © Australian Government (Department of the Environment and Energy) 2023

Gazettal Date: 00/00/0000

Geocentric Datum of Australia (GDA2020 / MGA zone 56)

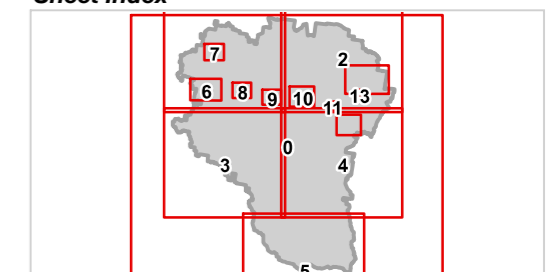


Date: 15/6/2023

Approx Scale @ A3: 1:100,000



Sheet Index



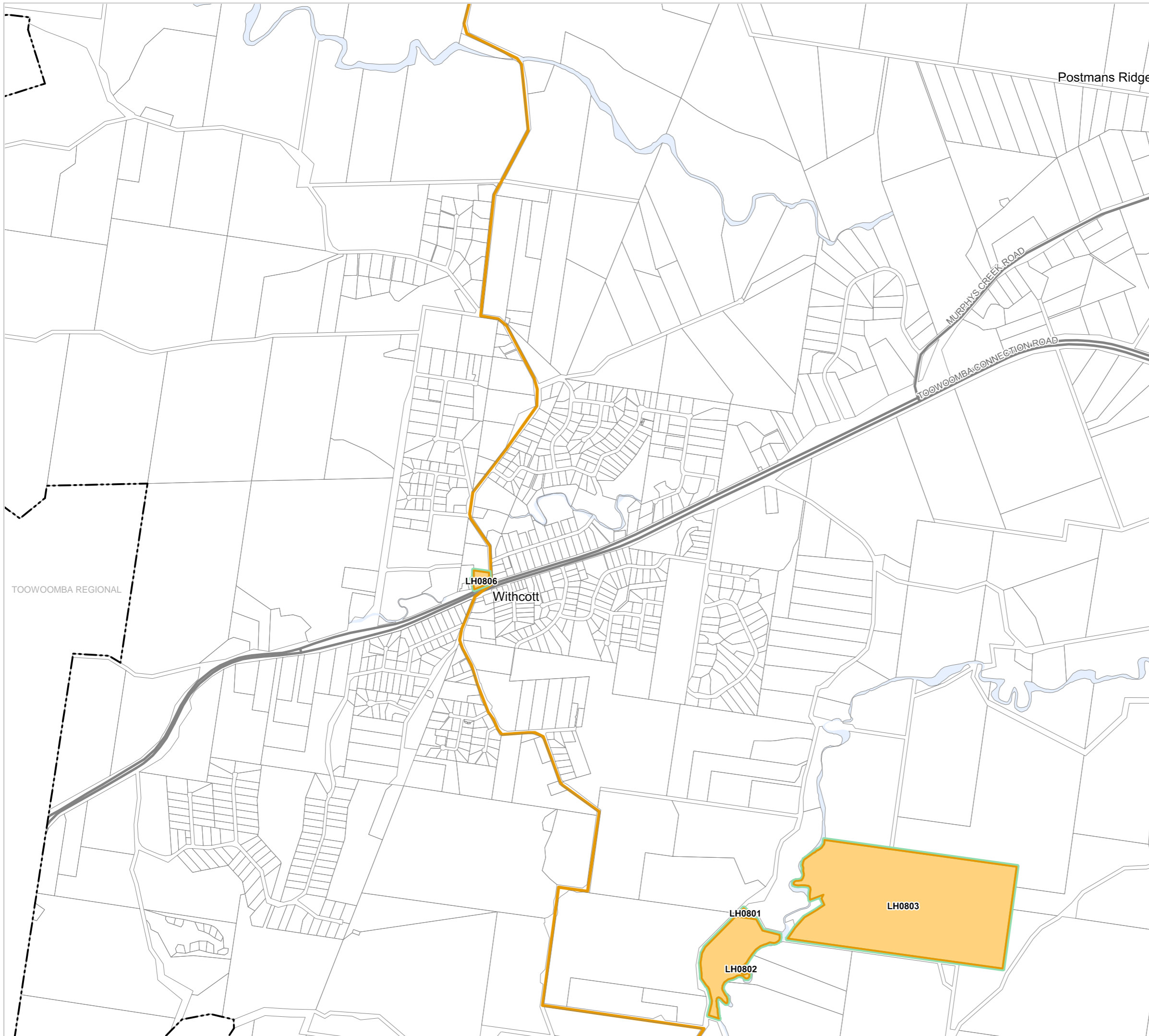
OM5 Cultural heritage overlay
LGA south-05



Lockyer Valley Regional Council Draft Planning Scheme

REGIONAL COUNCIL

OM05 Cultural heritage overlay map



Heritage Places

- Local Heritage Place
- Local Heritage Route
- Local Heritage Area
- State Heritage - Fossil Site
- State Heritage Place
- National and/or World Heritage Place
- Within 10m of a Heritage Place

Other Features

- Major Road
- Railway Network
- Property Boundary
- Local Government Boundary
- Watercourse or Waterbody

NOTE

Refer to online or electronic mapping where layers overlap or labels obstruct the data on the map.

MAP INFORMATION

Based on or contains data sourced from the State Government and the Commonwealth Government which gives no warranty in relation to the data (including accuracy, reliability, completeness or suitability) and accepts no liability (including without limitation, liability in negligence) for any loss, damage or costs (including consequential damage) relating to any use of the data.
© Copyright Lockyer Valley Regional Council 2023

DATA SOURCES

Cadastral data weekly - whole of State Queensland, Rail network - Queensland, Baseline roads and tracks - Queensland: © State of Queensland (Department of Resources) 2023. Queensland heritage register boundaries: © State of Queensland (Department of Environment and Science) 2021. World Heritage Areas: © Australian Government (Department of the Environment and Energy) 2023

Gazettal Date: 00/00/0000

Geocentric Datum of Australia (GDA2020 / MGA zone 56)

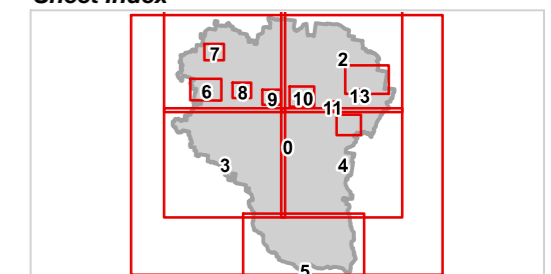


Date: 15/6/2023

Approx Scale @ A3: 1:20,000



Sheet Index



OM05 Cultural heritage overlay
Withcott-06



REGIONAL COUNCIL

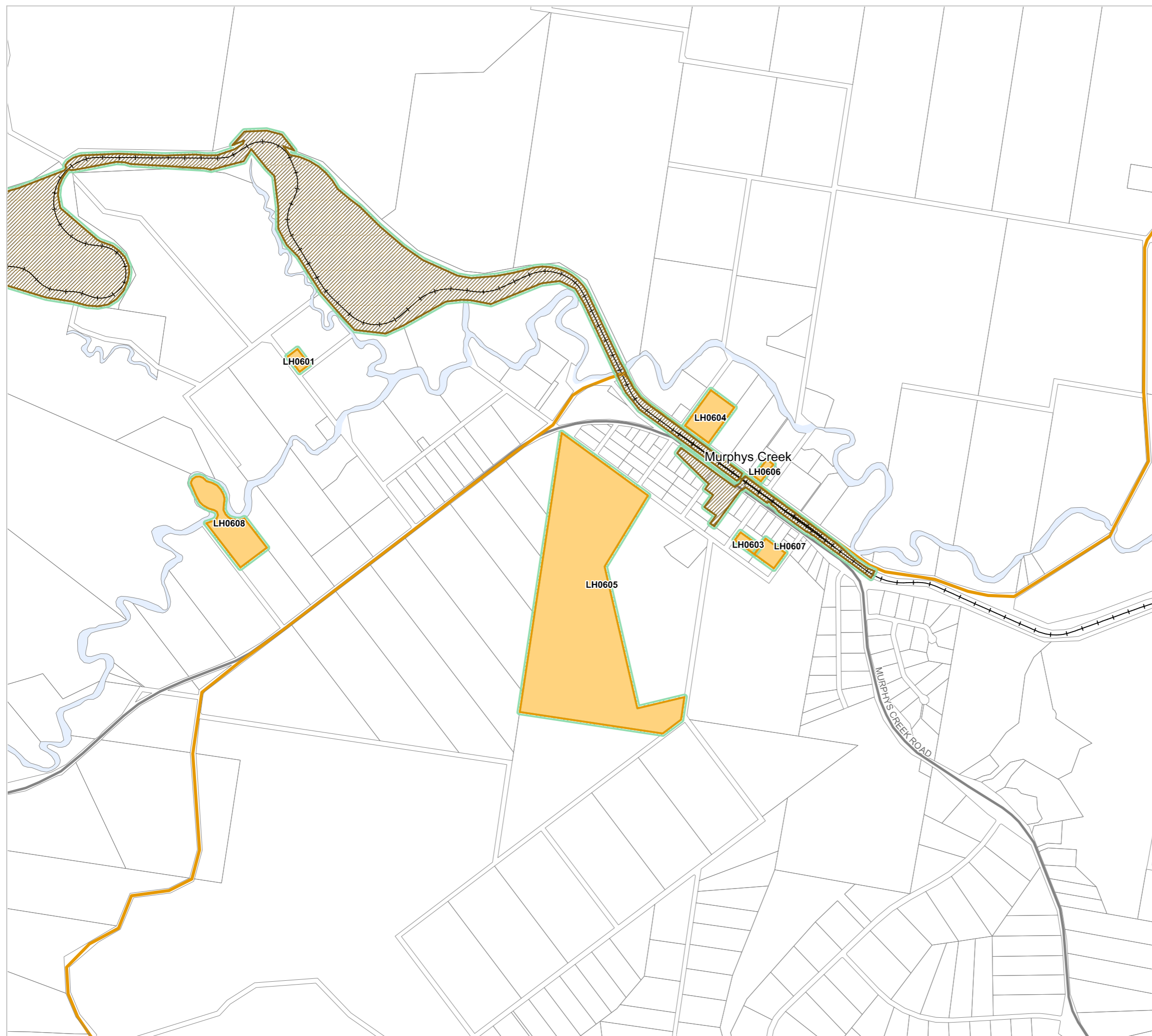
OM05 Cultural heritage overlay map

Heritage Places

- Local Heritage Place
- Local Heritage Route
- Local Heritage Area
- State Heritage - Fossil Site
- State Heritage Place
- National and/or World Heritage Place
- Within 10m of a Heritage Place

Other Features

- Major Road
- Railway Network
- Property Boundary
- Local Government Boundary
- Watercourse or Waterbody



NOTE

Refer to online or electronic mapping where layers overlap or labels obstruct the data on the map.

MAP INFORMATION

Based on or contains data sourced from the State Government and the Commonwealth Government which gives no warranty in relation to the data (including accuracy, reliability, completeness or suitability) and accepts no liability (including without limitation, liability in negligence) for any loss, damage or costs (including consequential damage) relating to any use of the data.
© Copyright Lockyer Valley Regional Council 2023

DATA SOURCES

Cadastral data weekly - whole of State Queensland, Rail network - Queensland, Baseline roads and tracks - Queensland: © State of Queensland (Department of Resources) 2023. Queensland heritage register boundaries: © State of Queensland (Department of Environment and Science) 2021. World Heritage Areas: © Australian Government (Department of the Environment and Energy) 2023

Gazettal Date: 00/00/0000

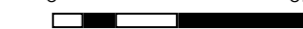
Geocentric Datum of Australia (GDA2020 / MGA zone 56)



Date: 15/6/2023

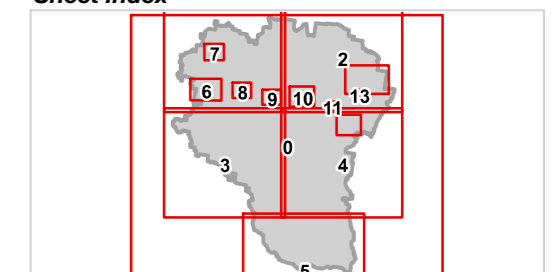
Approx Scale @ A3: 1:15,000

0 0.5



kilometres

Sheet Index



OM5 Cultural heritage overlay
Murphys Creek-07



REGIONAL COUNCIL

OM05 Cultural heritage overlay map

Heritage Places

- Local Heritage Place
- Local Heritage Route
- Local Heritage Area
- State Heritage - Fossil Site
- State Heritage Place
- National and/or World Heritage Place
- Within 10m of a Heritage Place

Other Features

- Major Road
- Railway Network
- Property Boundary
- Local Government Boundary
- Watercourse or Waterbody



NOTE

Refer to online or electronic mapping where layers overlap or labels obstruct the data on the map.

MAP INFORMATION

Based on or contains data sourced from the State Government and the Commonwealth Government which gives no warranty in relation to the data (including accuracy, reliability, completeness or suitability) and accepts no liability (including without limitation, liability in negligence) for any loss, damage or costs (including consequential damage) relating to any use of the data.

© Copyright Lockyer Valley Regional Council 2023

DATA SOURCES

Cadastral data weekly - whole of State Queensland, Rail network - Queensland, Baseline roads and tracks - Queensland: © State of Queensland (Department of Resources) 2023. Queensland heritage register boundaries: © State of Queensland (Department of Environment and Science) 2021. World Heritage Areas: © Australian Government (Department of the Environment and Energy) 2023

Gazettal Date: 00/00/0000

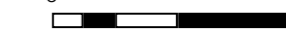
Geocentric Datum of Australia (GDA2020 / MGA zone 56)



Date: 15/6/2023

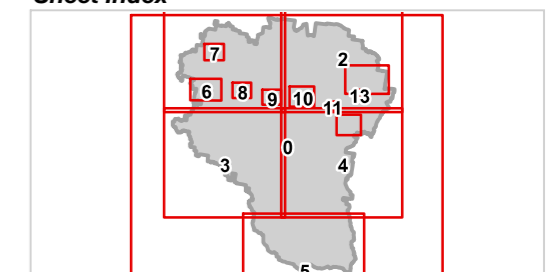
Approx Scale @ A3: 1:15,000

0 0.5



kilometres

Sheet Index



OM5 Cultural heritage overlay Helidon-08










Lockyer Valley Regional Council Draft Planning Scheme


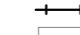


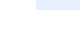
REGIONAL COUNCIL

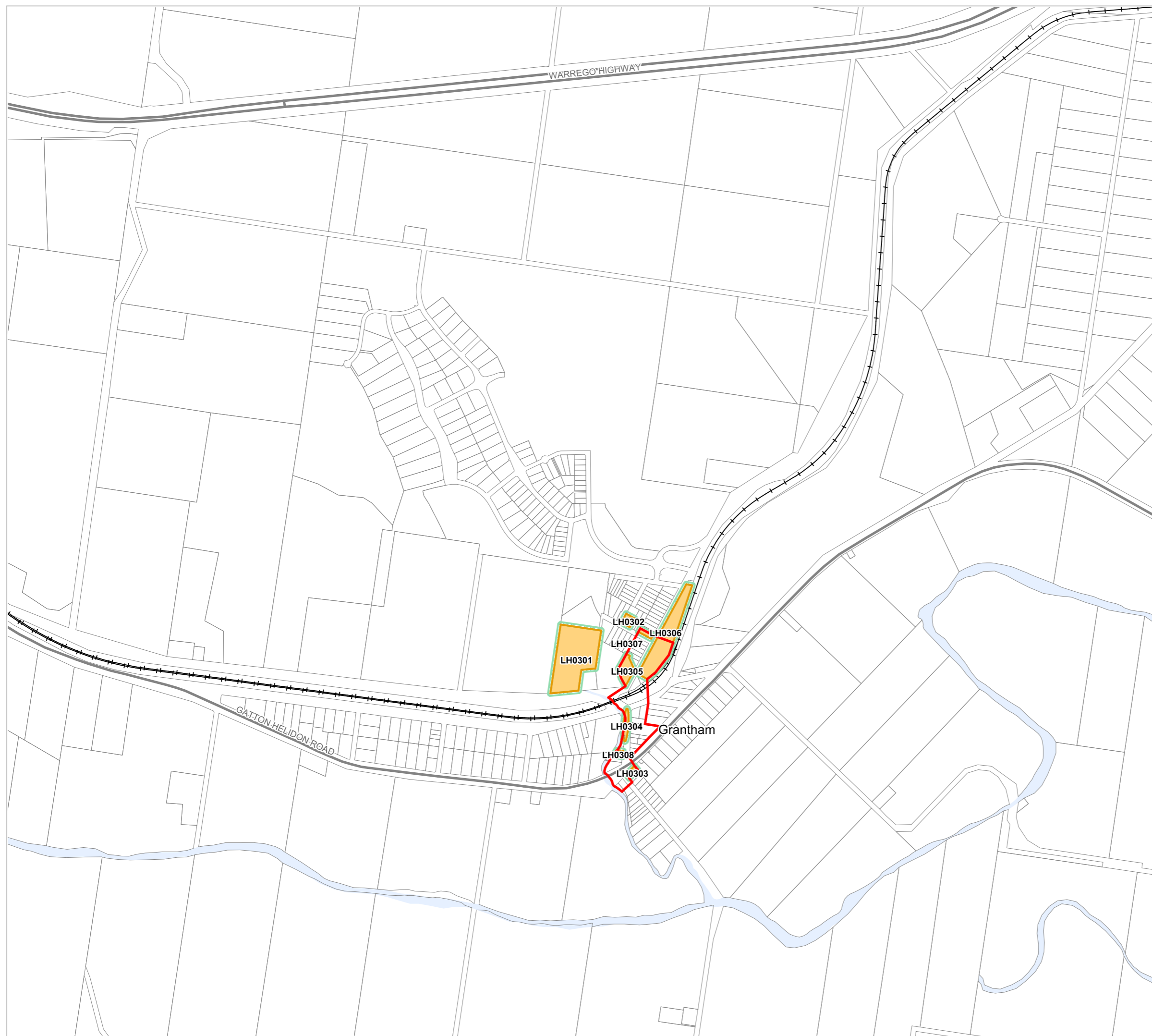
OM05 Cultural heritage overlay map

Heritage Places

-  Local Heritage Place
-  Local Heritage Route
-  Local Heritage Area
-  State Heritage - Fossil Site
-  State Heritage Place
-  National and/or World Heritage Place
-  Within 10m of a Heritage Place

Other Features

-  Major Road
-  Railway Network
-  Property Boundary
-  Local Government Boundary
-  Watercourse or Waterbody



NOTE

Refer to online or electronic mapping where layers overlap or labels obstruct the data on the map.

MAP INFORMATION

Based on or contains data sourced from the State Government and the Commonwealth Government which gives no warranty in relation to the data (including accuracy, reliability, completeness or suitability) and accepts no liability (including without limitation, liability in negligence) for any loss, damage or costs (including consequential damage) relating to any use of the data.
© Copyright Lockyer Valley Regional Council 2023

DATA SOURCES

Cadastral data weekly - whole of State Queensland, Rail network - Queensland, Baseline roads and tracks - Queensland: © State of Queensland (Department of Resources) 2023. Queensland heritage register boundaries: © State of Queensland (Department of Environment and Science) 2021. World Heritage Areas: © Australian Government (Department of the Environment and Energy) 2023

Gazettal Date: 00/00/0000

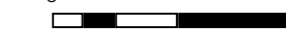
Geocentric Datum of Australia (GDA2020 / MGA zone 56)



Date: 15/6/2023

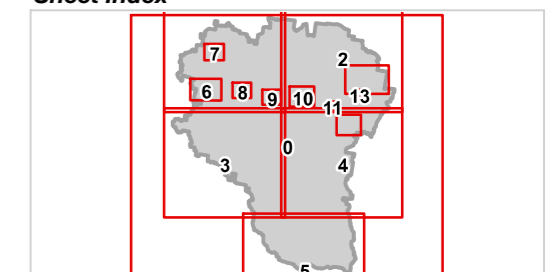
Approx Scale @ A3: 1:15,000

0 0.5



kilometres

Sheet Index



OM05 Cultural heritage overlay
Grantham-09










Lockyer Valley Regional Council Draft Planning Scheme


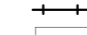


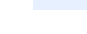
REGIONAL COUNCIL

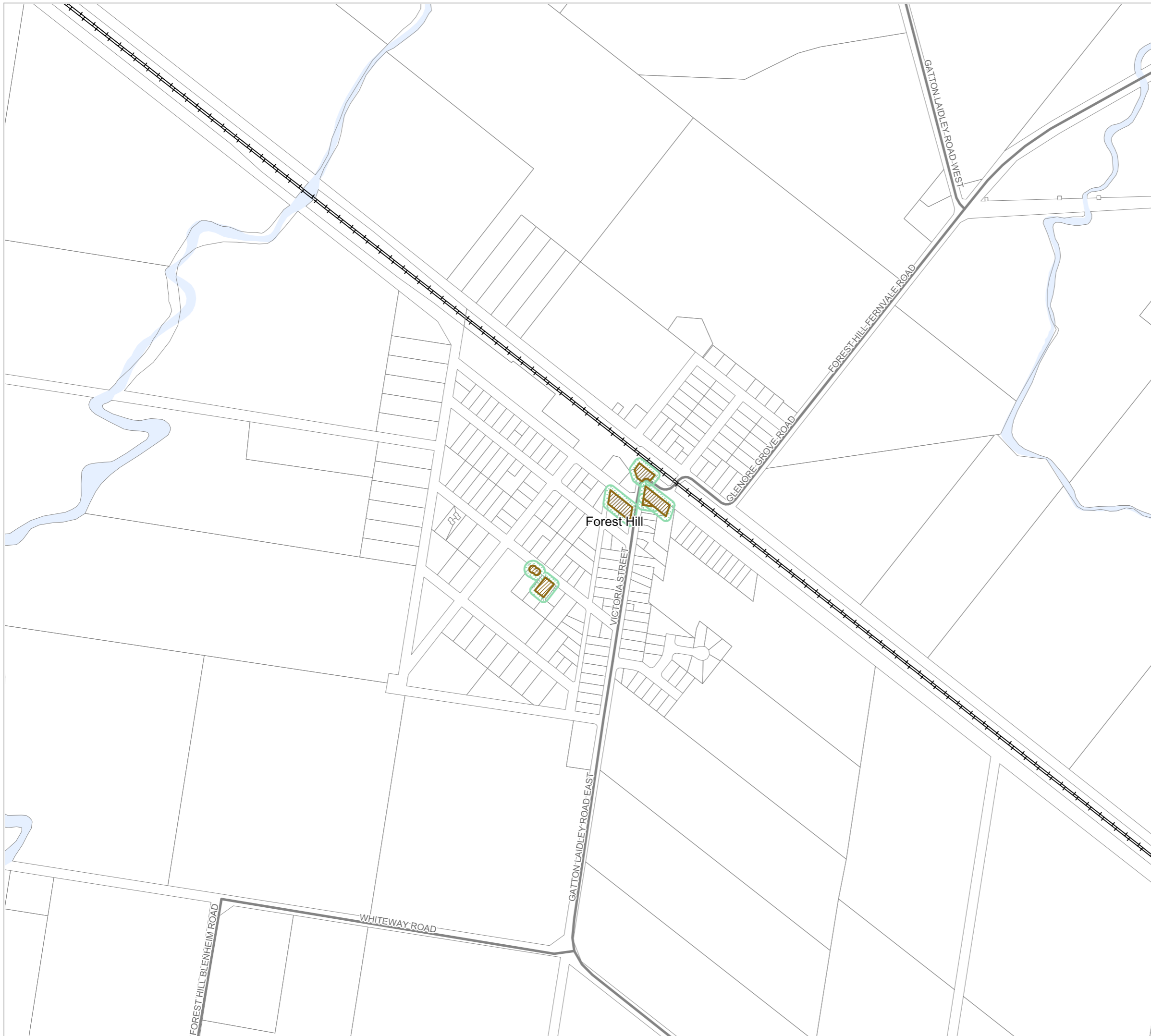
OM5 Cultural heritage overlay map

Heritage Places

-  Local Heritage Place
-  Local Heritage Route
-  Local Heritage Area
-  State Heritage - Fossil Site
-  State Heritage Place
-  National and/or World Heritage Place
-  Within 10m of a Heritage Place

Other Features

-  Major Road
-  Railway Network
-  Property Boundary
-  Local Government Boundary
-  Watercourse or Waterbody



NOTE

Refer to online or electronic mapping where layers overlap or labels obstruct the data on the map.

MAP INFORMATION

Based on or contains data sourced from the State Government and the Commonwealth Government which gives no warranty in relation to the data (including accuracy, reliability, completeness or suitability) and accepts no liability (including without limitation, liability in negligence) for any loss, damage or costs (including consequential damage) relating to any use of the data.
© Copyright Lockyer Valley Regional Council 2023

DATA SOURCES

Cadastral data weekly - whole of State Queensland, Rail network - Queensland, Baseline roads and tracks - Queensland: © State of Queensland (Department of Resources) 2023. Queensland heritage register boundaries: © State of Queensland (Department of Environment and Science) 2021. World Heritage Areas: © Australian Government (Department of the Environment and Energy) 2023

Gazettal Date: 00/00/0000

Geocentric Datum of Australia (GDA2020 / MGA zone 56)



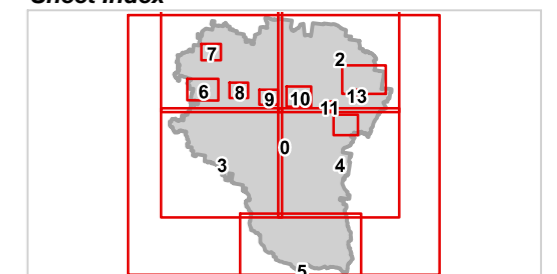
Date: 15/6/2023

Approx Scale @ A3: 1:7,500

0 0.5

kilometres

Sheet Index



OM5 Cultural heritage overlay
Forest Hill-11



Lockyer Valley Regional Council Draft Planning Scheme

REGIONAL COUNCIL

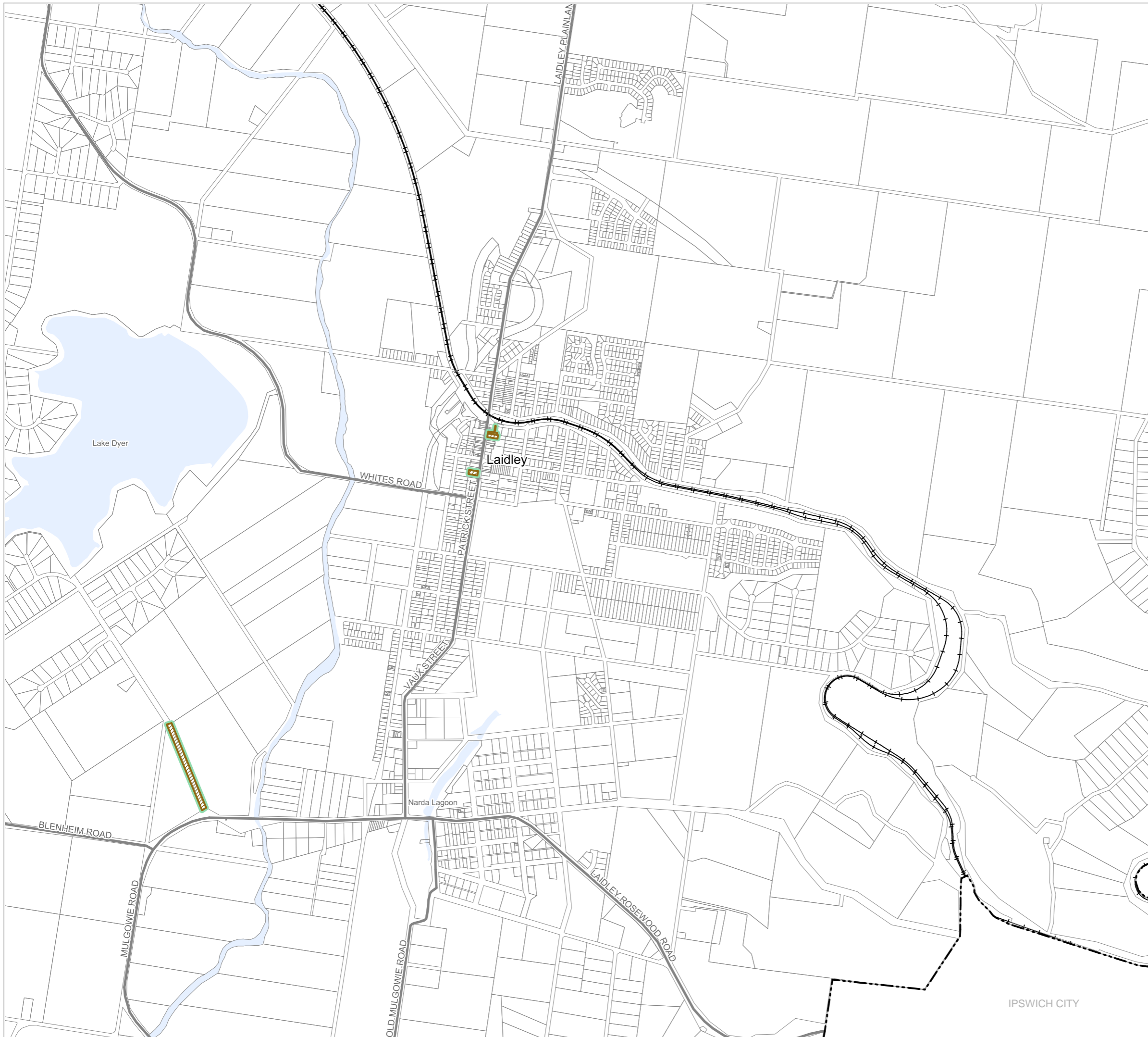
OM05 Cultural heritage overlay map

Heritage Places

- Local Heritage Place
- Local Heritage Route
- Local Heritage Area
- State Heritage - Fossil Site
- State Heritage Place
- National and/or World Heritage Place
- Within 10m of a Heritage Place

Other Features

- Major Road
- Railway Network
- Property Boundary
- Local Government Boundary
- Watercourse or Waterbody



NOTE

Refer to online or electronic mapping where layers overlap or labels obstruct the data on the map.

MAP INFORMATION

Based on or contains data sourced from the State Government and the Commonwealth Government which gives no warranty in relation to the data (including accuracy, reliability, completeness or suitability) and accepts no liability (including without limitation, liability in negligence) for any loss, damage or costs (including consequential damage) relating to any use of the data.
© Copyright Lockyer Valley Regional Council 2023

DATA SOURCES

Cadastral data weekly - whole of State Queensland, Rail network - Queensland, Baseline roads and tracks - Queensland: © State of Queensland (Department of Resources) 2023. Queensland heritage register boundaries: © State of Queensland (Department of Environment and Science) 2021. World Heritage Areas: © Australian Government (Department of the Environment and Energy) 2023

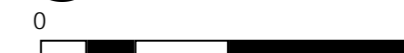
Gazettal Date: 00/00/0000

Geocentric Datum of Australia (GDA2020 / MGA zone 56)

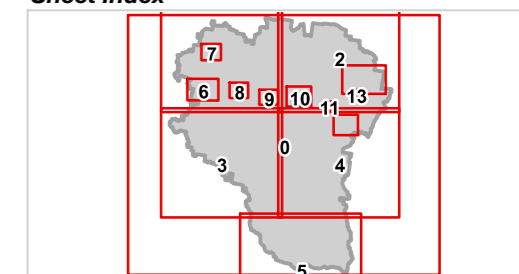


Date: 15/6/2023

Approx Scale @ A3: 1:20,000



Sheet Index



OM5 Cultural heritage overlay
Laidley-12

IPSWICH CITY



Lockyer Valley Regional Council Draft Planning Scheme

REGIONAL COUNCIL

OM05 Cultural heritage overlay map

Heritage Places

- Local Heritage Place
- Local Heritage Route
- Local Heritage Area
- State Heritage - Fossil Site
- State Heritage Place
- National and/or World Heritage Place
- Within 10m of a Heritage Place

Other Features

- Major Road
- Railway Network
- Property Boundary
- Local Government Boundary
- Watercourse or Waterbody



NOTE

Refer to online or electronic mapping where layers overlap or labels obstruct the data on the map.

MAP INFORMATION

Based on or contains data sourced from the State Government and the Commonwealth Government which gives no warranty in relation to the data (including accuracy, reliability, completeness or suitability) and accepts no liability (including without limitation, liability in negligence) for any loss, damage or costs (including consequential damage) relating to any use of the data.
© Copyright Lockyer Valley Regional Council 2023

DATA SOURCES

Cadastral data weekly - whole of State Queensland, Rail network - Queensland, Baseline roads and tracks - Queensland: © State of Queensland (Department of Resources) 2023. Queensland heritage register boundaries: © State of Queensland (Department of Environment and Science) 2021. World Heritage Areas: © Australian Government (Department of the Environment and Energy) 2023

Gazettal Date: 00/00/0000

Geocentric Datum of Australia (GDA2020 / MGA zone 56)



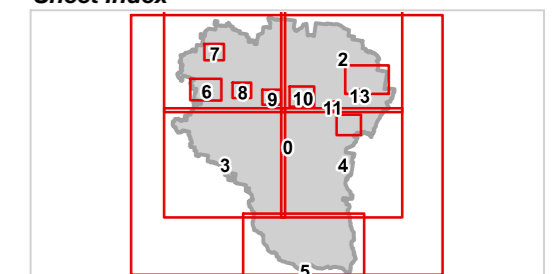
Date: 15/6/2023

Approx Scale @ A3: 1:10,000

0 0.5



Sheet Index



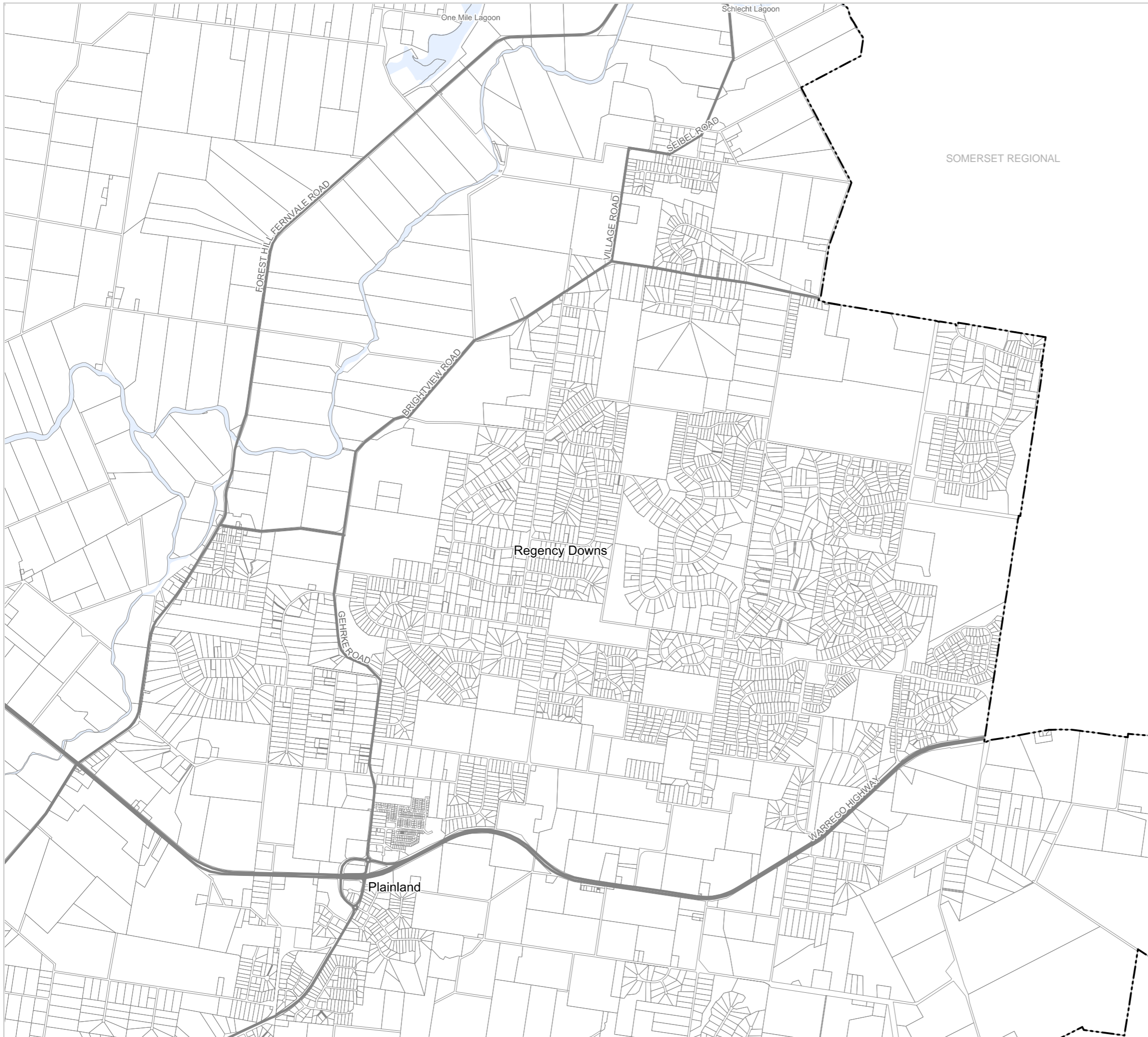
OM05 Cultural heritage overlay
Plainland-13



Lockyer Valley Regional Council Draft Planning Scheme

REGIONAL COUNCIL

OM05 Cultural heritage overlay map



SOMERSET REGIONAL

Heritage Places

- Local Heritage Place
- Local Heritage Route
- Local Heritage Area
- State Heritage - Fossil Site
- State Heritage Place
- National and/or World Heritage Place
- Within 10m of a Heritage Place

Other Features

- Major Road
- Railway Network
- Property Boundary
- Local Government Boundary
- Watercourse or Waterbody

NOTE

Refer to online or electronic mapping where layers overlap or labels obstruct the data on the map.

MAP INFORMATION

Based on or contains data sourced from the State Government and the Commonwealth Government which gives no warranty in relation to the data (including accuracy, reliability, completeness or suitability) and accepts no liability (including without limitation, liability in negligence) for any loss, damage or costs (including consequential damage) relating to any use of the data.
© Copyright Lockyer Valley Regional Council 2023

DATA SOURCES

Cadastral data weekly - whole of State Queensland, Rail network - Queensland, Baseline roads and tracks - Queensland: © State of Queensland (Department of Resources) 2023. Queensland heritage register boundaries: © State of Queensland (Department of Environment and Science) 2021. World Heritage Areas: © Australian Government (Department of the Environment and Energy) 2023

Gazettal Date: 00/00/0000

Geocentric Datum of Australia (GDA2020 / MGA zone 56)

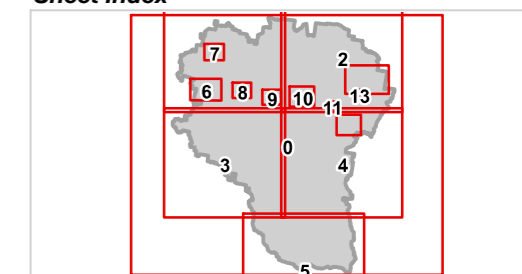


Date: 15/6/2023

Approx Scale @ A3: 1:40,000



Sheet Index



OM5 Cultural heritage overlay
Regency Downs-14