

Zone: Conservation

The purpose of the Conservation zone is to provide for the management, protection and restoration of areas that support one or more of the following:

- biological diversity;
- ecological integrity;
- naturally occurring landforms.

The purpose of the Conservation zone is achieved through the following overall outcomes, including but not limited to:

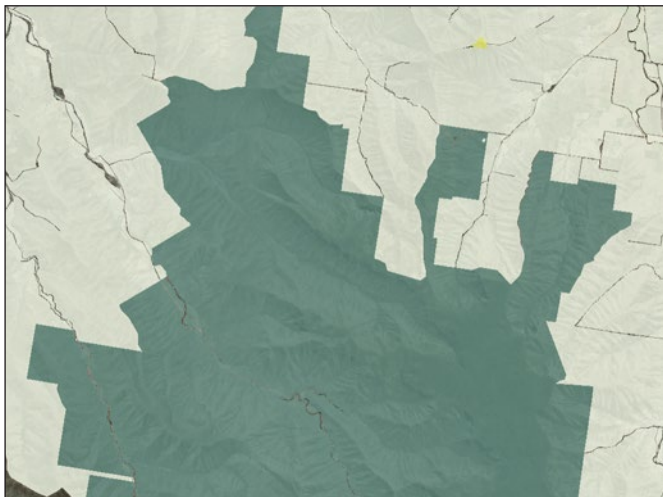
- The Conservation zone includes areas within the Region with the most significant ecological and landscape values including World Heritage Areas, National parks, State Forests, Nature Refuges and significant habitat and wildlife corridors. The biological diversity, ecological processes, ecological connectivity, ecosystem resilience, scenic landscape values and scenic amenity of these areas are protected from development.

- Biological diversity, ecological processes, ecological connectivity and ecosystem resilience is retained through the protection, improvement and management of the land within this zone.
- Land in this zone remains undeveloped and is retained in its natural state with minimal intrusion of built form. All uses are compatible with the environmental significance and protected status of land included in the zone.
- The zone provides for a limited range of activities where environmental values, ecological processes, scenic landscape values and scenic amenity are maintained.
- No additional lots are created within the Conservation zone. Amalgamation of lots is encouraged to maximise the potential use of the land for recreational or conservation purposes.
- New development is only necessary for the use, enjoyment, appreciation, viewing, study and conservation of land within the zone. Recreational uses involve very low impact activities such as walking and nature appreciation.

EXAMPLES OF CONSISTENT USES

All uses consistent with the *Forestry Act* or the *Nature Conservation Act*
 Environment facility
 Nature-based tourism

Outdoor sport and recreation
 Outstation
 Park
 Permanent plantation



Zone: Conservation

WE WOULD LIKE TO SEE

Permanent Plantation



Park

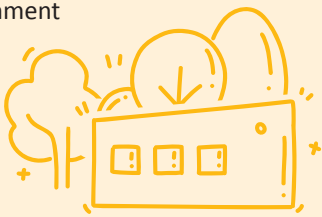


Outstation



WE WILL CONSIDER

Environment Facility



Nature-based Tourism

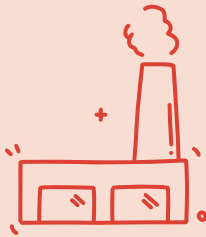


Outdoor Sport and Recreation



WE WOULD PREFER NOT TO SEE

Industry



Dwelling House

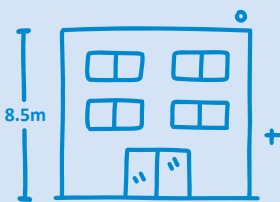


Vegetation Clearing

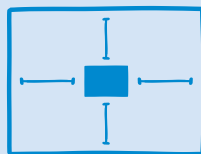


AS PART OF YOUR DEVELOPMENT WE WILL ASSESS

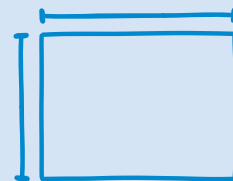
Building Height - **8.5m maximum**



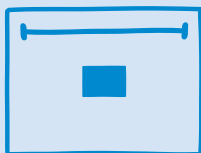
Setbacks - **25m from all Boundaries**



Lot Size - **200ha minimum**
for subdivision



Frontage - **200m minimum**
for subdivision



Water Quality



FOR MORE INFORMATION

Visit: www.lockyervalley.qld.gov.au
Contact: Council's Growth & Policy Team on **1300 005 872**
Email: planningscheme@lvrc.qld.gov.au
Book: [An appointment with a Planning Officer](#)



Scan the QR code to view the draft planning scheme, scheme maps and access the submissions portal.

