



Lockyer Valley Regional Council Draft Planning Scheme

REGIONAL COUNCIL

OM12A Waterways and water resource catchment - Ecosystems overlay map

Water quality ecosystems

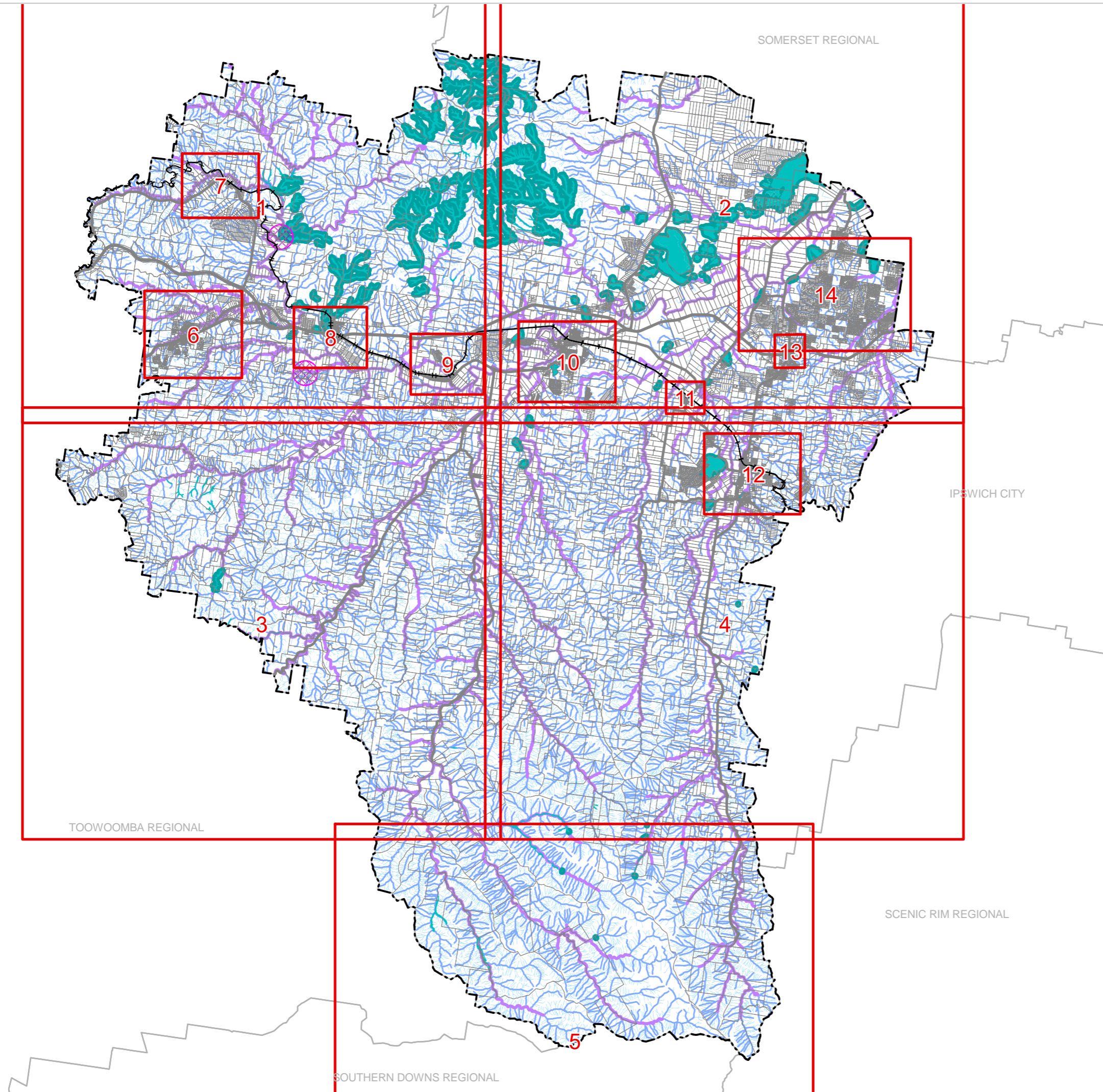
- Wetland
- Waterway - stream order 1 and 2
- Waterway - stream order 3 and greater
- Overland flow path

Separation areas

- Spring separation area
- Wetland separation area

Other Features

- Major Road
- Railway Network
- Cadastral Lots
- Local Government Boundary



NOTE

Refer to online or electronic mapping where layers overlap or labels obstruct the data on the map.

MAP INFORMATION

Based on or contains data sourced from the State Government which gives no warranty in relation to the data (including accuracy, reliability, completeness or suitability) and accepts no liability (including without limitation, liability in negligence) for any loss, damage or costs (including consequential damage) relating to any use of the data.
© Copyright Lockyer Valley Regional Council 2023

DATA SOURCES

Cadastral data weekly - whole of State Queensland, Rail network - Queensland, Baseline roads and tracks - Queensland © State of Queensland (Department of Resources) 2023. Watercourse identification map - springs - Queensland, High ecological significance wetlands - Queensland, High ecological value waters - Queensland, Regulated vegetation defined watercourse - Queensland © State of Queensland (Department of Environment and Science) 2023.

Gazettal Date: 00/00/0000

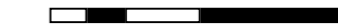
Geocentric Datum of Australia (GDA2020 / MGA zone 56)



Date: 19/6/2023

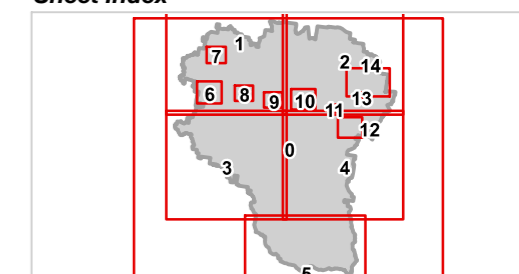
Approx Scale @ A3: 1:250,000

0 10



kilometres

Sheet Index



OM12A Waterways and water resource catchment overlay Index - 00



Lockyer Valley Regional Council Draft Planning Scheme

REGIONAL COUNCIL

OM12A Waterways and water resource catchment - Ecosystems overlay map

Water quality ecosystems

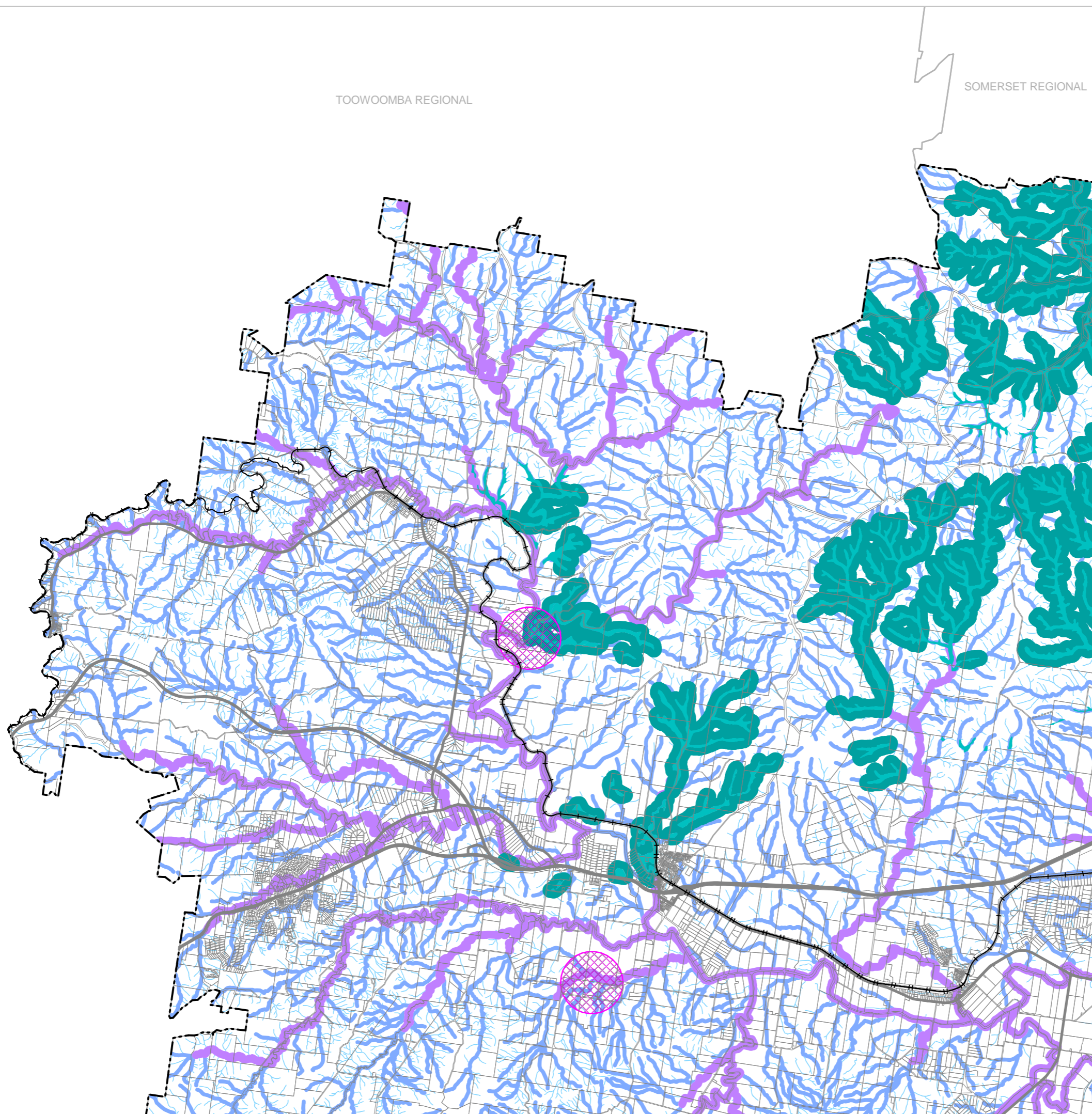
- Wetland
- Waterway - stream order 1 and 2
- Waterway - stream order 3 and greater
- Overland flow path

Separation areas

- Spring separation area
- Wetland separation area

Other Features

- Major Road
- Railway Network
- Cadastral_Lots
- Local Government Boundary



NOTE

Refer to online or electronic mapping where layers overlap or labels obstruct the data on the map.

MAP INFORMATION

Based on or contains data sourced from the State Government which gives no warranty in relation to the data (including accuracy, reliability, completeness or suitability) and accepts no liability (including without limitation, liability in negligence) for any loss, damage or costs (including consequential damage) relating to any use of the data.
© Copyright Lockyer Valley Regional Council 2023

DATA SOURCES

Cadastral data weekly - whole of State Queensland, Rail network - Queensland, Baseline roads and tracks - Queensland: © State of Queensland (Department of Resources) 2023. Watercourse identification map - springs - Queensland, High ecological significance wetlands - Queensland, High ecological value waters - Queensland, Regulated vegetation defined watercourse - Queensland: © State of Queensland (Department of Environment and Science) 2023.

Gazettal Date: 00/00/0000

Geocentric Datum of Australia (GDA2020 / MGA zone 56)

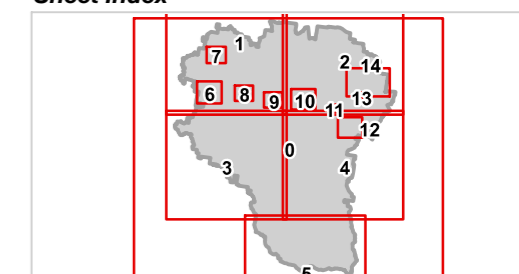


Date: 19/6/2023

Approx Scale @ A3: 1:100,000



Sheet Index



OM12A Waterways and water resource catchment overlay
LGA north-west - 01







REGIONAL COUNCIL



SOMERSET REGIONAL

OM12A Waterways and water resource catchment - Ecosystems overlay map

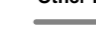
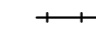


Water quality ecosystems

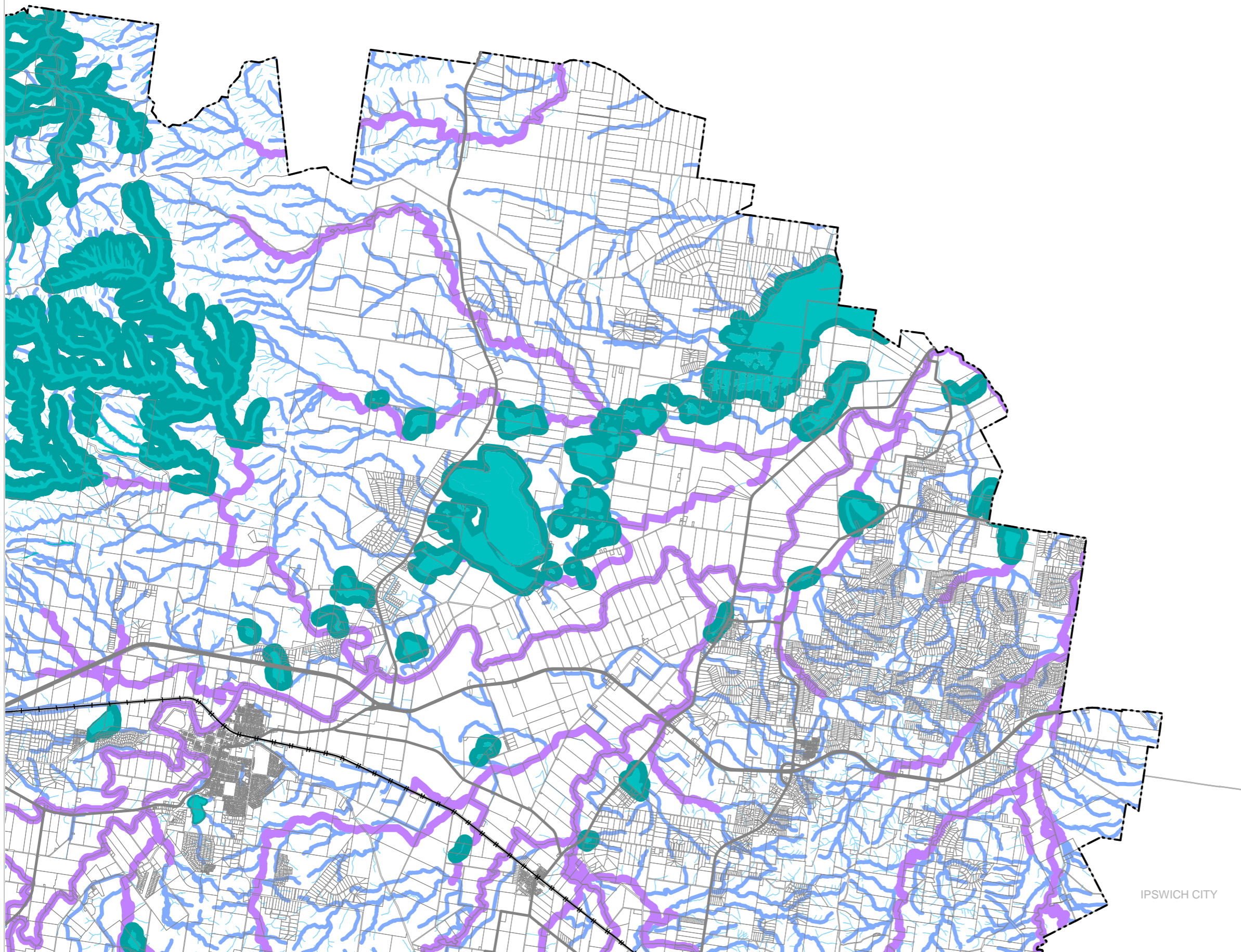
-  Wetland
-  Waterway - stream order 1 and 2
-  Waterway - stream order 3 and greater
-  Overland flow path

Separation areas

-  Spring separation area
-  Wetland separation area

Other Features

-  Major Road
-  Railway Network
-  Cadastral_Lots
-  Local Government Boundary



NOTE

Refer to online or electronic mapping where layers overlap or labels obstruct the data on the map.

MAP INFORMATION

Based on or contains data sourced from the State Government which gives no warranty in relation to the data (including accuracy, reliability, completeness or suitability) and accepts no liability (including without limitation, liability in negligence) for any loss, damage or costs (including consequential damage) relating to any use of the data.
© Copyright Lockyer Valley Regional Council 2023

DATA SOURCES

Cadastral data weekly - whole of State Queensland, Rail network - Queensland, Baseline roads and tracks - Queensland: © State of Queensland (Department of Resources) 2023. Watercourse identification map - springs - Queensland, High ecological significance wetlands - Queensland, High ecological value waters - Queensland, Regulated vegetation defined watercourse - Queensland: © State of Queensland (Department of Environment and Science) 2023.

Gazettal Date: 00/00/0000

Geocentric Datum of Australia (GDA2020 / MGA zone 56)

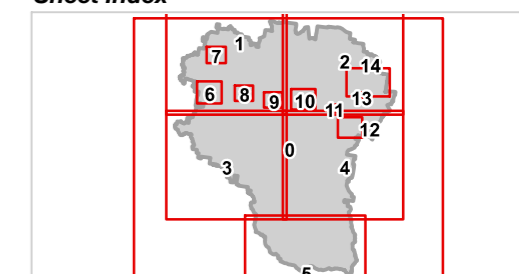


Date: 19/6/2023

Approx Scale @ A3: 1:100,000



Sheet Index











REGIONAL COUNCIL

OM12A Waterways and water resource catchment - Ecosystems overlay map

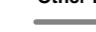
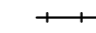


Water quality ecosystems

-  Wetland
-  Waterway - stream order 1 and 2
-  Waterway - stream order 3 and greater
-  Overland flow path

Separation areas

-  Spring separation area
-  Wetland separation area

Other Features

-  Major Road
-  Railway Network
-  Cadastral_Lots
-  Local Government Boundary

NOTE

Refer to online or electronic mapping where layers overlap or labels obstruct the data on the map.

MAP INFORMATION

Based on or contains data sourced from the State Government which gives no warranty in relation to the data (including accuracy, reliability, completeness or suitability) and accepts no liability (including without limitation, liability in negligence) for any loss, damage or costs (including consequential damage) relating to any use of the data.
© Copyright Lockyer Valley Regional Council 2023

DATA SOURCES

Cadastral data weekly - whole of State Queensland, Rail network - Queensland, Baseline roads and tracks - Queensland: © State of Queensland (Department of Resources) 2023. Watercourse identification map - springs - Queensland, High ecological significance wetlands - Queensland, High ecological value waters - Queensland, Regulated vegetation defined watercourse - Queensland: © State of Queensland (Department of Environment and Science) 2023.

Gazettal Date: 00/00/0000

Geocentric Datum of Australia (GDA2020 / MGA zone 56)

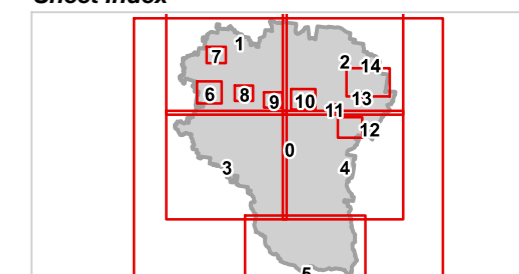


Date: 19/6/2023

Approx Scale @ A3: 1:100,000



Sheet Index



TOOWOOMBA REGIONAL



REGIONAL COUNCIL

OM12A Waterways and water resource catchment - Ecosystems overlay map

Water quality ecosystems

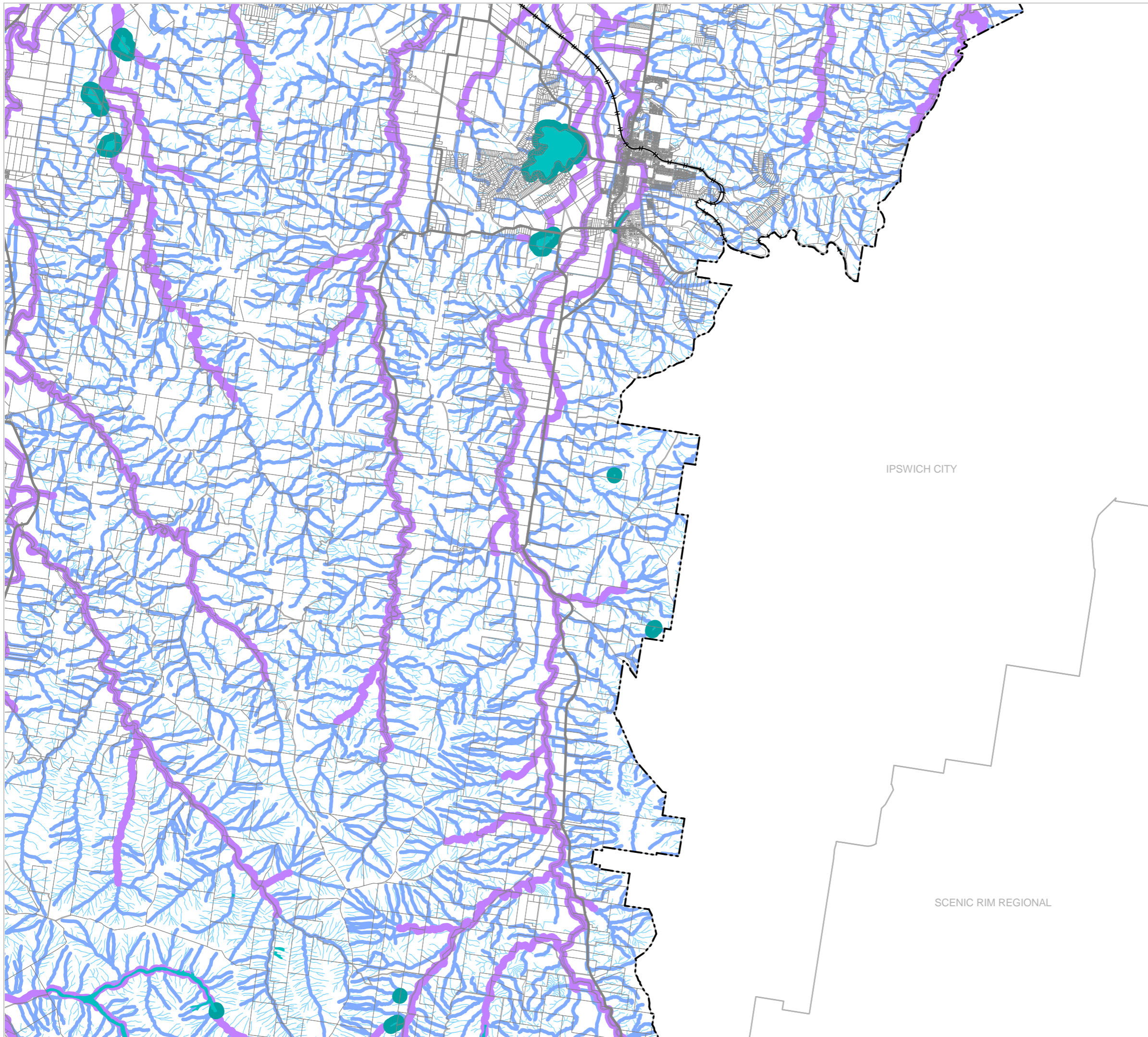
- Wetland
- Waterway - stream order 1 and 2
- Waterway - stream order 3 and greater
- Overland flow path

Separation areas

- Spring separation area
- Wetland separation area

Other Features

- Major Road
- Railway Network
- Cadastral_Lots
- Local Government Boundary



IPSWICH CITY

SCENIC RIM REGIONAL

NOTE

Refer to online or electronic mapping where layers overlap or labels obstruct the data on the map.

MAP INFORMATION

Based on or contains data sourced from the State Government which gives no warranty in relation to the data (including accuracy, reliability, completeness or suitability) and accepts no liability (including without limitation, liability in negligence) for any loss, damage or costs (including consequential damage) relating to any use of the data.
© Copyright Lockyer Valley Regional Council 2023

DATA SOURCES

Cadastral data weekly - whole of State Queensland, Rail network - Queensland, Baseline roads and tracks - Queensland © State of Queensland (Department of Resources) 2023. Watercourse identification map - springs - Queensland, High ecological significance wetlands - Queensland, High ecological value waters - Queensland, Regulated vegetation defined watercourse - Queensland © State of Queensland (Department of Environment and Science) 2023.

Gazettal Date: 00/00/0000

Geocentric Datum of Australia (GDA2020 / MGA zone 56)

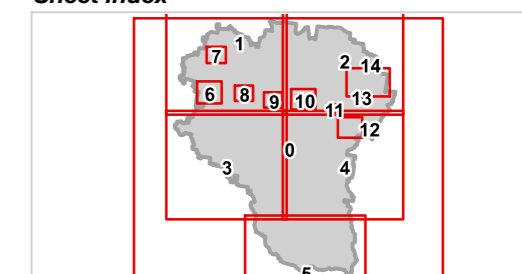


Date: 19/6/2023

Approx Scale @ A3: 1:100,000



Sheet Index





Lockyer Valley Regional Council Draft Planning Scheme

REGIONAL COUNCIL

OM12A Waterways and water resource catchment - Ecosystems overlay map

Water quality ecosystems

- Wetland
- Waterway - stream order 1 and 2
- Waterway - stream order 3 and greater
- Overland flow path

Separation areas

- Spring separation area
- Wetland separation area

Other Features

- Major Road
- Railway Network
- Cadastral_Lots
- Local Government Boundary

NOTE

Refer to online or electronic mapping where layers overlap or labels obstruct the data on the map.

MAP INFORMATION

Based on or contains data sourced from the State Government which gives no warranty in relation to the data (including accuracy, reliability, completeness or suitability) and accepts no liability (including without limitation, liability in negligence) for any loss, damage or costs (including consequential damage) relating to any use of the data.
© Copyright Lockyer Valley Regional Council 2023

DATA SOURCES

Cadastral data weekly - whole of State Queensland, Rail network - Queensland, Baseline roads and tracks - Queensland © State of Queensland (Department of Resources) 2023. Watercourse identification map - springs - Queensland, High ecological significance wetlands - Queensland, High ecological value waters - Queensland, Regulated vegetation defined watercourse - Queensland © State of Queensland (Department of Environment and Science) 2023.

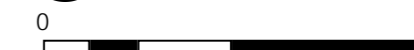
Gazettal Date: 00/00/0000

Geocentric Datum of Australia (GDA2020 / MGA zone 56)



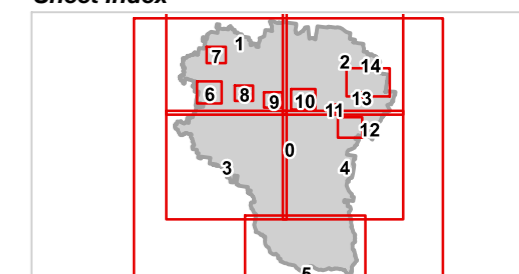
Date:19/6/2023

Approx Scale @ A3: 1:100,000

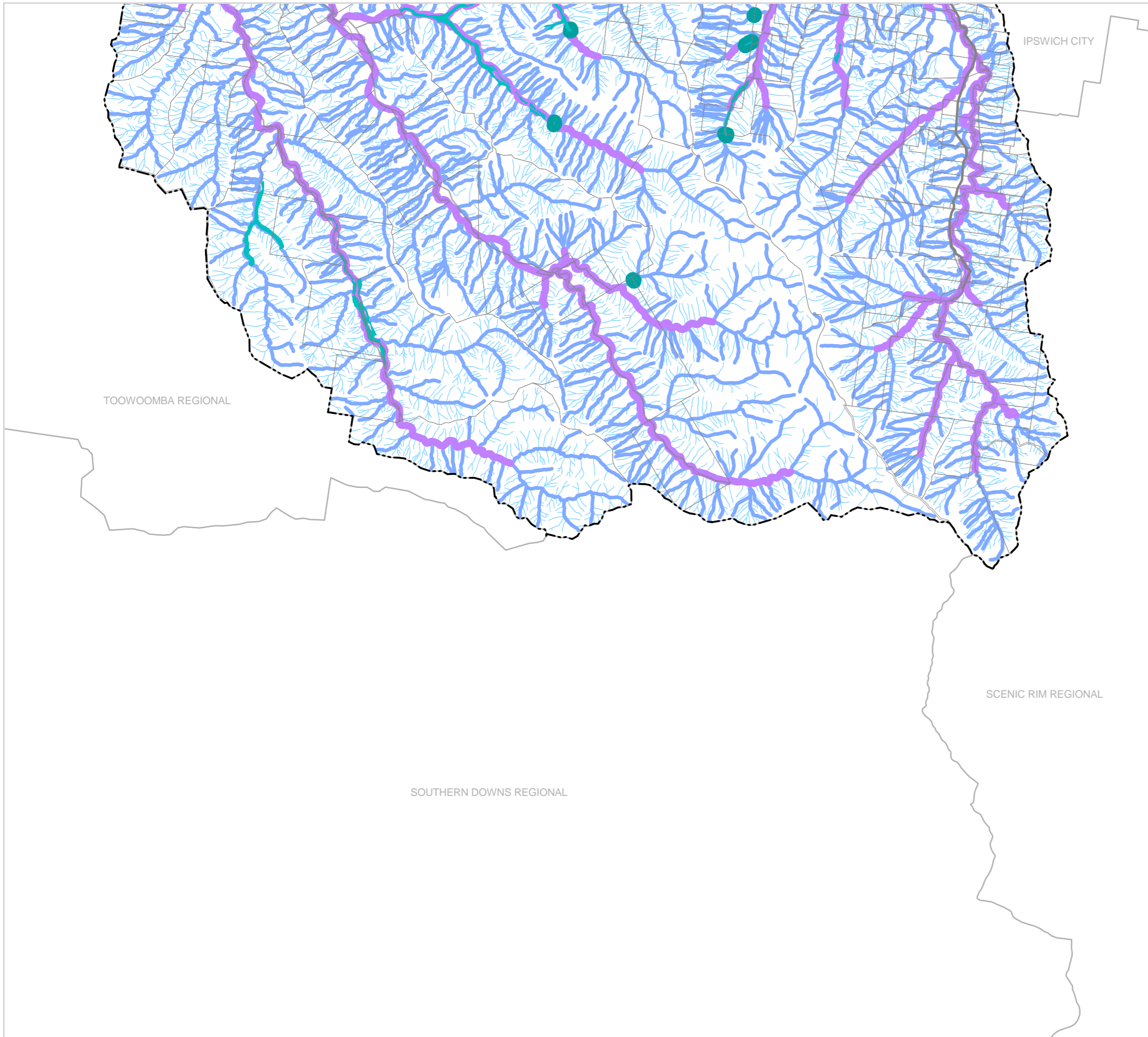


kilometres

Sheet Index



OM12A Waterways and water resource catchment overlay
LGA south - 05











REGIONAL COUNCIL

**OM12A Waterways and water resource
catchment - Ecosystems overlay map**

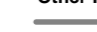
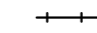


Water quality ecosystems

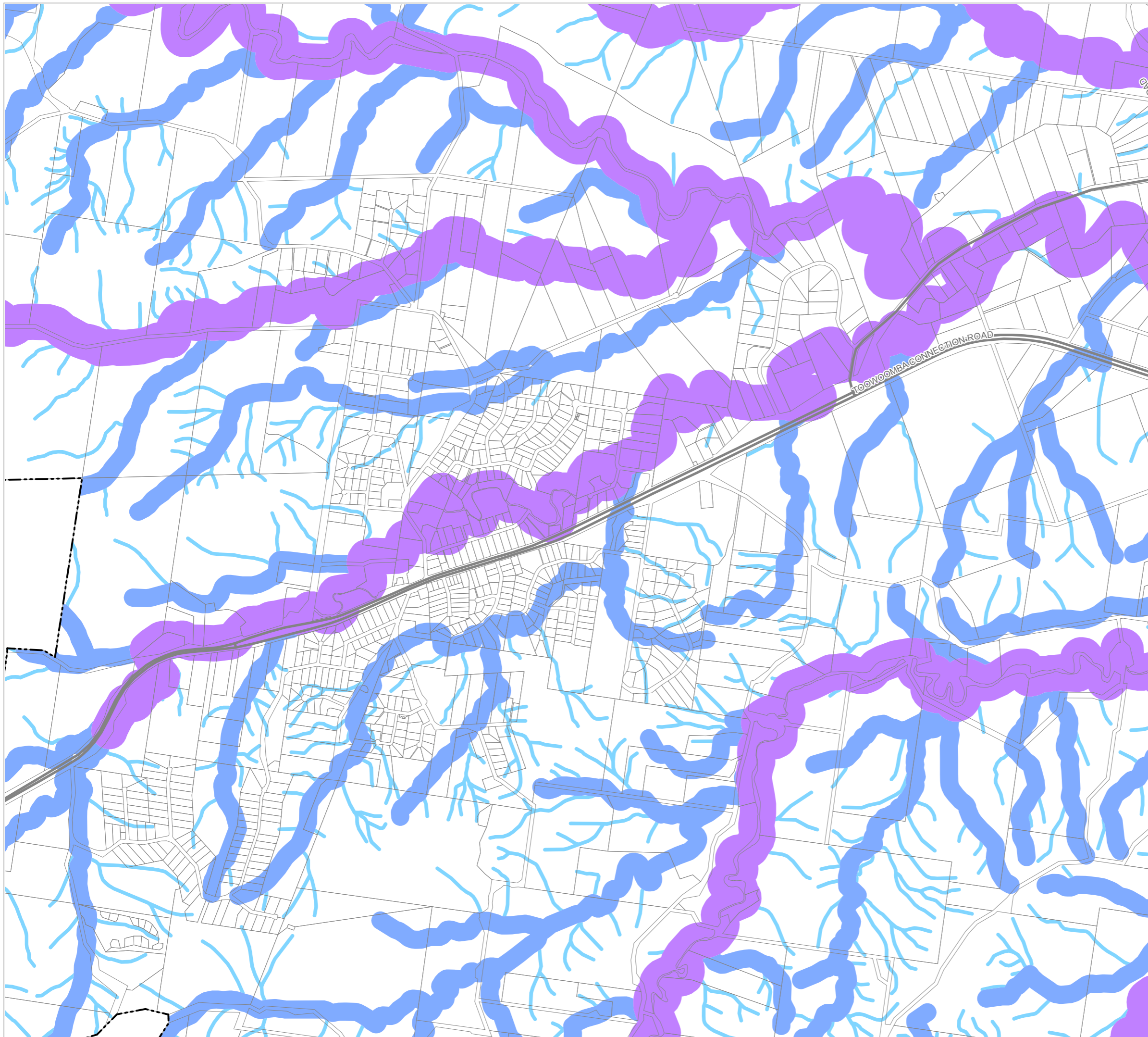
-  Wetland
-  Waterway - stream order 1 and 2
-  Waterway - stream order 3 and greater
-  Overland flow path

Separation areas

-  Spring separation area
-  Wetland separation area

Other Features

-  Major Road
-  Railway Network
-  Cadastral_Lots
-  Local Government Boundary



NOTE

Refer to online or electronic mapping where layers overlap or labels obstruct the data on the map.

MAP INFORMATION

Based on or contains data sourced from the State Government which gives no warranty in relation to the data (including accuracy, reliability, completeness or suitability) and accepts no liability (including without limitation, liability in negligence) for any loss, damage or costs (including consequential damage) relating to any use of the data.
© Copyright Lockyer Valley Regional Council 2023

DATA SOURCES

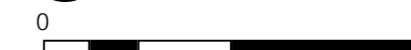
Cadastral data weekly - whole of State Queensland, Rail network - Queensland, Baseline roads and tracks - Queensland © State of Queensland (Department of Resources) 2023. Watercourse identification map - springs - Queensland, High ecological significance wetlands - Queensland, High ecological value waters - Queensland, Regulated vegetation defined watercourse - Queensland © State of Queensland (Department of Environment and Science) 2023.

Gazettal Date: 00/00/0000

Geocentric Datum of Australia (GDA2020 / MGA zone 56)

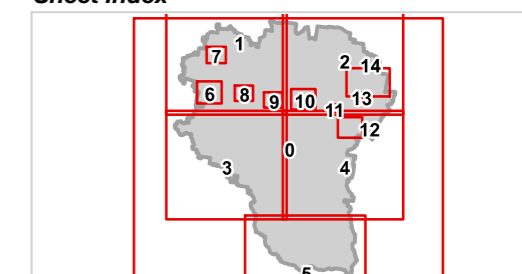
Date: 19/6/2023

Approx Scale @ A3: 1:20,000



kilometres

Sheet Index





REGIONAL COUNCIL

OM12A Waterways and water resource catchment - Ecosystems overlay map

Water quality ecosystems

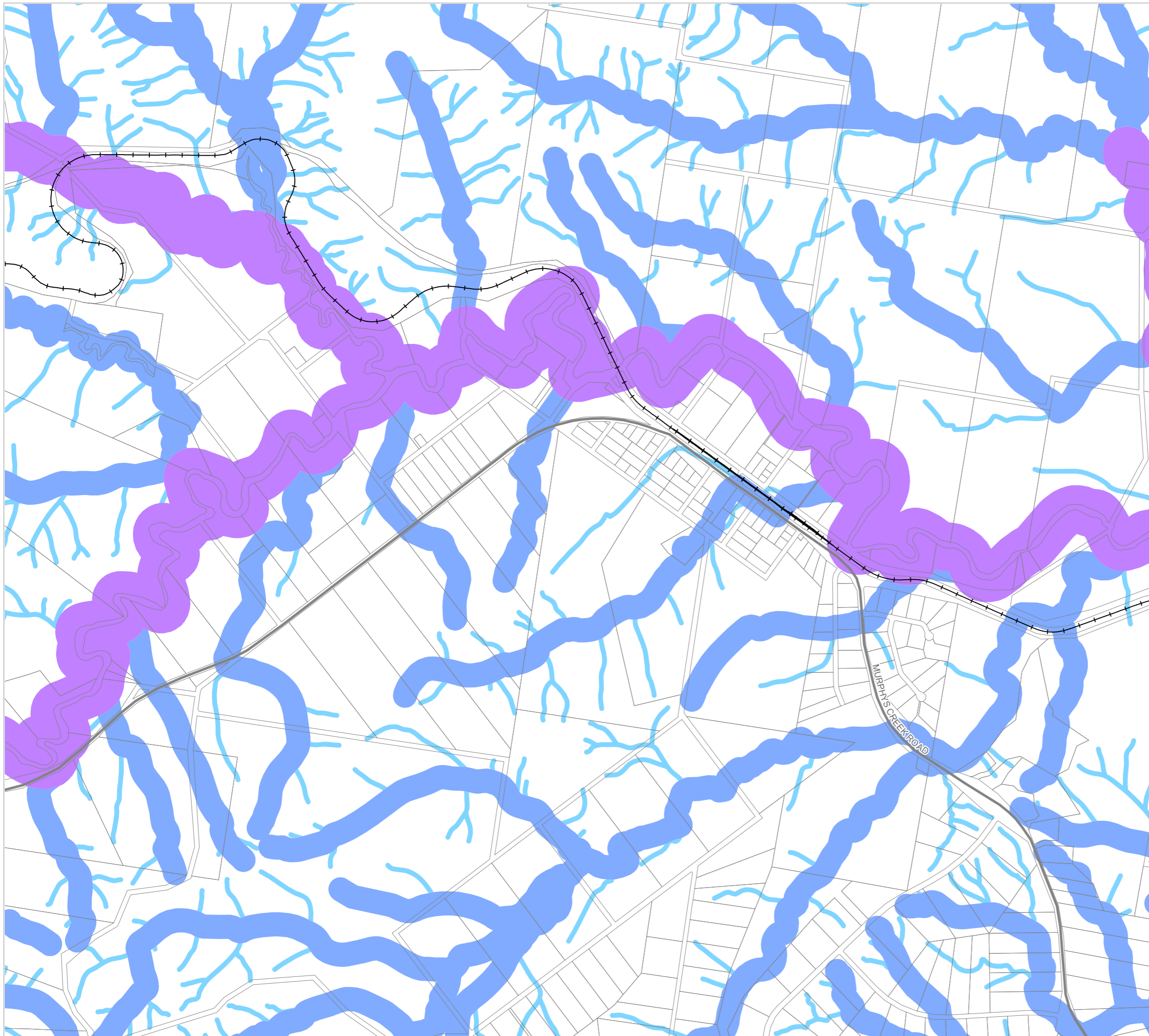
- Wetland
- Waterway - stream order 1 and 2
- Waterway - stream order 3 and greater
- Overland flow path

Separation areas

- Spring separation area
- Wetland separation area

Other Features

- Major Road
- Railway Network
- Cadastral_Lots
- Local Government Boundary



NOTE

Refer to online or electronic mapping where layers overlap or labels obstruct the data on the map.

MAP INFORMATION

Based on or contains data sourced from the State Government which gives no warranty in relation to the data (including accuracy, reliability, completeness or suitability) and accepts no liability (including without limitation, liability in negligence) for any loss, damage or costs (including consequential damage) relating to any use of the data.
© Copyright Lockyer Valley Regional Council 2023

DATA SOURCES

Cadastral data weekly - whole of State Queensland, Rail network - Queensland, Baseline roads and tracks - Queensland: © State of Queensland (Department of Resources) 2023. Watercourse identification map - springs - Queensland, High ecological significance wetlands - Queensland, High ecological value waters - Queensland, Regulated vegetation defined watercourse - Queensland: © State of Queensland (Department of Environment and Science) 2023.

Gazettal Date: 00/00/0000

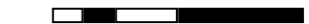
Geocentric Datum of Australia (GDA2020 / MGA zone 56)



Date: 19/6/2023

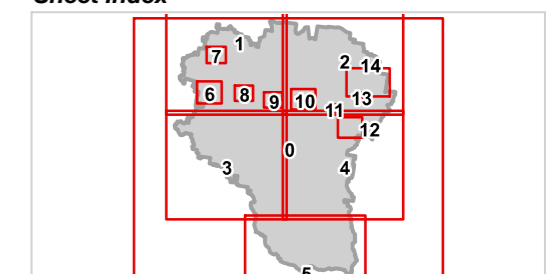
Approx Scale @ A3: 1:15,000

0 0.5



kilometres

Sheet Index











REGIONAL COUNCIL

**OM12A Waterways and water resource
catchment - Ecosystems overlay map**


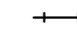


Water quality ecosystems

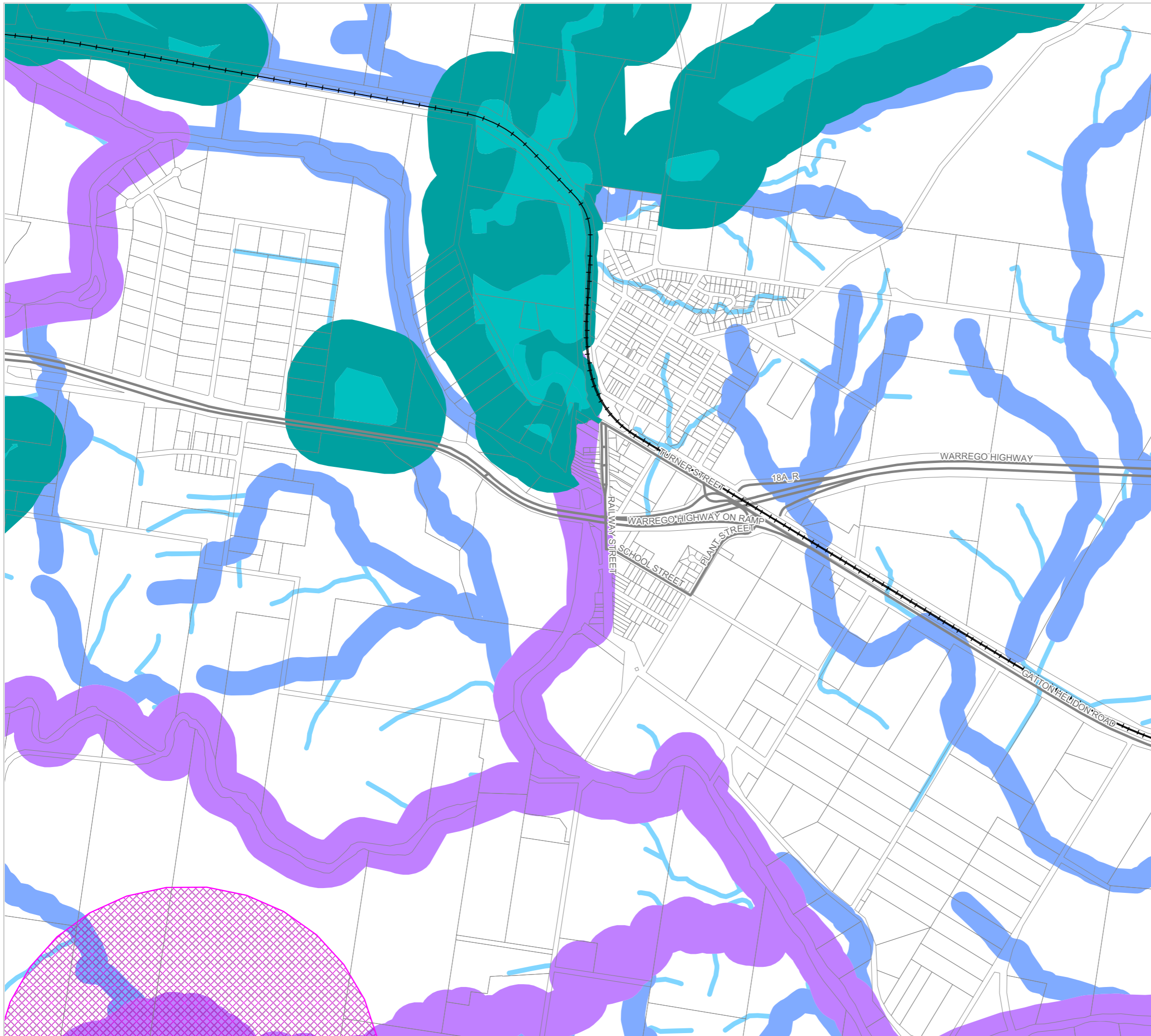
-  Wetland
-  Waterway - stream order 1 and 2
-  Waterway - stream order 3 and greater
-  Overland flow path

Separation areas

-  Spring separation area
-  Wetland separation area

Other Features

-  Major Road
-  Railway Network
-  Cadastral Lots
-  Local Government Boundary



NOTE

Refer to online or electronic mapping where layers overlap or labels obstruct the data on the map.

MAP INFORMATION

Based on or contains data sourced from the State Government which gives no warranty in relation to the data (including accuracy, reliability, completeness or suitability) and accepts no liability (including without limitation, liability in negligence) for any loss, damage or costs (including consequential damage) relating to any use of the data.
© Copyright Lockyer Valley Regional Council 2023

DATA SOURCES

Cadastral data weekly - whole of State Queensland, Rail network - Queensland, Baseline roads and tracks - Queensland: © State of Queensland (Department of Resources) 2023. Watercourse identification map - springs - Queensland, High ecological significance wetlands - Queensland, High ecological value waters - Queensland, Regulated vegetation defined watercourse - Queensland: © State of Queensland (Department of Environment and Science) 2023.

Gazettal Date: 00/00/0000

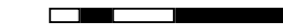
Geocentric Datum of Australia (GDA2020 / MGA zone 56)



Date: 19/6/2023

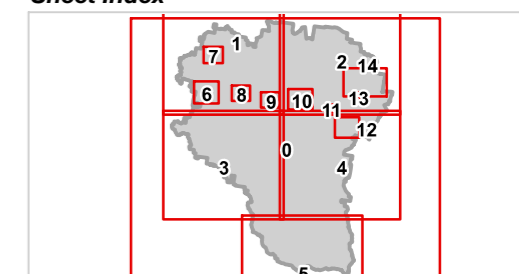
Approx Scale @ A3: 1:15,000

0 0.5



kilometres

Sheet Index





Lockyer Valley Regional Council Draft Planning Scheme

REGIONAL COUNCIL

OM12A Waterways and water resource catchment - Ecosystems overlay map

Water quality ecosystems

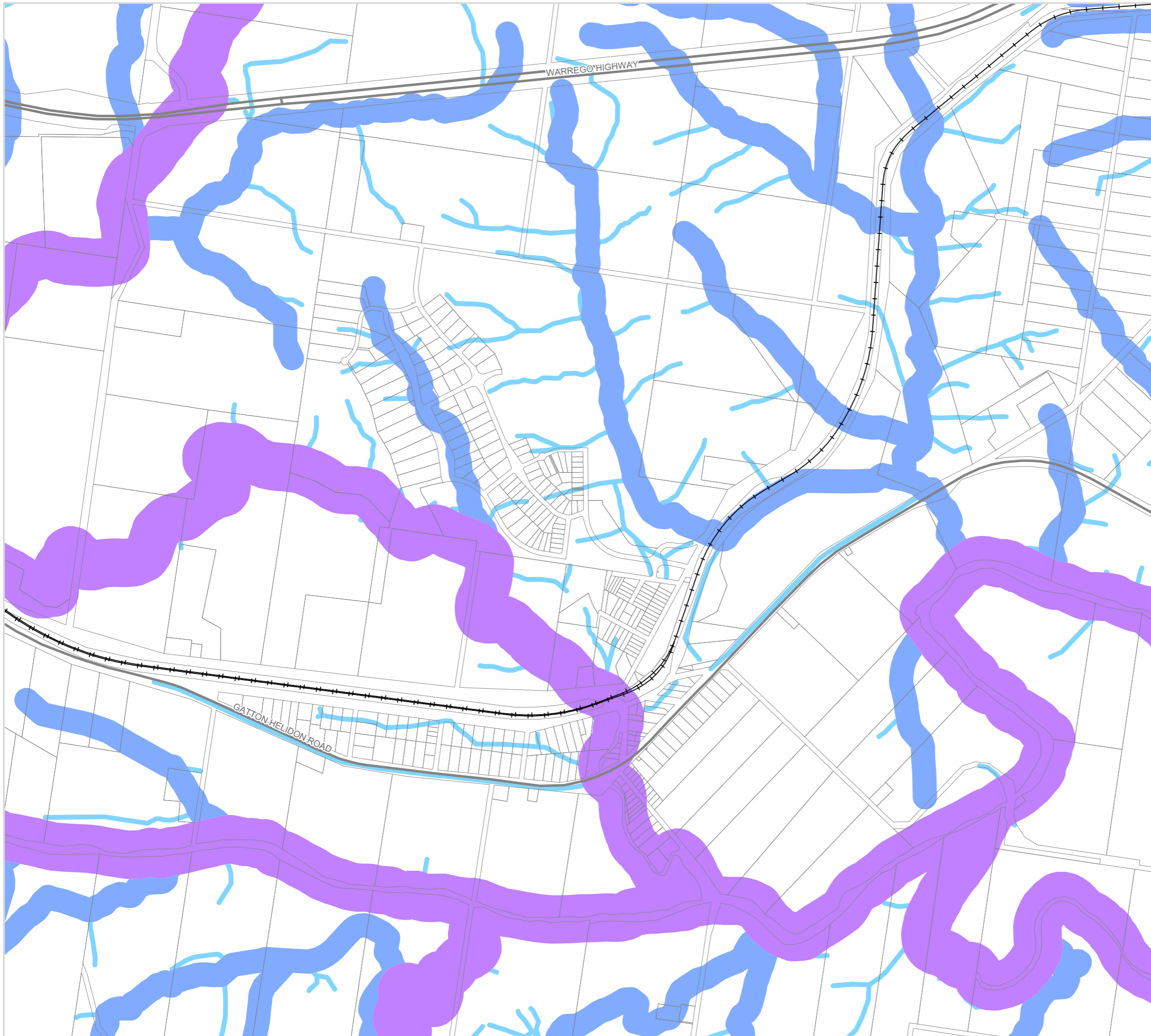
- Wetland
- Waterway - stream order 1 and 2
- Waterway - stream order 3 and greater
- Overland flow path

Separation areas

- Spring separation area
- Wetland separation area

Other Features

- Major Road
- Railway Network
- Cadastral_Lots
- Local Government Boundary



NOTE

Refer to online or electronic mapping where layers overlap or labels obstruct the data on the map.

MAP INFORMATION

Based on or contains data sourced from the State Government which gives no warranty in relation to the data (including accuracy, reliability, completeness or suitability) and accepts no liability (including without limitation, liability in negligence) for any loss, damage or costs (including consequential damage) relating to any use of the data.
© Copyright Lockyer Valley Regional Council 2023

DATA SOURCES

Cadastral data weekly - whole of State Queensland, Rail network - Queensland, Baseline roads and tracks - Queensland: © State of Queensland (Department of Resources) 2023. Watercourse identification map - springs - Queensland, High ecological significance wetlands - Queensland, High ecological value waters - Queensland, Regulated vegetation defined watercourse - Queensland: © State of Queensland (Department of Environment and Science) 2023.

Gazettal Date: 00/00/0000

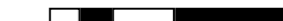
Geocentric Datum of Australia (GDA2020 / MGA zone 56)



Date: 19/6/2023

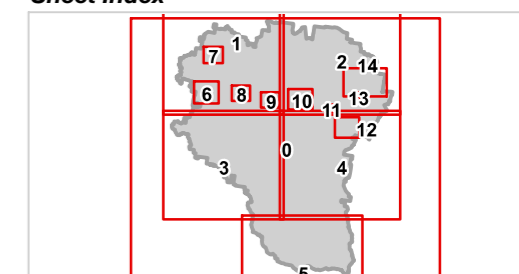
Approx Scale @ A3: 1:15,000

0 0.5



kilometres

Sheet Index



OM12A Waterways and water resource catchment overlay
Grantham - 09







Lockyer Valley Regional Council Draft Planning Scheme



REGIONAL COUNCIL

OM12A Waterways and water resource catchment - Ecosystems overlay map


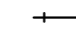

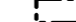
Water quality ecosystems

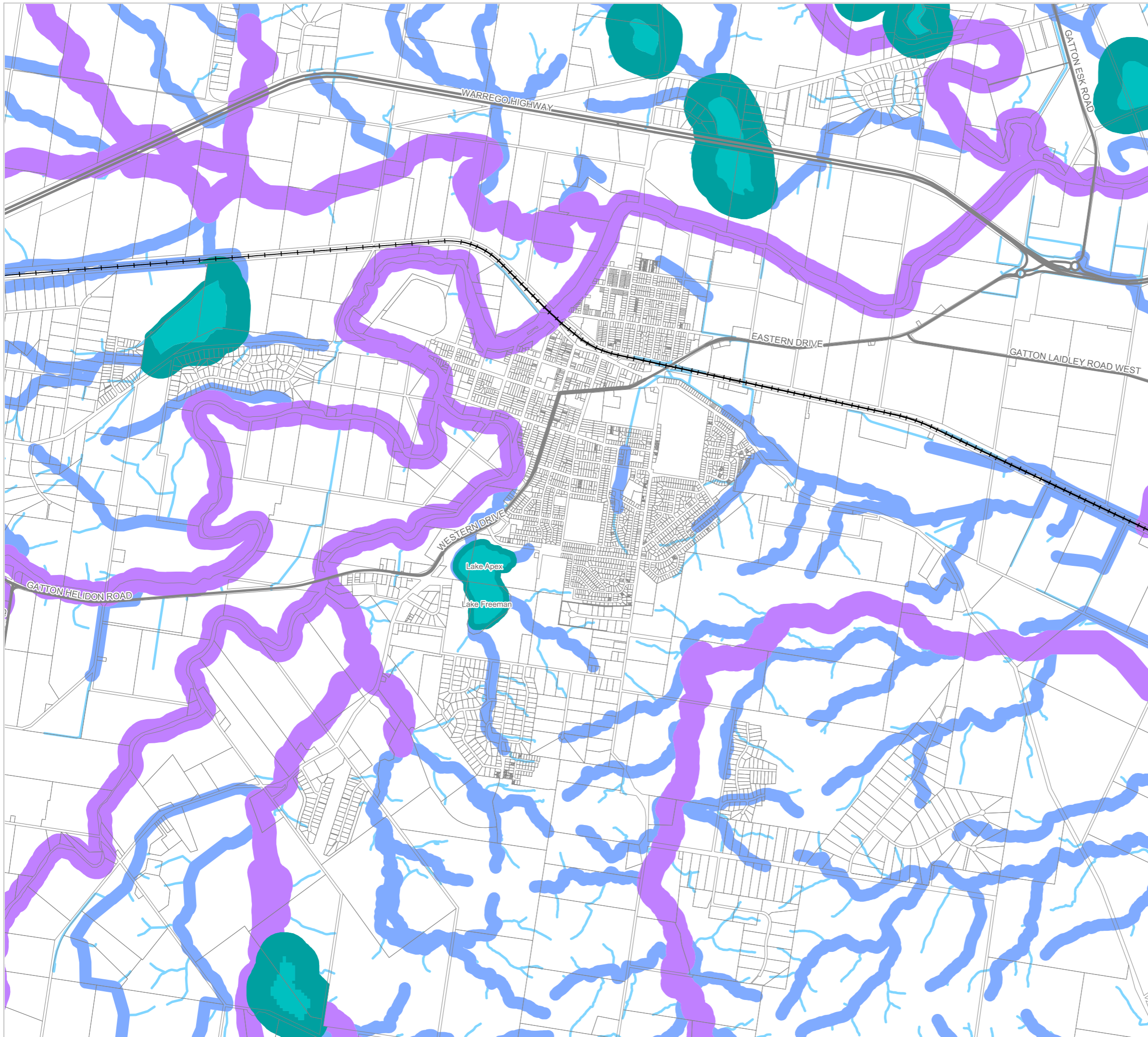
-  Wetland
-  Waterway - stream order 1 and 2
-  Waterway - stream order 3 and greater
-  Overland flow path

Separation areas

-  Spring separation area
-  Wetland separation area

Other Features

-  Major Road
-  Railway Network
-  Cadastral Lots
-  Local Government Boundary



NOTE

Refer to online or electronic mapping where layers overlap or labels obstruct the data on the map.

MAP INFORMATION

Based on or contains data sourced from the State Government which gives no warranty in relation to the data (including accuracy, reliability, completeness or suitability) and accepts no liability (including without limitation, liability in negligence) for any loss, damage or costs (including consequential damage) relating to any use of the data.
© Copyright Lockyer Valley Regional Council 2023

DATA SOURCES

Cadastral data weekly - whole of State Queensland, Rail network - Queensland, Baseline roads and tracks - Queensland © State of Queensland (Department of Resources) 2023. Watercourse identification map - springs - Queensland, High ecological significance wetlands - Queensland, High ecological value waters - Queensland, Regulated vegetation defined watercourse - Queensland © State of Queensland (Department of Environment and Science) 2023.

Gazettal Date: 00/00/0000

Geocentric Datum of Australia (GDA2020 / MGA zone 56)



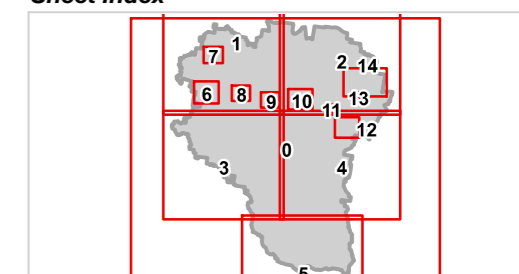
Date: 19/6/2023

Approx Scale @ A3: 1:30,000



kilometres

Sheet Index



OM12A Waterways and water resource catchment overlay
Gattton - 10



Lockyer Valley Regional Council Draft Planning Scheme

REGIONAL COUNCIL

OM12A Waterways and water resource catchment - Ecosystems overlay map

Water quality ecosystems

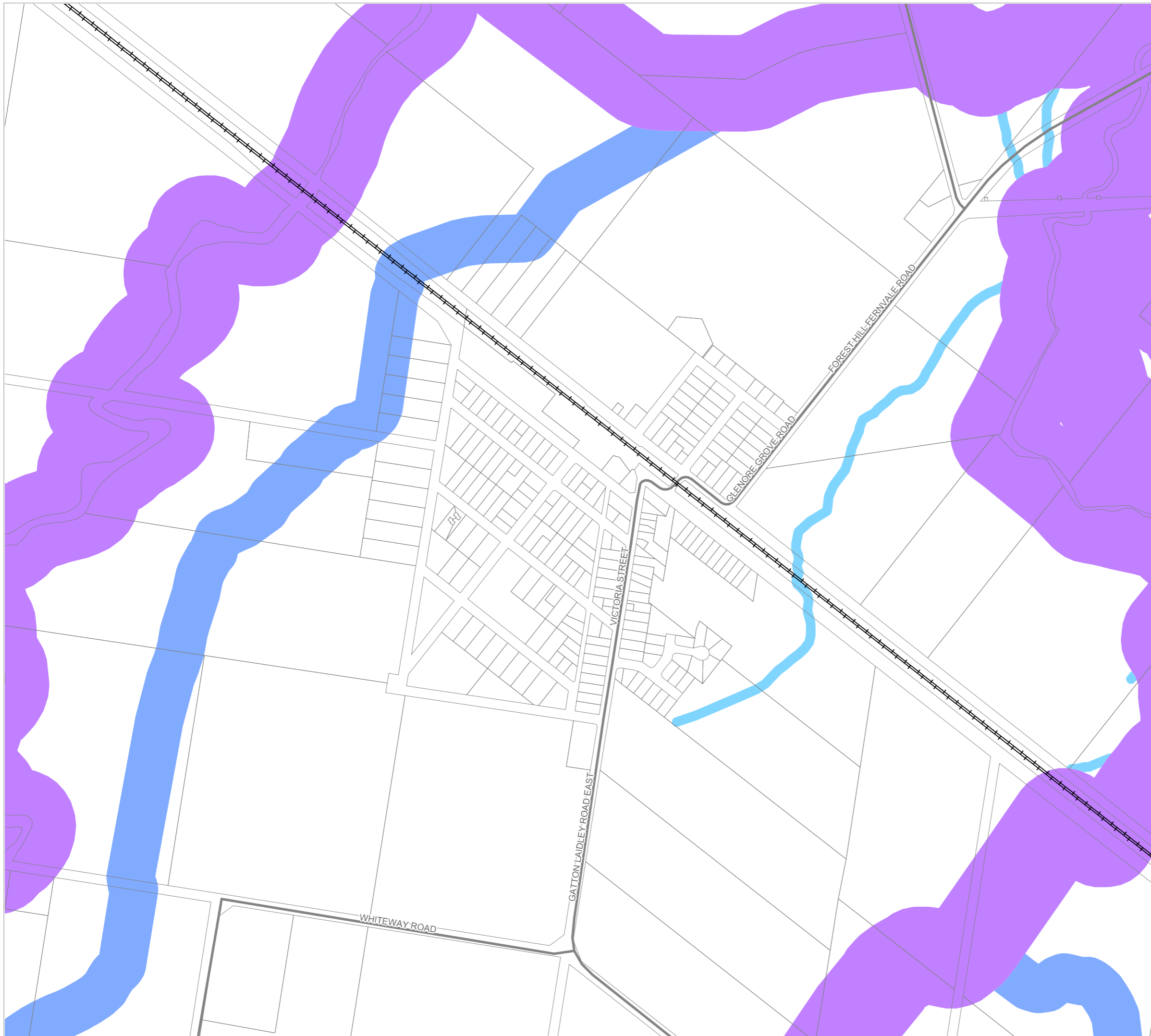
- Wetland
- Waterway - stream order 1 and 2
- Waterway - stream order 3 and greater
- Overland flow path

Separation areas

- Spring separation area
- Wetland separation area

Other Features

- Major Road
- Railway Network
- Cadastral_Lots
- Local Government Boundary



NOTE

Refer to online or electronic mapping where layers overlap or labels obstruct the data on the map.

MAP INFORMATION

Based on or contains data sourced from the State Government which gives no warranty in relation to the data (including accuracy, reliability, completeness or suitability) and accepts no liability (including without limitation, liability in negligence) for any loss, damage or costs (including consequential damage) relating to any use of the data.
© Copyright Lockyer Valley Regional Council 2023

DATA SOURCES

Cadastral data weekly - whole of State Queensland, Rail network - Queensland, Baseline roads and tracks - Queensland: © State of Queensland (Department of Resources) 2023. Watercourse identification map - springs - Queensland, High ecological significance wetlands - Queensland, High ecological value waters - Queensland, Regulated vegetation defined watercourse - Queensland: © State of Queensland (Department of Environment and Science) 2023.

Gazettal Date: 00/00/0000

Geocentric Datum of Australia (GDA2020 / MGA zone 56)



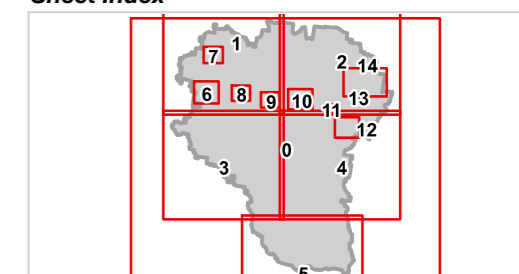
Date: 19/6/2023

Approx Scale @ A3: 1:7,500



kilometres

Sheet Index



OM12A Waterways and water resource catchment overlay
Forest Hill - 11



REGIONAL COUNCIL

OM12A Waterways and water resource catchment - Ecosystems overlay map

Water quality ecosystems

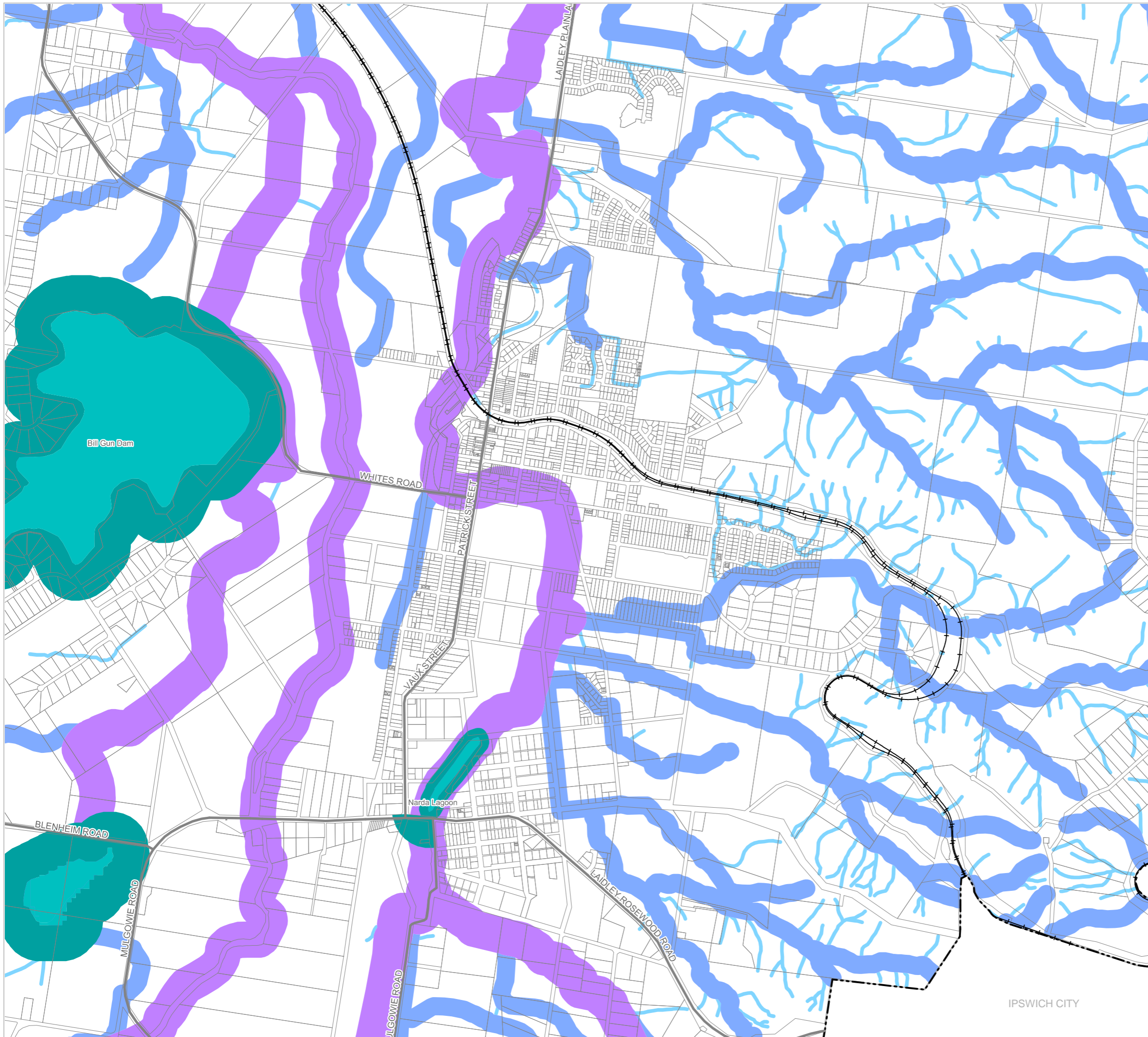
- Wetland
- Waterway - stream order 1 and 2
- Waterway - stream order 3 and greater
- Overland flow path

Separation areas

- Spring separation area
- Wetland separation area

Other Features

- Major Road
- Railway Network
- Cadastral_Lots
- Local Government Boundary



NOTE

Refer to online or electronic mapping where layers overlap or labels obstruct the data on the map.

MAP INFORMATION

Based on or contains data sourced from the State Government which gives no warranty in relation to the data (including accuracy, reliability, completeness or suitability) and accepts no liability (including without limitation, liability in negligence) for any loss, damage or costs (including consequential damage) relating to any use of the data.
© Copyright Lockyer Valley Regional Council 2023

DATA SOURCES

Cadastral data weekly - whole of State Queensland, Rail network - Queensland, Baseline roads and tracks - Queensland © State of Queensland (Department of Resources) 2023. Watercourse identification map - springs - Queensland, High ecological significance wetlands - Queensland, High ecological value waters - Queensland, Regulated vegetation defined watercourse - Queensland © State of Queensland (Department of Environment and Science) 2023.

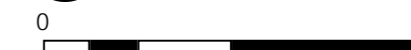
Gazettal Date: 00/00/0000

Geocentric Datum of Australia (GDA2020 / MGA zone 56)



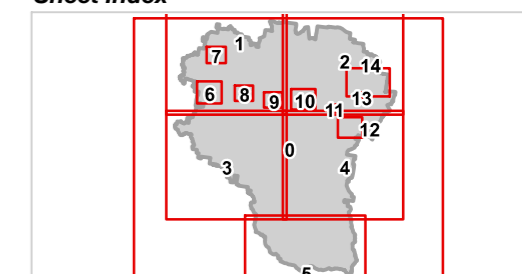
Date: 19/6/2023

Approx Scale @ A3: 1:20,000



kilometres

Sheet Index





REGIONAL COUNCIL

OM12A Waterways and water resource catchment - Ecosystems overlay map

Water quality ecosystems

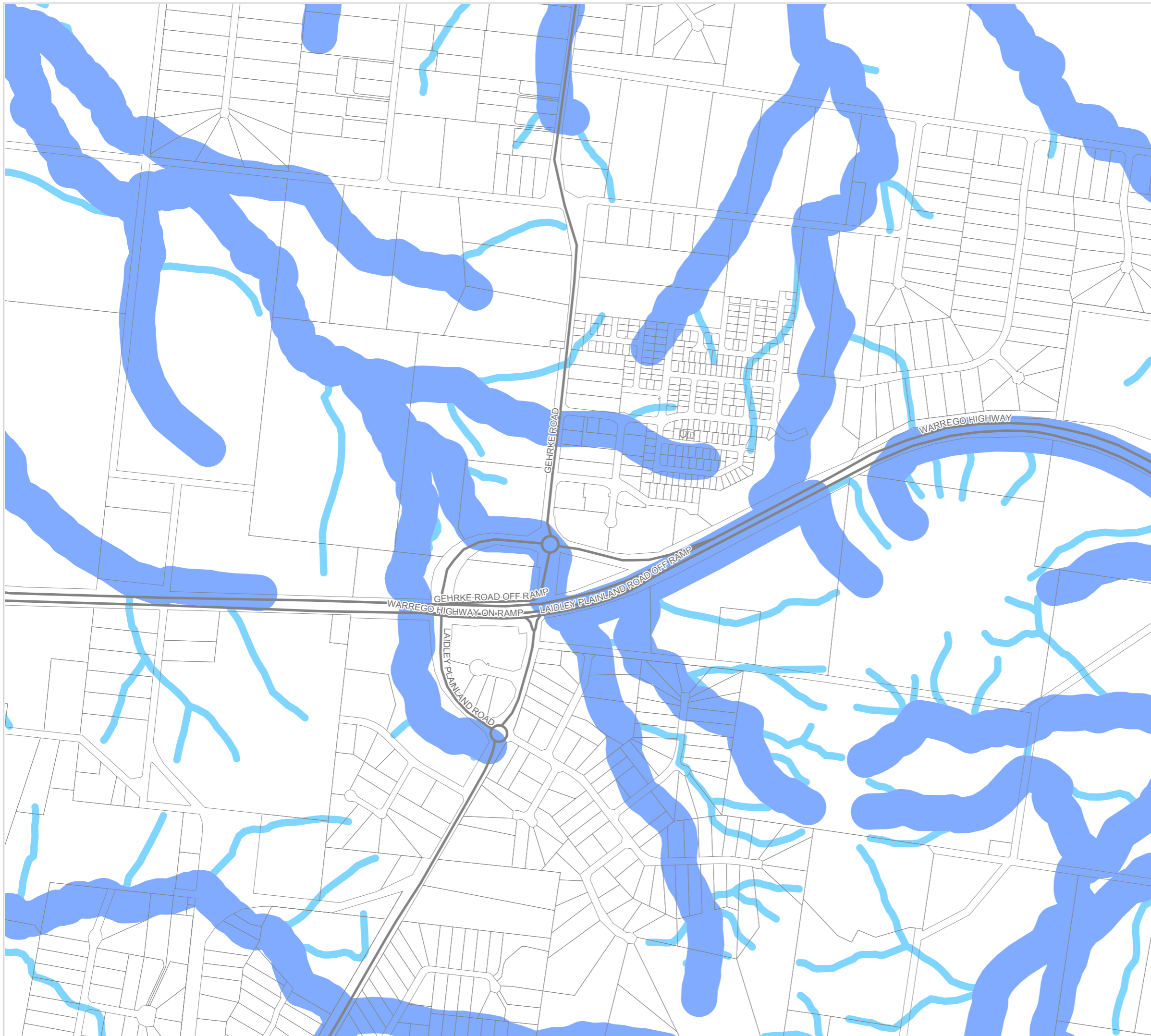
- Wetland
- Waterway - stream order 1 and 2
- Waterway - stream order 3 and greater
- Overland flow path

Separation areas

- Spring separation area
- Wetland separation area

Other Features

- Major Road
- Railway Network
- Cadastral_Lots
- Local Government Boundary



NOTE

Refer to online or electronic mapping where layers overlap or labels obstruct the data on the map.

MAP INFORMATION

Based on or contains data sourced from the State Government which gives no warranty in relation to the data (including accuracy, reliability, completeness or suitability) and accepts no liability (including without limitation, liability in negligence) for any loss, damage or costs (including consequential damage) relating to any use of the data.
© Copyright Lockyer Valley Regional Council 2023

DATA SOURCES

Cadastral data weekly - whole of State Queensland, Rail network - Queensland, Baseline roads and tracks - Queensland: © State of Queensland (Department of Resources) 2023. Watercourse identification map - springs - Queensland, High ecological significance wetlands - Queensland, High ecological significance waters - Queensland, Regulated vegetation defined watercourse - Queensland: © State of Queensland (Department of Environment and Science) 2023.

Gazettal Date: 00/00/0000

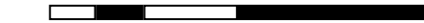
Geocentric Datum of Australia (GDA2020 / MGA zone 56)



Date: 19/6/2023

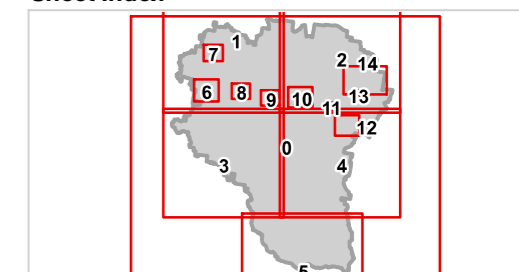
Approx Scale @ A3: 1:10,000

0 0.5



kilometres

Sheet Index





Lockyer Valley Regional Council Draft Planning Scheme

REGIONAL COUNCIL

OM12A Waterways and water resource catchment - Ecosystems overlay map

SOMERSET REGIONAL

Water quality ecosystems

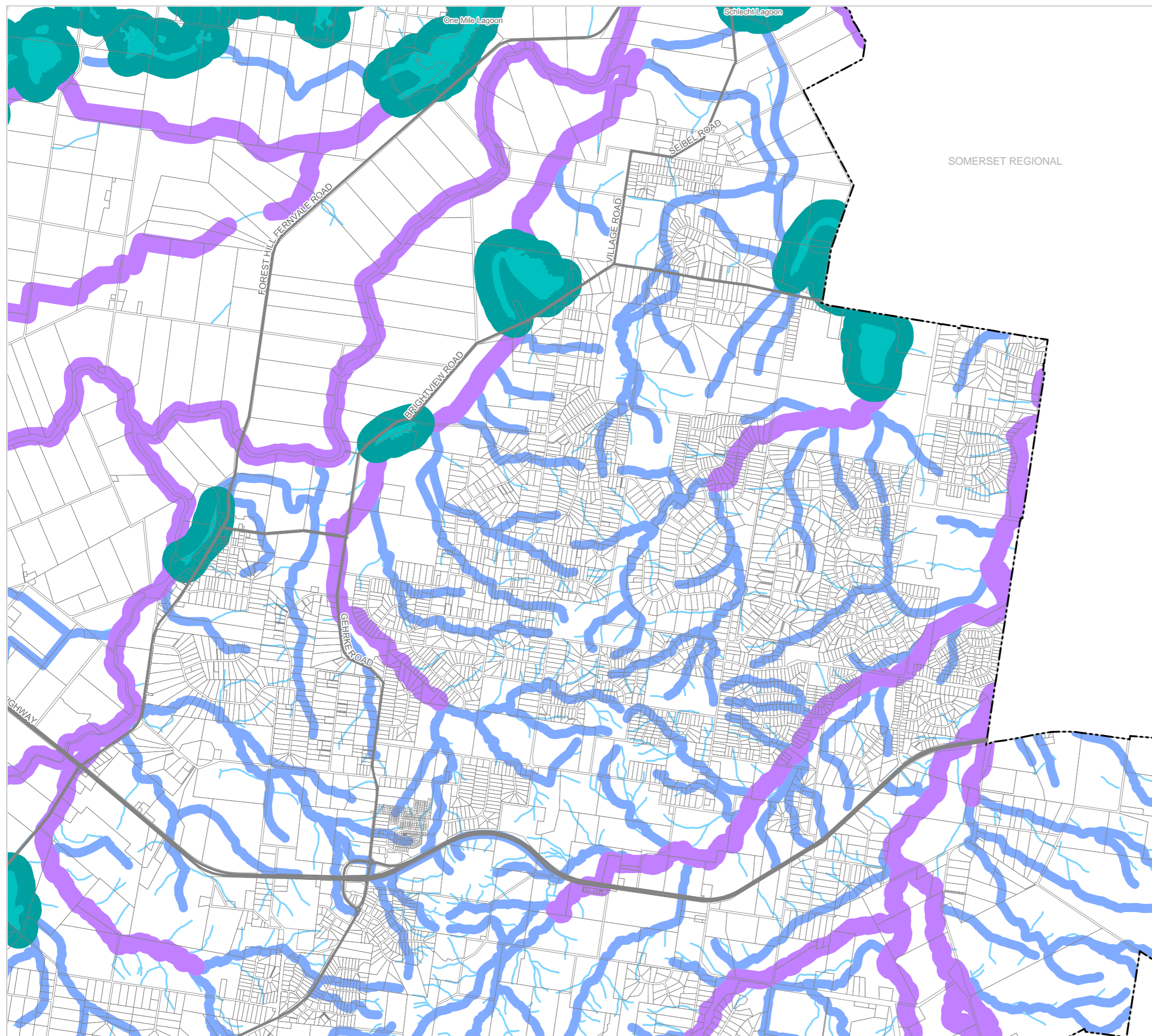
- Wetland
- Waterway - stream order 1 and 2
- Waterway - stream order 3 and greater
- Overland flow path

Separation areas

- Spring separation area
- Wetland separation area

Other Features

- Major Road
- Railway Network
- Cadastral Lots
- Local Government Boundary



NOTE

Refer to online or electronic mapping where layers overlap or labels obstruct the data on the map.

MAP INFORMATION

Based on or contains data sourced from the State Government which gives no warranty in relation to the data (including accuracy, reliability, completeness or suitability) and accepts no liability (including without limitation, liability in negligence) for any loss, damage or costs (including consequential damage) relating to any use of the data.
© Copyright Lockyer Valley Regional Council 2023

DATA SOURCES

Cadastral data weekly - whole of State Queensland, Rail network - Queensland, Baseline roads and tracks - Queensland: © State of Queensland (Department of Resources) 2023. Watercourse identification map - springs - Queensland, High ecological significance wetlands - Queensland, High ecological value waters - Queensland, Regulated vegetation defined watercourse - Queensland: © State of Queensland (Department of Environment and Science) 2023.

Gazettal Date: 00/00/0000

Geocentric Datum of Australia (GDA2020 / MGA zone 56)



Date: 19/6/2023

Approx Scale @ A3: 1:40,000



Sheet Index

