



Lockyer Valley Regional Council Draft Planning Scheme

REGIONAL COUNCIL

OM04 Bushfire hazard overlay map

Bushfire Hazard

- BH1 - Very High Potential Bushfire Intensity
- BH2 - High Potential Bushfire Intensity
- BH3 - Medium Potential Bushfire Intensity
- BH4 - Potential Impact Buffer

Other Features

- Major Road
- Railway Network
- Cadastral Lots
- Local Government Boundary
- Watercourse or waterbody

NOTE

Refer to online or electronic mapping where layers overlap or labels obstruct the data on the map.

MAP INFORMATION

Based on or contains data sourced from the State Government which gives no warranty in relation to the data (including accuracy, reliability, completeness or suitability) and accepts no liability (including without limitation, liability in negligence) for any loss, damage or costs (including consequential damage) relating to any use of the data.
© Copyright Lockyer Valley Regional Council 2023

DATA SOURCES

Cadastral data weekly - whole of State Queensland, Rail network - Queensland, Baseline roads and tracks - Queensland; © State of Queensland (Department of Resources) 2023. Bushfire prone area - South East Queensland; © State of Queensland (Queensland Fire and Emergency Services) 2020

Gazettal Date: 00/00/0000

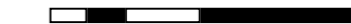
Geocentric Datum of Australia (GDA2020 / MGA zone 56)



Date: 19/6/2023

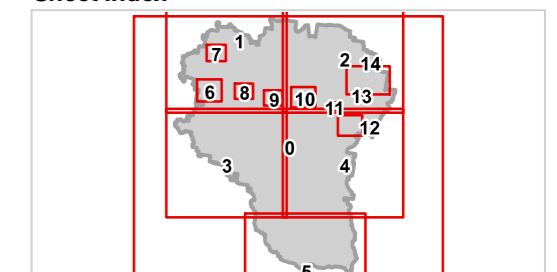
Approx Scale @ A3: 1:250,000

0 10

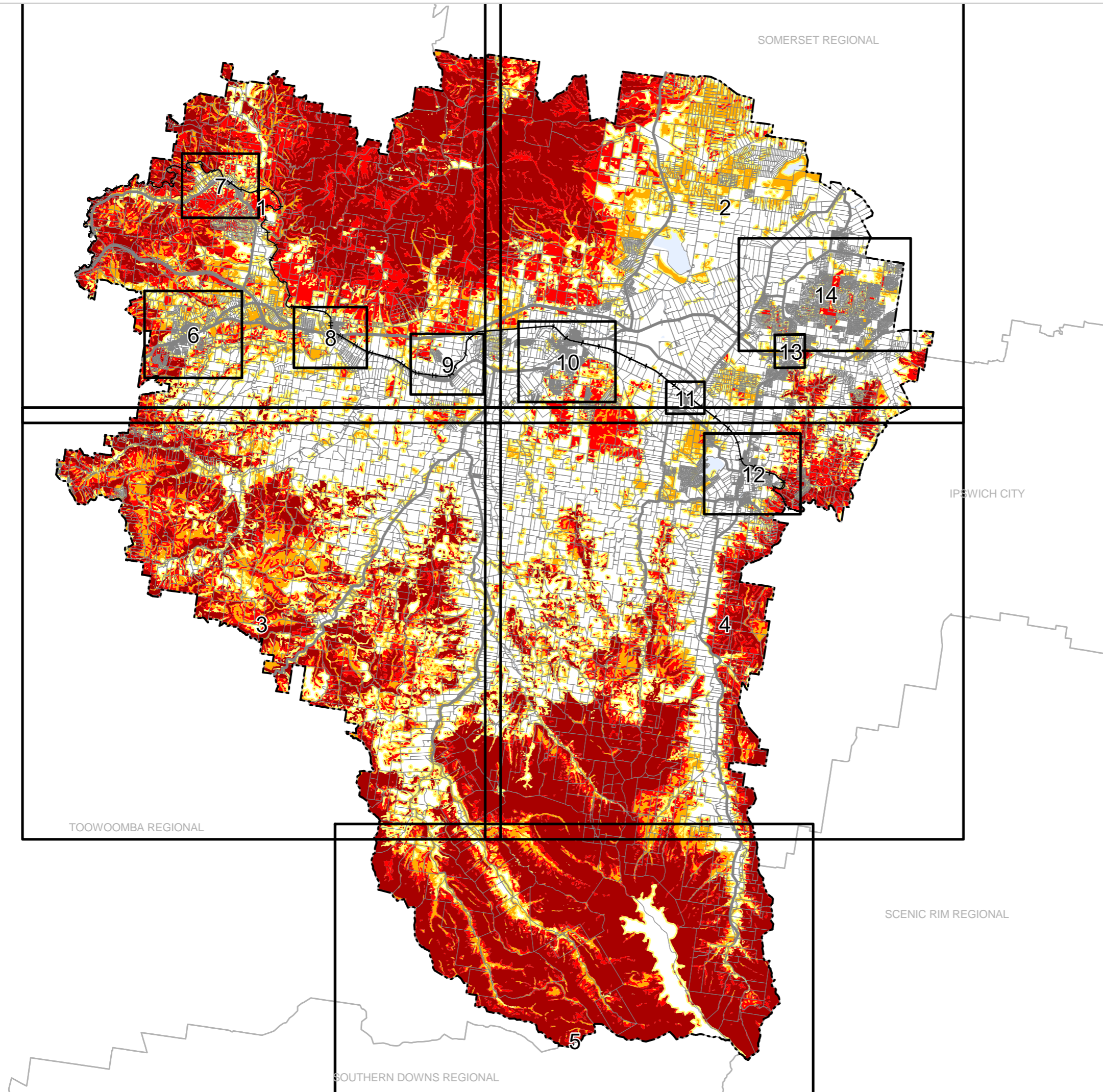


kilometres

Sheet Index



OM04 Bushfire hazard overlay
Index - 00



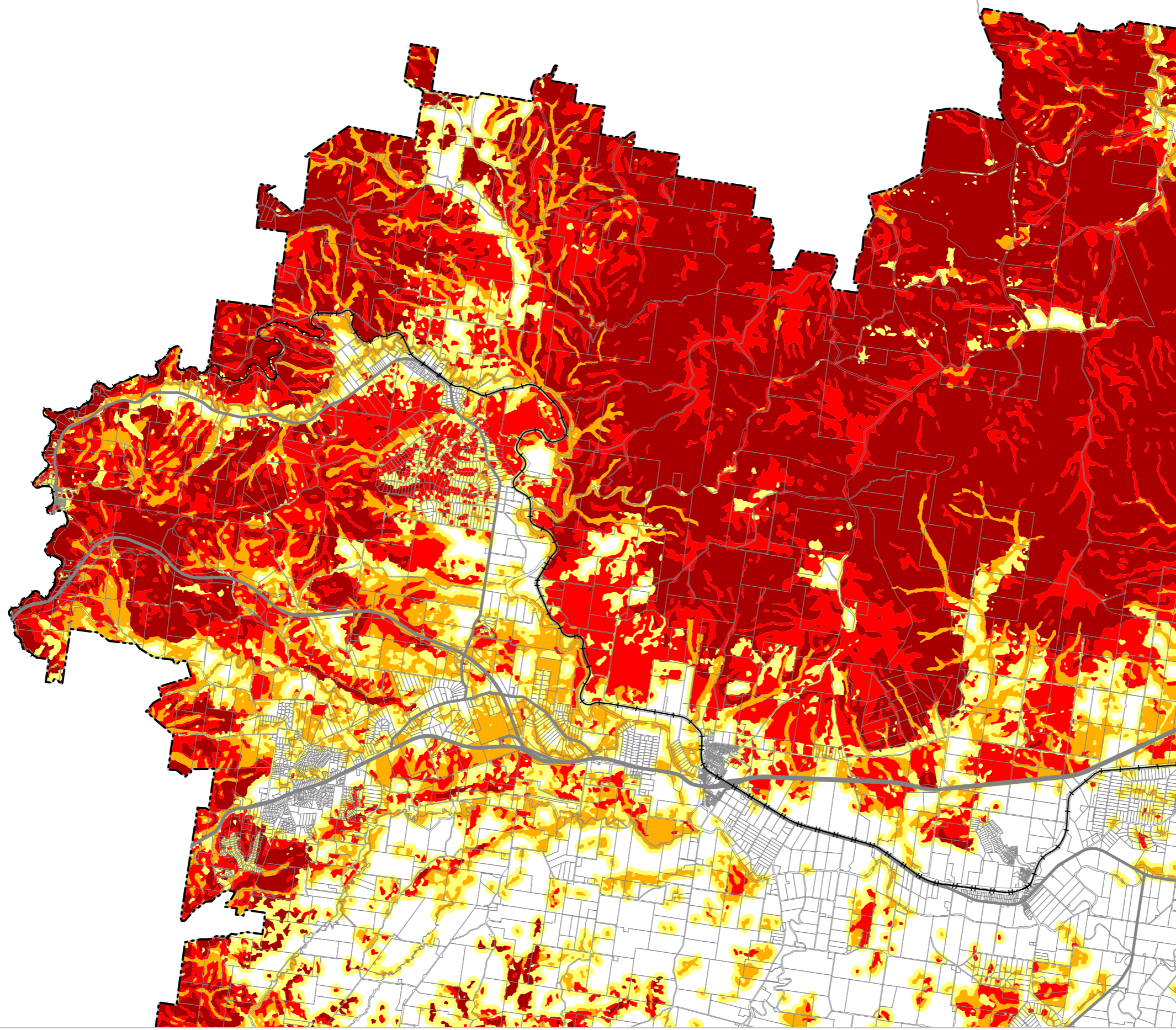


REGIONAL COUNCIL

OM04 Bushfire hazard overlay map

TOOWOOMBA REGIONAL

SOMERSET REGIONAL



Bushfire Hazard

- BH1 - Very High Potential Bushfire Intensity
- BH2 - High Potential Bushfire Intensity
- BH3 - Medium Potential Bushfire Intensity
- BH4 - Potential Impact Buffer

Other Features

- Major Road
- Railway Network
- Cadastral Lots
- Local Government Boundary
- Watercourse or waterbody

NOTE

Refer to online or electronic mapping where layers overlap or labels obstruct the data on the map.

MAP INFORMATION

Based on or contains data sourced from the State Government which gives no warranty in relation to the data (including accuracy, reliability, completeness or suitability) and accepts no liability (including without limitation, liability in negligence) for any loss, damage or costs (including consequential damage) relating to any use of the data.
© Copyright Lockyer Valley Regional Council 2023

DATA SOURCES

Cadastral data weekly - whole of State Queensland, Rail network - Queensland, Baseline roads and tracks - Queensland; © State of Queensland (Department of Resources) 2023. Bushfire prone area - South East Queensland; © State of Queensland (Queensland Fire and Emergency Services) 2020

Gazettal Date: 00/00/0000

Geocentric Datum of Australia (GDA2020 / MGA zone 56)

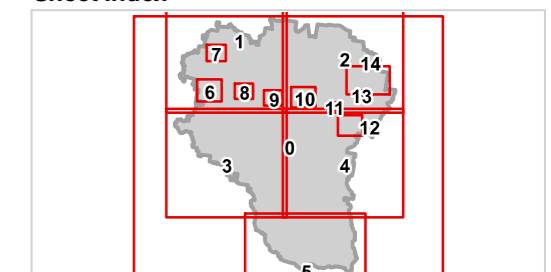


Date: 19/6/2023

Approx Scale @ A3: 1:100,000



Sheet Index



OM04 Bushfire hazard overlay
LGA north-west - 01



REGIONAL COUNCIL

SOMERSET REGIONAL

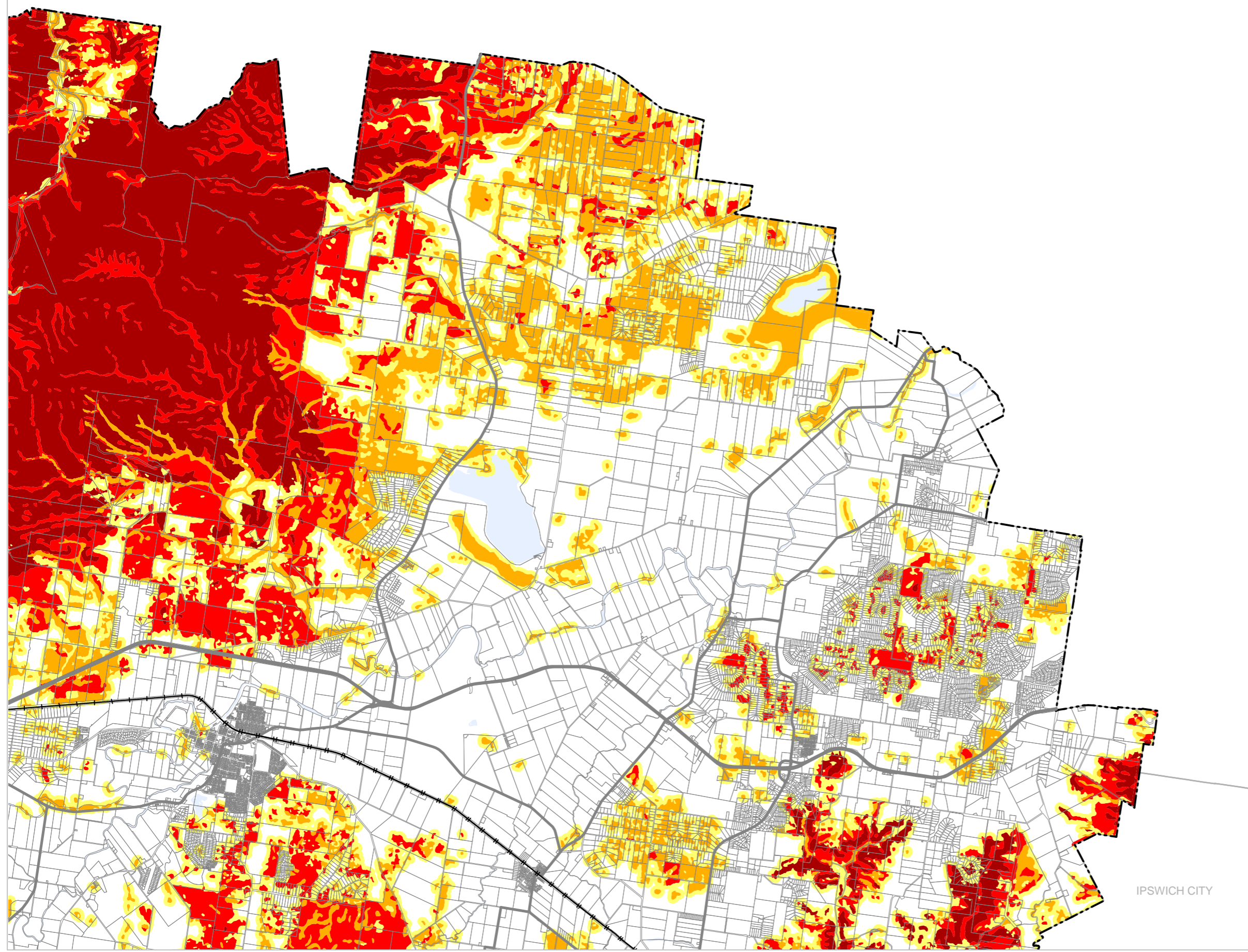
OM04 Bushfire hazard overlay map

Bushfire Hazard

- BH1 - Very High Potential Bushfire Intensity
- BH2 - High Potential Bushfire Intensity
- BH3 - Medium Potential Bushfire Intensity
- BH4 - Potential Impact Buffer

Other Features

- Major Road
- Railway Network
- Cadastral_Lots
- Local Government Boundary
- Watercourse or waterbody



NOTE

Refer to online or electronic mapping where layers overlap or labels obstruct the data on the map.

MAP INFORMATION

Based on or contains data sourced from the State Government which gives no warranty in relation to the data (including accuracy, reliability, completeness or suitability) and accepts no liability (including without limitation, liability in negligence) for any loss, damage or costs (including consequential damage) relating to any use of the data.
© Copyright Lockyer Valley Regional Council 2023

DATA SOURCES

Cadastral data weekly - whole of State Queensland, Rail network - Queensland, Baseline roads and tracks - Queensland: © State of Queensland (Department of Resources) 2023. Bushfire prone area - South East Queensland: © State of Queensland (Queensland Fire and Emergency Services) 2020

Gazettal Date: 00/00/0000

Geocentric Datum of Australia (GDA2020 / MGA zone 56)

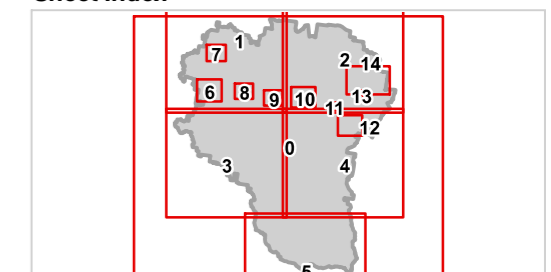


Date: 19/6/2023

Approx Scale @ A3: 1:100,000



Sheet Index



OM04 Bushfire hazard overlay LGA north-east - 02



Lockyer Valley Regional Council Draft Planning Scheme

REGIONAL COUNCIL

OM04 Bushfire hazard overlay map

Bushfire Hazard

- BH1 - Very High Potential Bushfire Intensity
- BH2 - High Potential Bushfire Intensity
- BH3 - Medium Potential Bushfire Intensity
- BH4 - Potential Impact Buffer

Other Features

- Major Road
- Railway Network
- Cadastral_Lots
- Local Government Boundary
- Watercourse or waterbody

NOTE

Refer to online or electronic mapping where layers overlap or labels obstruct the data on the map.

MAP INFORMATION

Based on or contains data sourced from the State Government which gives no warranty in relation to the data (including accuracy, reliability, completeness or suitability) and accepts no liability (including without limitation, liability in negligence) for any loss, damage or costs (including consequential damage) relating to any use of the data.
© Copyright Lockyer Valley Regional Council 2023

DATA SOURCES

Cadastral data weekly - whole of State Queensland, Rail network - Queensland, Baseline roads and tracks - Queensland: © State of Queensland (Department of Resources) 2023. Bushfire prone area - South East Queensland: © State of Queensland (Queensland Fire and Emergency Services) 2020

Gazettal Date: 00/00/0000

Geocentric Datum of Australia (GDA2020 / MGA zone 56)



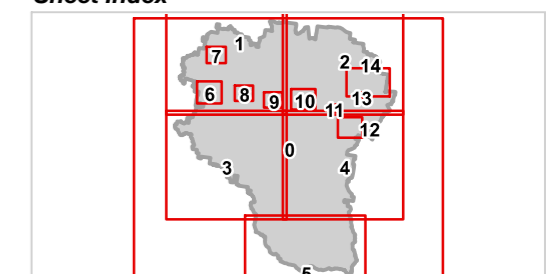
Date: 19/6/2023

Approx Scale @ A3: 1:100,000



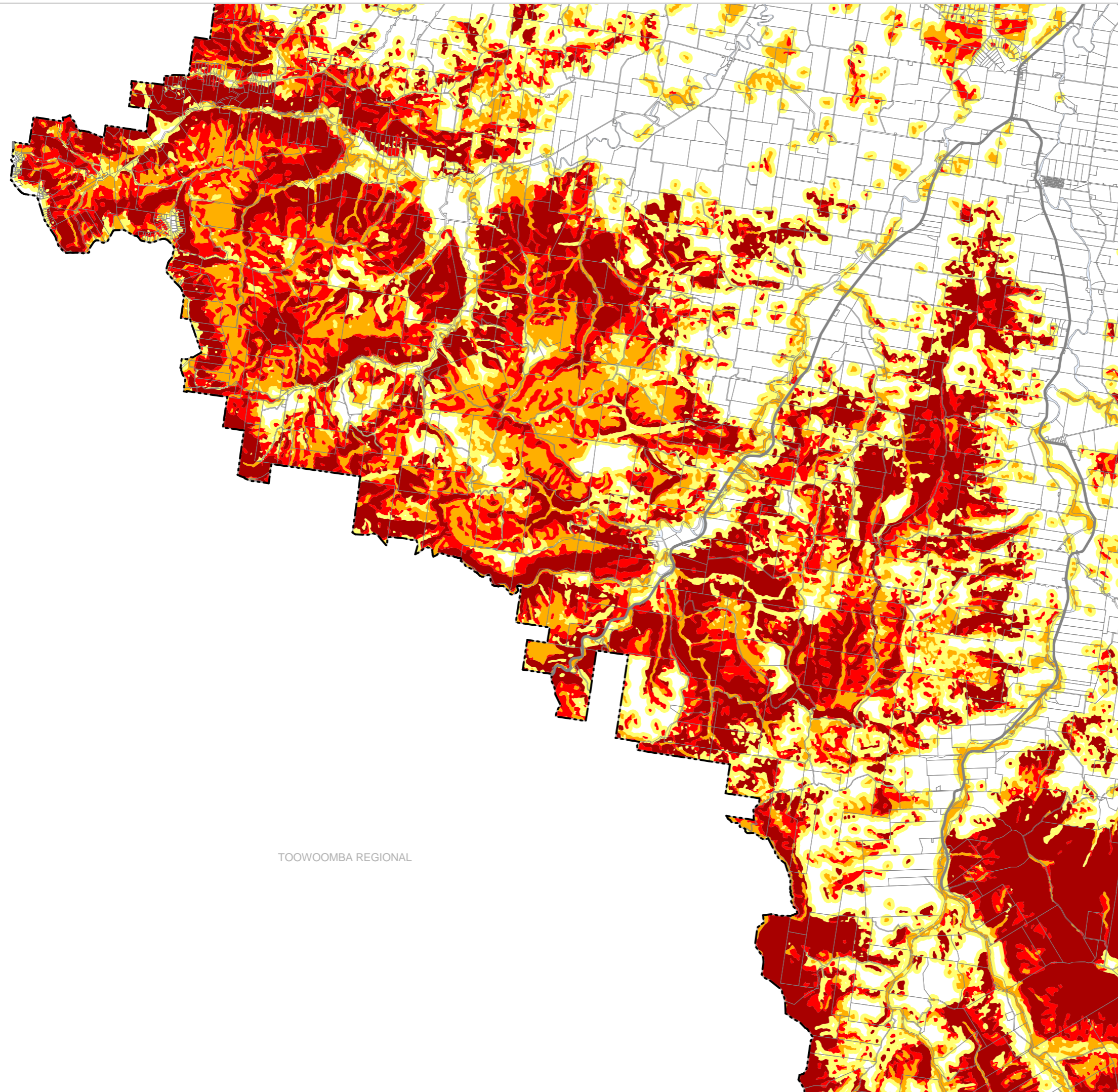
kilometres

Sheet Index



OM04 Bushfire hazard overlay
LGA south-west - 03

TOOWOOMBA REGIONAL





Lockyer Valley Regional Council Draft Planning Scheme

REGIONAL COUNCIL

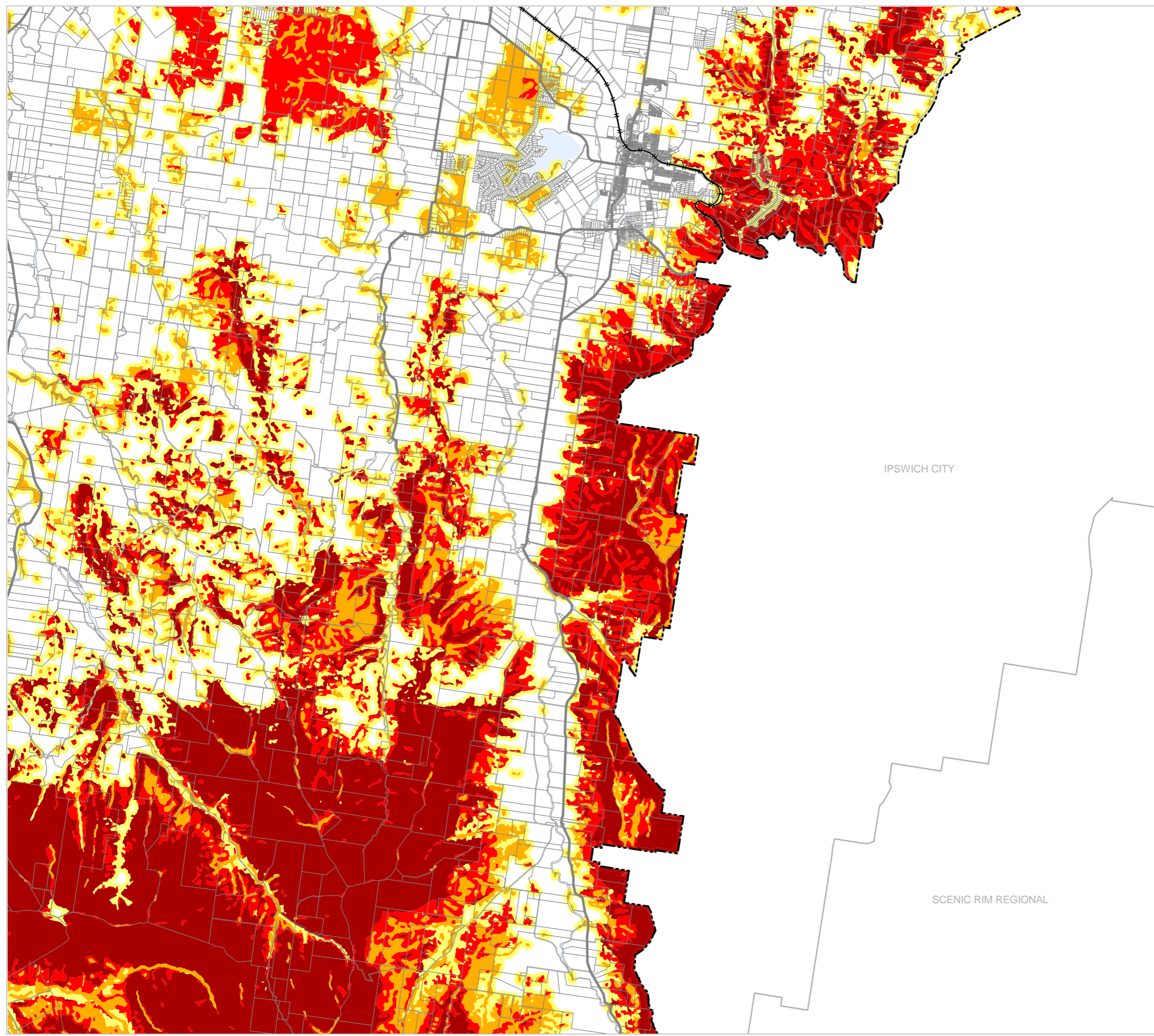
OM04 Bushfire hazard overlay map

Bushfire Hazard

- BH1 - Very High Potential Bushfire Intensity
- BH2 - High Potential Bushfire Intensity
- BH3 - Medium Potential Bushfire Intensity
- BH4 - Potential Impact Buffer

Other Features

- Major Road
- Railway Network
- Cadastral_Lots
- Local Government Boundary
- Watercourse or waterbody



IPSWICH CITY

SCENIC RIM REGIONAL

NOTE

Refer to online or electronic mapping where layers overlap or labels obstruct the data on the map.

MAP INFORMATION

Based on or contains data sourced from the State Government which gives no warranty in relation to the data (including accuracy, reliability, completeness or suitability) and accepts no liability (including without limitation, liability in negligence) for any loss, damage or costs (including consequential damage) relating to any use of the data.
© Copyright Lockyer Valley Regional Council 2023

DATA SOURCES

Cadastral data weekly - whole of State Queensland, Rail network - Queensland, Baseline roads and tracks - Queensland: © State of Queensland (Department of Resources) 2023. Bushfire prone area - South East Queensland: © State of Queensland (Queensland Fire and Emergency Services) 2020

Gazettal Date: 00/00/0000

Geocentric Datum of Australia (GDA2020 / MGA zone 56)



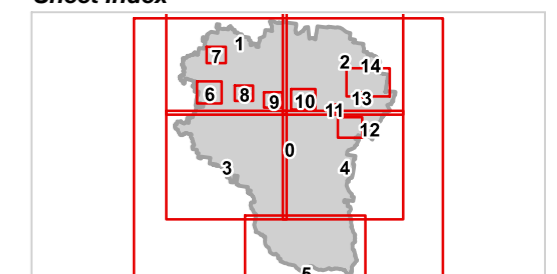
Date: 19/6/2023

Approx Scale @ A3: 1:100,000



kilometres

Sheet Index



OM04 Bushfire hazard overlay
LGA south-east - 04



Lockyer Valley Regional Council Draft Planning Scheme

REGIONAL COUNCIL

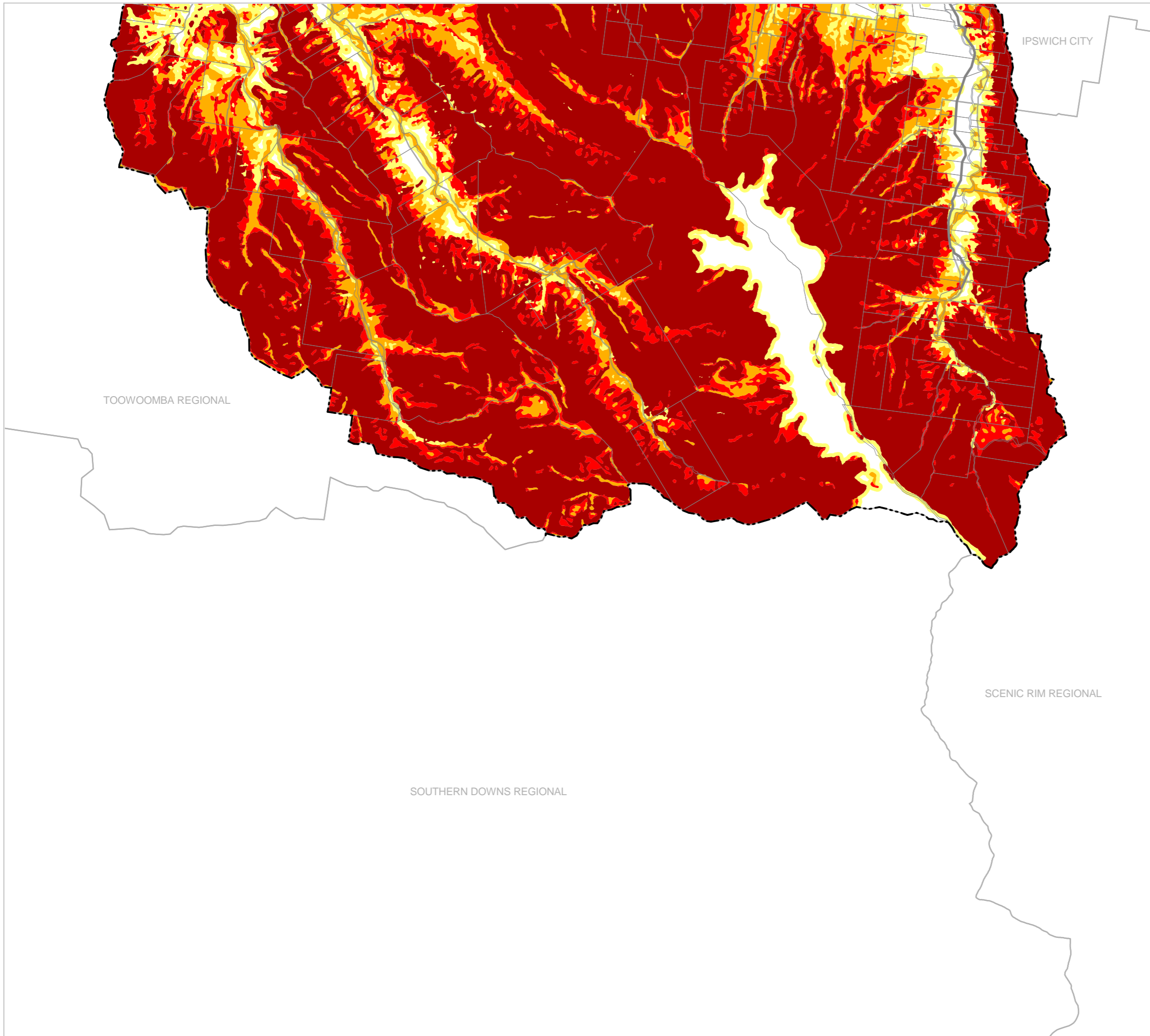
OM04 Bushfire hazard overlay map

Bushfire Hazard

- BH1 - Very High Potential Bushfire Intensity
- BH2 - High Potential Bushfire Intensity
- BH3 - Medium Potential Bushfire Intensity
- BH4 - Potential Impact Buffer

Other Features

- Major Road
- Railway Network
- Cadastral_Lots
- Local Government Boundary
- Watercourse or waterbody



NOTE

Refer to online or electronic mapping where layers overlap or labels obstruct the data on the map.

MAP INFORMATION

Based on or contains data sourced from the State Government which gives no warranty in relation to the data (including accuracy, reliability, completeness or suitability) and accepts no liability (including without limitation, liability in negligence) for any loss, damage or costs (including consequential damage) relating to any use of the data.
© Copyright Lockyer Valley Regional Council 2023

DATA SOURCES

Cadastral data weekly - whole of State Queensland, Rail network - Queensland, Baseline roads and tracks - Queensland: © State of Queensland (Department of Resources) 2023. Bushfire prone area - South East Queensland: © State of Queensland (Queensland Fire and Emergency Services) 2020

Gazettal Date: 00/00/0000

Geocentric Datum of Australia (GDA2020 / MGA zone 56)

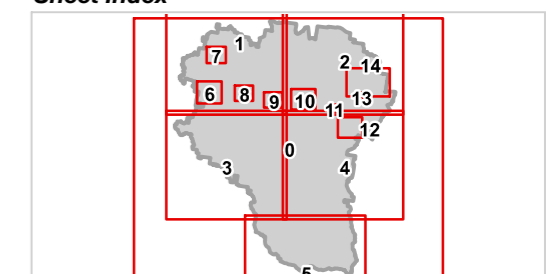


Date: 19/6/2023

Approx Scale @ A3: 1:100,000



Sheet Index







OM04 Bushfire hazard overlay
LGA south - 05




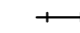



REGIONAL COUNCIL

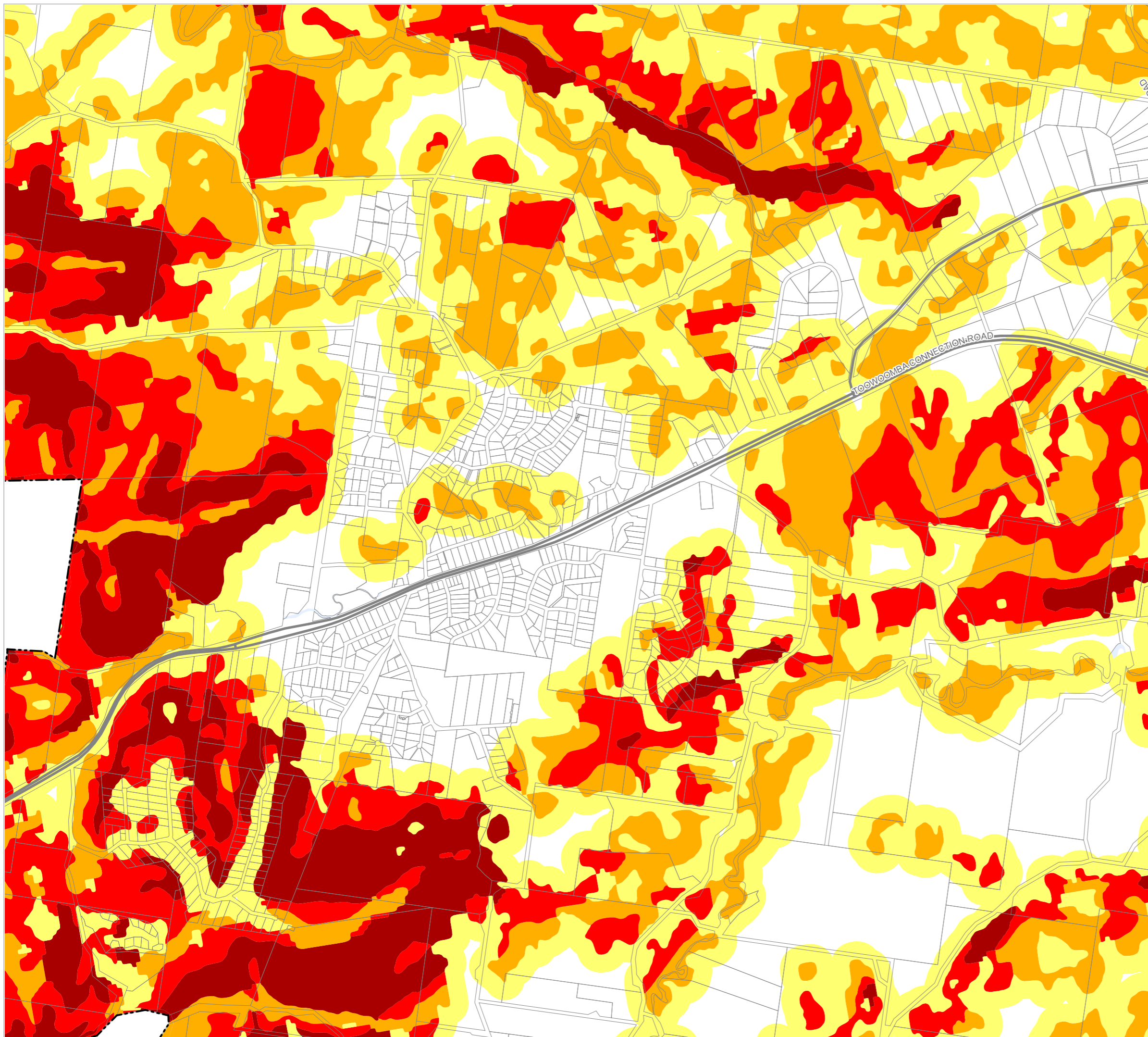
OM04 Bushfire hazard overlay map

Bushfire Hazard

-  BH1 - Very High Potential Bushfire Intensity
-  BH2 - High Potential Bushfire Intensity
-  BH3 - Medium Potential Bushfire Intensity
-  BH4 - Potential Impact Buffer

Other Features

-  Major Road
-  Railway Network
-  Cadastral Lots
-  Local Government Boundary
-  Watercourse or waterbody



NOTE

Refer to online or electronic mapping where layers overlap or labels obstruct the data on the map.

MAP INFORMATION

Based on or contains data sourced from the State Government which gives no warranty in relation to the data (including accuracy, reliability, completeness or suitability) and accepts no liability (including without limitation, liability in negligence) for any loss, damage or costs (including consequential damage) relating to any use of the data.
© Copyright Lockyer Valley Regional Council 2023

DATA SOURCES

Cadastral data weekly - whole of State Queensland, Rail network - Queensland, Baseline roads and tracks - Queensland: © State of Queensland (Department of Resources) 2023. Bushfire prone area - South East Queensland: © State of Queensland (Queensland Fire and Emergency Services) 2020

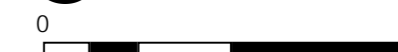
Gazettal Date: 00/00/0000

Geocentric Datum of Australia (GDA2020 / MGA zone 56)



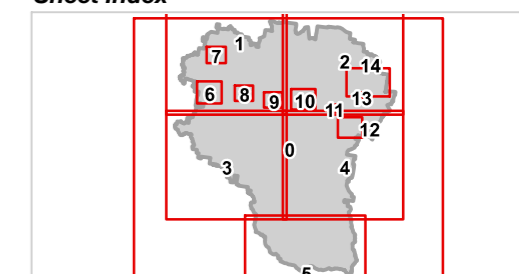
Date: 19/6/2023

Approx Scale @ A3: 1:20,000



kilometres

Sheet Index



**OM04 Bushfire hazard overlay
Withcott - 06**



Lockyer Valley Regional Council Draft Planning Scheme

REGIONAL COUNCIL

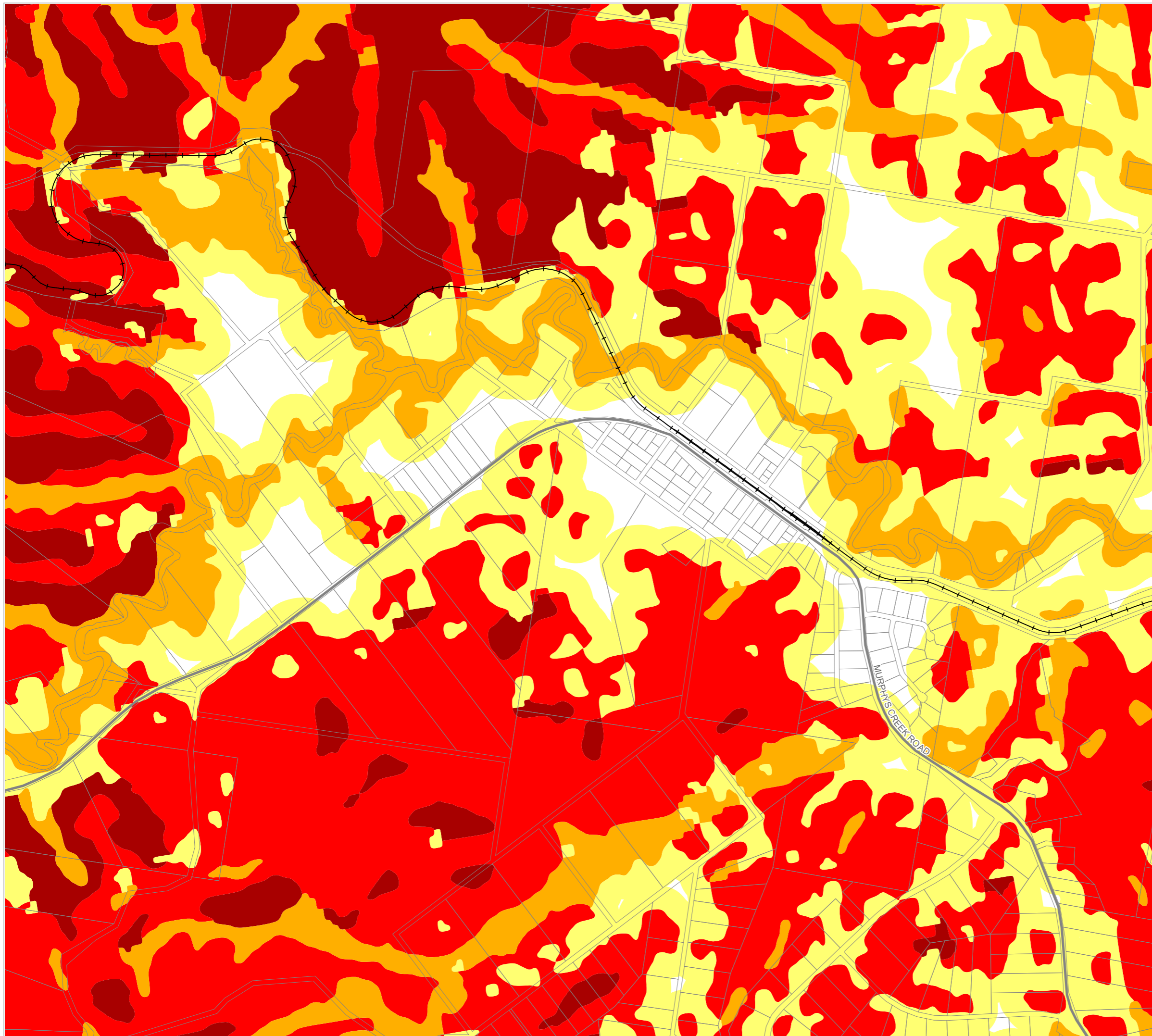
OM04 Bushfire hazard overlay map

Bushfire Hazard

- BH1 - Very High Potential Bushfire Intensity
- BH2 - High Potential Bushfire Intensity
- BH3 - Medium Potential Bushfire Intensity
- BH4 - Potential Impact Buffer

Other Features

- Major Road
- Railway Network
- Cadastral Lots
- Local Government Boundary
- Watercourse or waterbody



NOTE

Refer to online or electronic mapping where layers overlap or labels obstruct the data on the map.

MAP INFORMATION

Based on or contains data sourced from the State Government which gives no warranty in relation to the data (including accuracy, reliability, completeness or suitability) and accepts no liability (including without limitation, liability in negligence) for any loss, damage or costs (including consequential damage) relating to any use of the data.
© Copyright Lockyer Valley Regional Council 2023

DATA SOURCES

Cadastral data weekly - whole of State Queensland, Rail network - Queensland, Baseline roads and tracks - Queensland; © State of Queensland (Department of Resources) 2023. Bushfire prone area - South East Queensland; © State of Queensland (Queensland Fire and Emergency Services) 2020

Gazettal Date: 00/00/0000

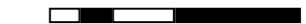
Geocentric Datum of Australia (GDA2020 / MGA zone 56)



Date: 19/6/2023

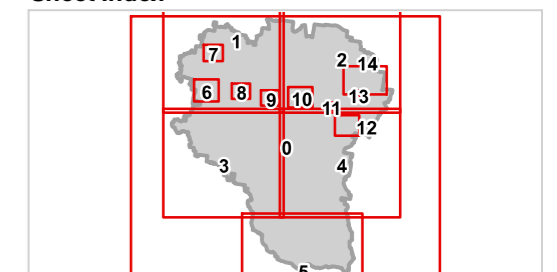
Approx Scale @ A3: 1:15,000

0 0.5



kilometres

Sheet Index



OM04 Bushfire hazard overlay
Murphys Creek - 07



REGIONAL COUNCIL

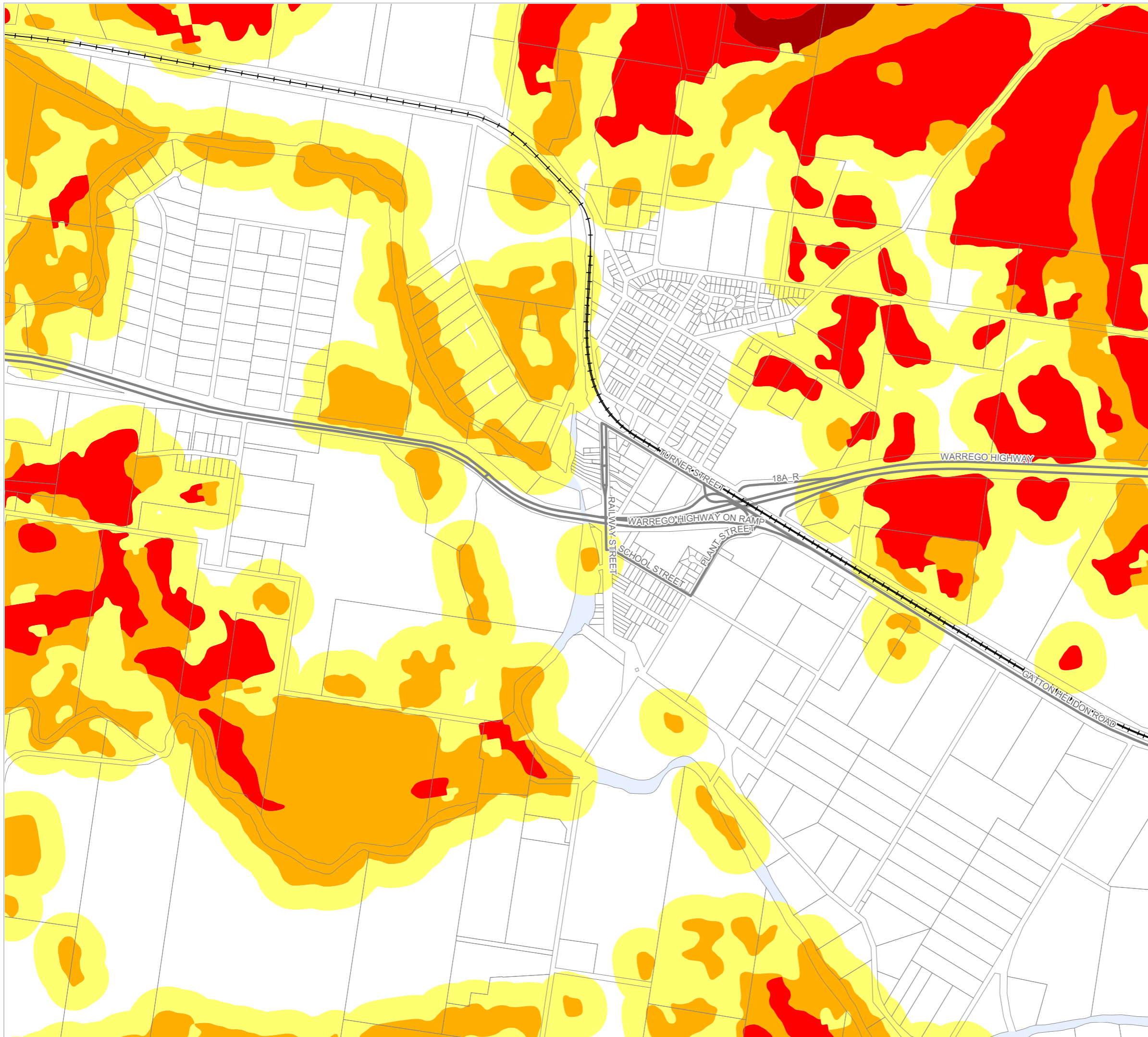
OM04 Bushfire hazard overlay map

Bushfire Hazard

- BH1 - Very High Potential Bushfire Intensity
- BH2 - High Potential Bushfire Intensity
- BH3 - Medium Potential Bushfire Intensity
- BH4 - Potential Impact Buffer

Other Features

- Major Road
- Railway Network
- Cadastral Lots
- Local Government Boundary
- Watercourse or waterbody



NOTE

Refer to online or electronic mapping where layers overlap or labels obstruct the data on the map.

MAP INFORMATION

Based on or contains data sourced from the State Government which gives no warranty in relation to the data (including accuracy, reliability, completeness or suitability) and accepts no liability (including without limitation, liability in negligence) for any loss, damage or costs (including consequential damage) relating to any use of the data.
© Copyright Lockyer Valley Regional Council 2023

DATA SOURCES

Cadastral data weekly - whole of State Queensland, Rail network - Queensland, Baseline roads and tracks - Queensland: © State of Queensland (Department of Resources) 2023. Bushfire prone area - South East Queensland: © State of Queensland (Queensland Fire and Emergency Services) 2020

Gazettal Date: 00/00/0000

Geocentric Datum of Australia (GDA2020 / MGA zone 56)



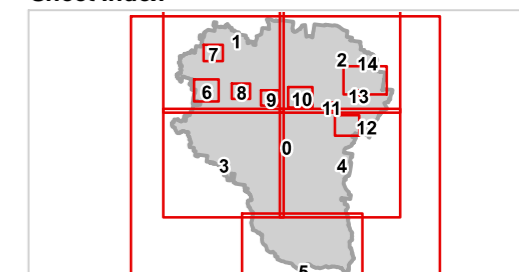
Date: 19/6/2023

Approx Scale @ A3: 1:15,000



kilometres

Sheet Index



**OM04 Bushfire hazard overlay
Helidon - 08**



Lockyer Valley Regional Council Draft Planning Scheme

REGIONAL COUNCIL

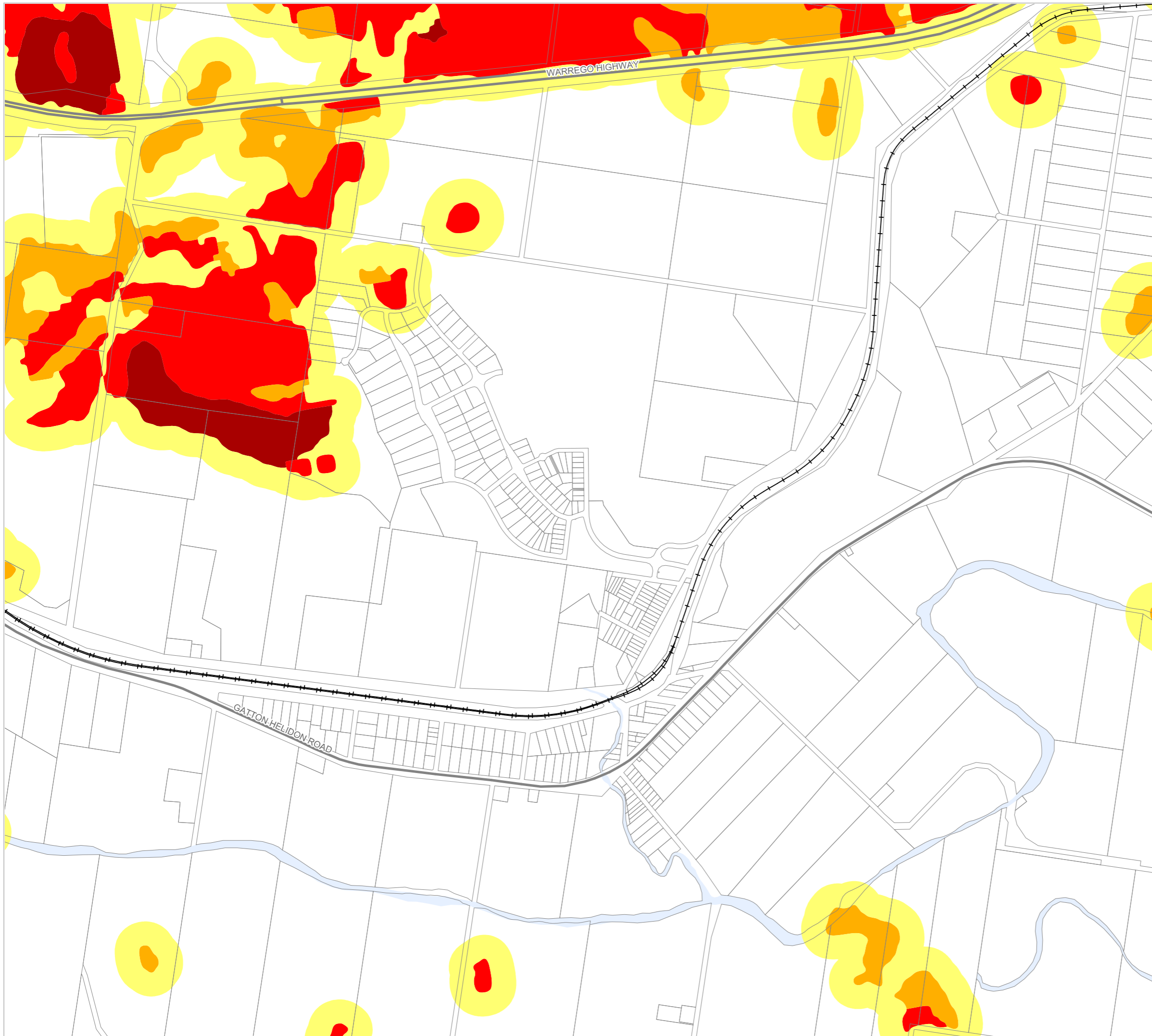
OM04 Bushfire hazard overlay map

Bushfire Hazard

- BH1 - Very High Potential Bushfire Intensity
- BH2 - High Potential Bushfire Intensity
- BH3 - Medium Potential Bushfire Intensity
- BH4 - Potential Impact Buffer

Other Features

- Major Road
- Railway Network
- Cadastral Lots
- Local Government Boundary
- Watercourse or waterbody



NOTE

Refer to online or electronic mapping where layers overlap or labels obstruct the data on the map.

MAP INFORMATION

Based on or contains data sourced from the State Government which gives no warranty in relation to the data (including accuracy, reliability, completeness or suitability) and accepts no liability (including without limitation, liability in negligence) for any loss, damage or costs (including consequential damage) relating to any use of the data.
© Copyright Lockyer Valley Regional Council 2023

DATA SOURCES

Cadastral data weekly - whole of State Queensland, Rail network - Queensland, Baseline roads and tracks - Queensland: © State of Queensland (Department of Resources) 2023. Bushfire prone area - South East Queensland: © State of Queensland (Queensland Fire and Emergency Services) 2020

Gazettal Date: 00/00/0000

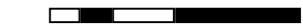
Geocentric Datum of Australia (GDA2020 / MGA zone 56)



Date: 19/6/2023

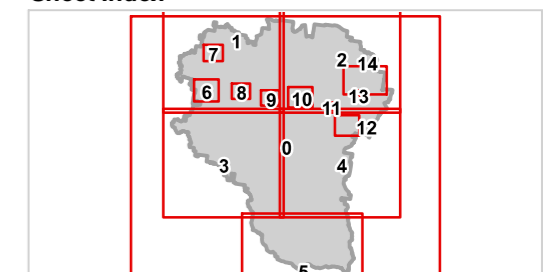
Approx Scale @ A3: 1:15,000

0 0.5



kilometres

Sheet Index



OM04 Bushfire hazard overlay
Grantham - 09



Lockyer Valley Regional Council Draft Planning Scheme

REGIONAL COUNCIL

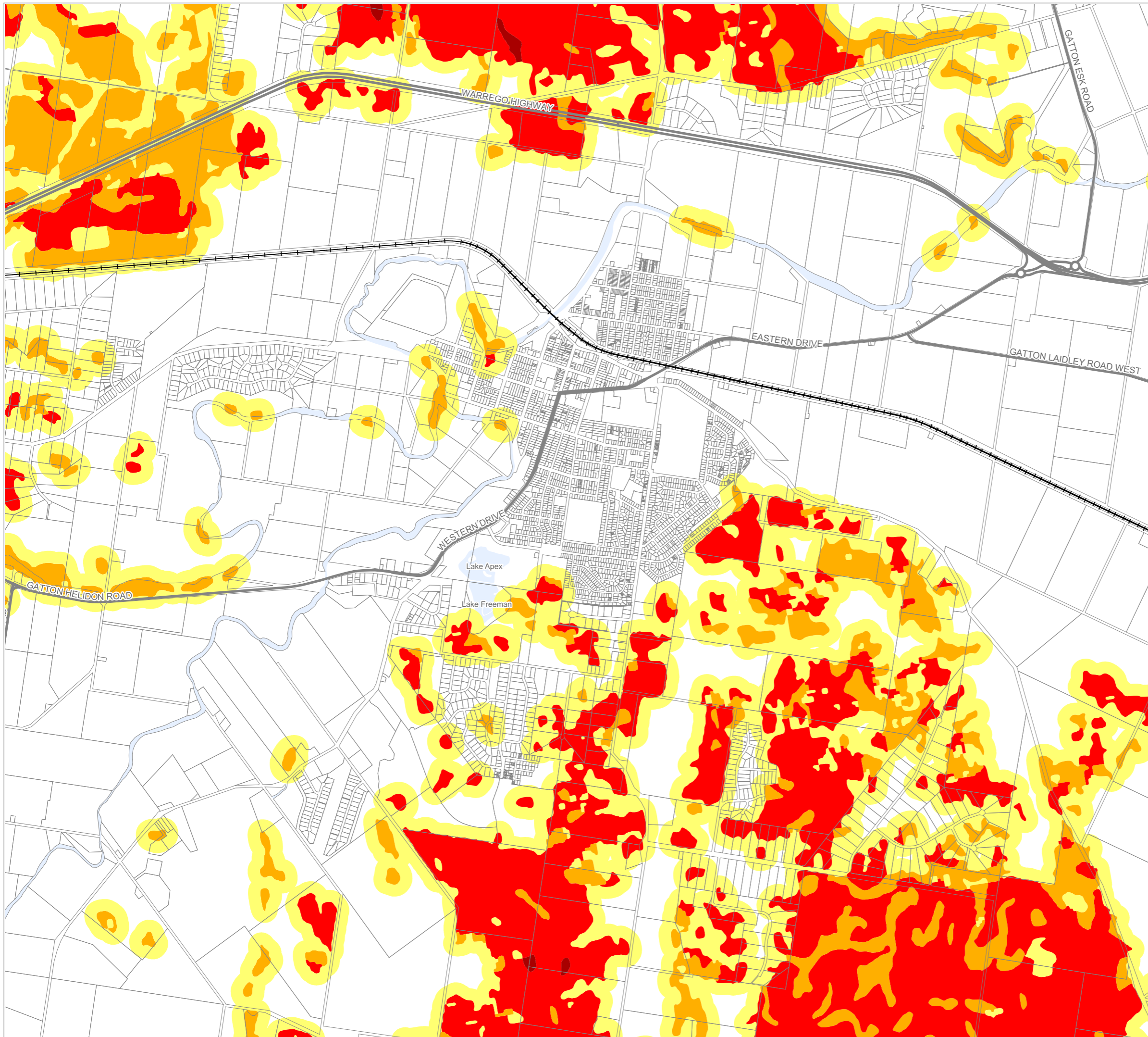
OM04 Bushfire hazard overlay map

Bushfire Hazard

- BH1 - Very High Potential Bushfire Intensity
- BH2 - High Potential Bushfire Intensity
- BH3 - Medium Potential Bushfire Intensity
- BH4 - Potential Impact Buffer

Other Features

- Major Road
- Railway Network
- Cadastral Lots
- Local Government Boundary
- Watercourse or waterbody



NOTE

Refer to online or electronic mapping where layers overlap or labels obstruct the data on the map.

MAP INFORMATION

Based on or contains data sourced from the State Government which gives no warranty in relation to the data (including accuracy, reliability, completeness or suitability) and accepts no liability (including without limitation, liability in negligence) for any loss, damage or costs (including consequential damage) relating to any use of the data.
© Copyright Lockyer Valley Regional Council 2023

DATA SOURCES

Cadastral data weekly - whole of State Queensland, Rail network - Queensland, Baseline roads and tracks - Queensland: © State of Queensland (Department of Resources) 2023. Bushfire prone area - South East Queensland: © State of Queensland (Queensland Fire and Emergency Services) 2020

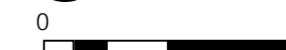
Gazettal Date: 00/00/0000

Geocentric Datum of Australia (GDA2020 / MGA zone 56)



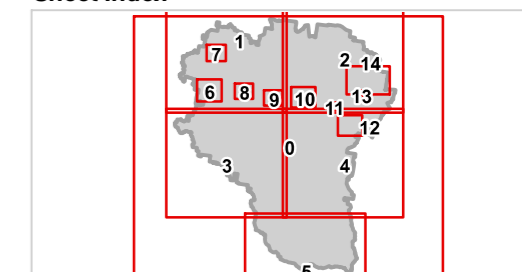
Date: 19/6/2023

Approx Scale @ A3: 1:30,000



kilometres

Sheet Index



OM04 Bushfire hazard overlay
Gattton - 10



Lockyer Valley Regional Council Draft Planning Scheme

REGIONAL COUNCIL

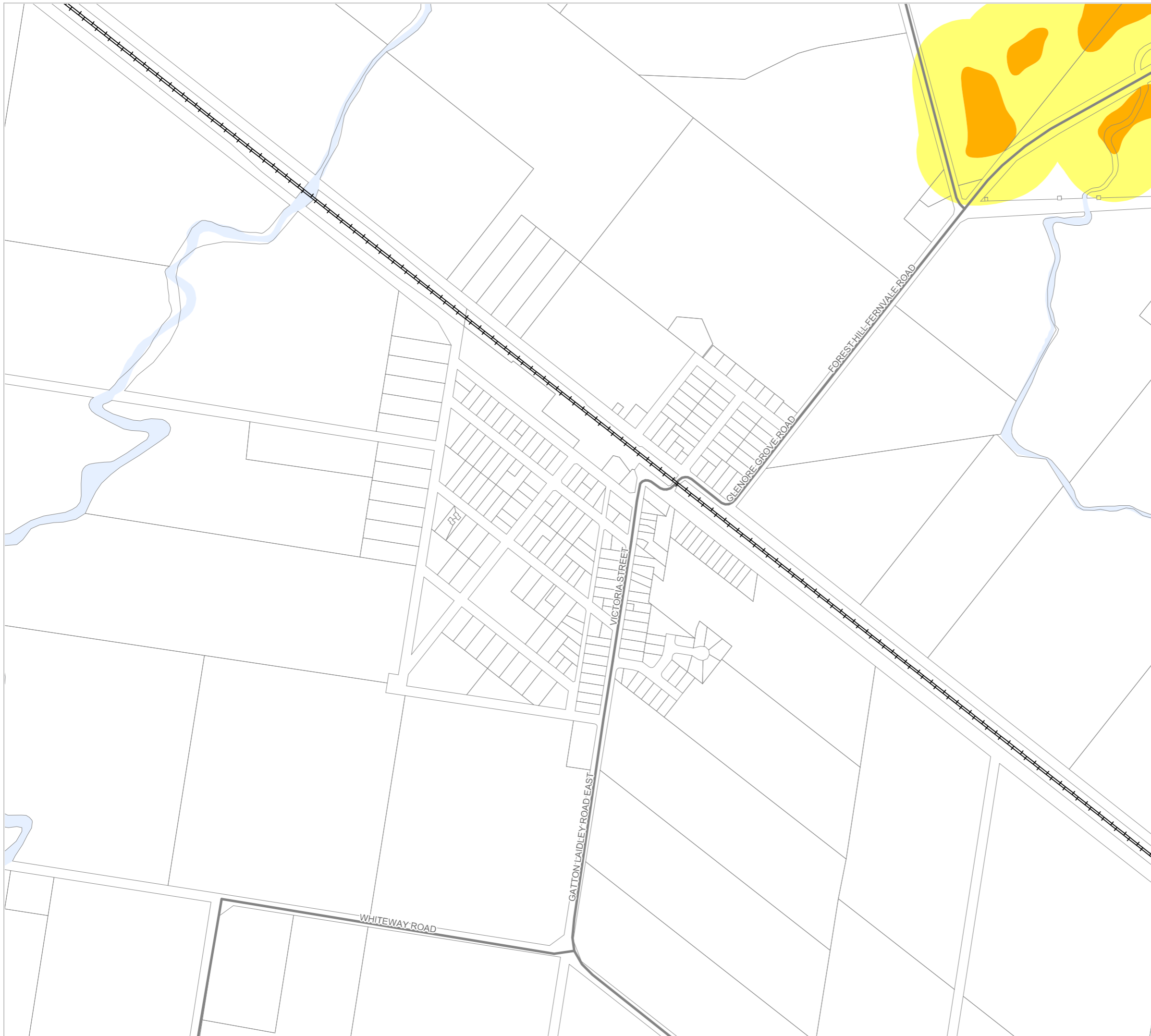
OM04 Bushfire hazard overlay map

Bushfire Hazard

- BH1 - Very High Potential Bushfire Intensity
- BH2 - High Potential Bushfire Intensity
- BH3 - Medium Potential Bushfire Intensity
- BH4 - Potential Impact Buffer

Other Features

- Major Road
- Railway Network
- Cadastral Lots
- Local Government Boundary
- Watercourse or waterbody



NOTE

Refer to online or electronic mapping where layers overlap or labels obstruct the data on the map.

MAP INFORMATION

Based on or contains data sourced from the State Government which gives no warranty in relation to the data (including accuracy, reliability, completeness or suitability) and accepts no liability (including without limitation, liability in negligence) for any loss, damage or costs (including consequential damage) relating to any use of the data.
© Copyright Lockyer Valley Regional Council 2023

DATA SOURCES

Cadastral data weekly - whole of State Queensland, Rail network - Queensland, Baseline roads and tracks - Queensland: © State of Queensland (Department of Resources) 2023. Bushfire prone area - South East Queensland: © State of Queensland (Queensland Fire and Emergency Services) 2020

Gazettal Date: 00/00/0000

Geocentric Datum of Australia (GDA2020 / MGA zone 56)

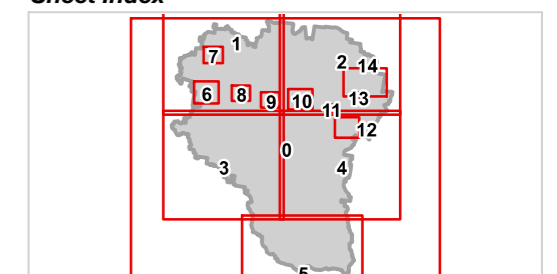


Date: 19/6/2023

Approx Scale @ A3: 1:7,500



Sheet Index



OM04 Bushfire hazard overlay
Forest Hill - 11



Lockyer Valley Regional Council Draft Planning Scheme

REGIONAL COUNCIL

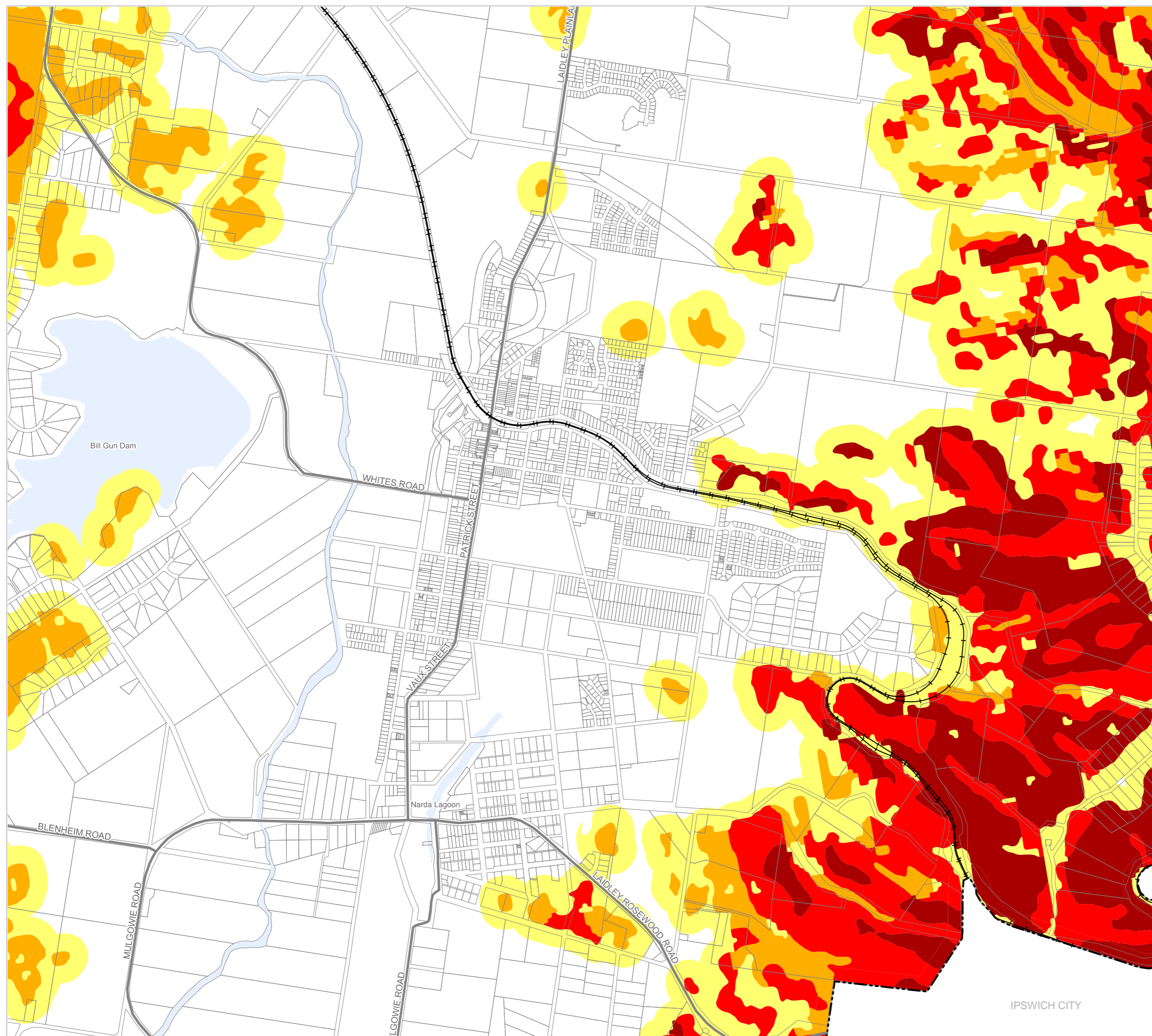
OM04 Bushfire hazard overlay map

Bushfire Hazard

- BH1 - Very High Potential Bushfire Intensity
- BH2 - High Potential Bushfire Intensity
- BH3 - Medium Potential Bushfire Intensity
- BH4 - Potential Impact Buffer

Other Features

- Major Road
- Railway Network
- Cadastral Lots
- Local Government Boundary
- Watercourse or waterbody



NOTE

Refer to online or electronic mapping where layers overlap or labels obstruct the data on the map.

MAP INFORMATION

Based on or contains data sourced from the State Government which gives no warranty in relation to the data (including accuracy, reliability, completeness or suitability) and accepts no liability (including without limitation, liability in negligence) for any loss, damage or costs (including consequential damage) relating to any use of the data.
© Copyright Lockyer Valley Regional Council 2023

DATA SOURCES

Cadastral data weekly - whole of State Queensland, Rail network - Queensland, Baseline roads and tracks - Queensland © State of Queensland (Department of Resources) 2023. Bushfire prone area - South East Queensland © State of Queensland (Queensland Fire and Emergency Services) 2020

Gazettal Date: 00/00/0000

Geocentric Datum of Australia (GDA2020 / MGA zone 56)

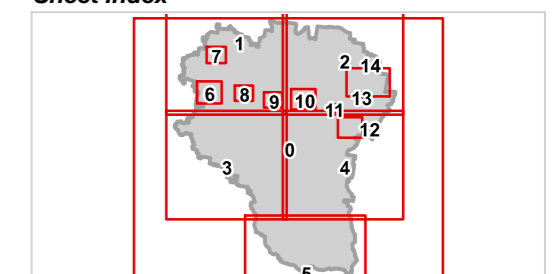


Date: 19/6/2023

Approx Scale @ A3: 1:20,000



Sheet Index



OM04 Bushfire hazard overlay
Laidley - 12





IPSWICH CITY




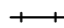



REGIONAL COUNCIL

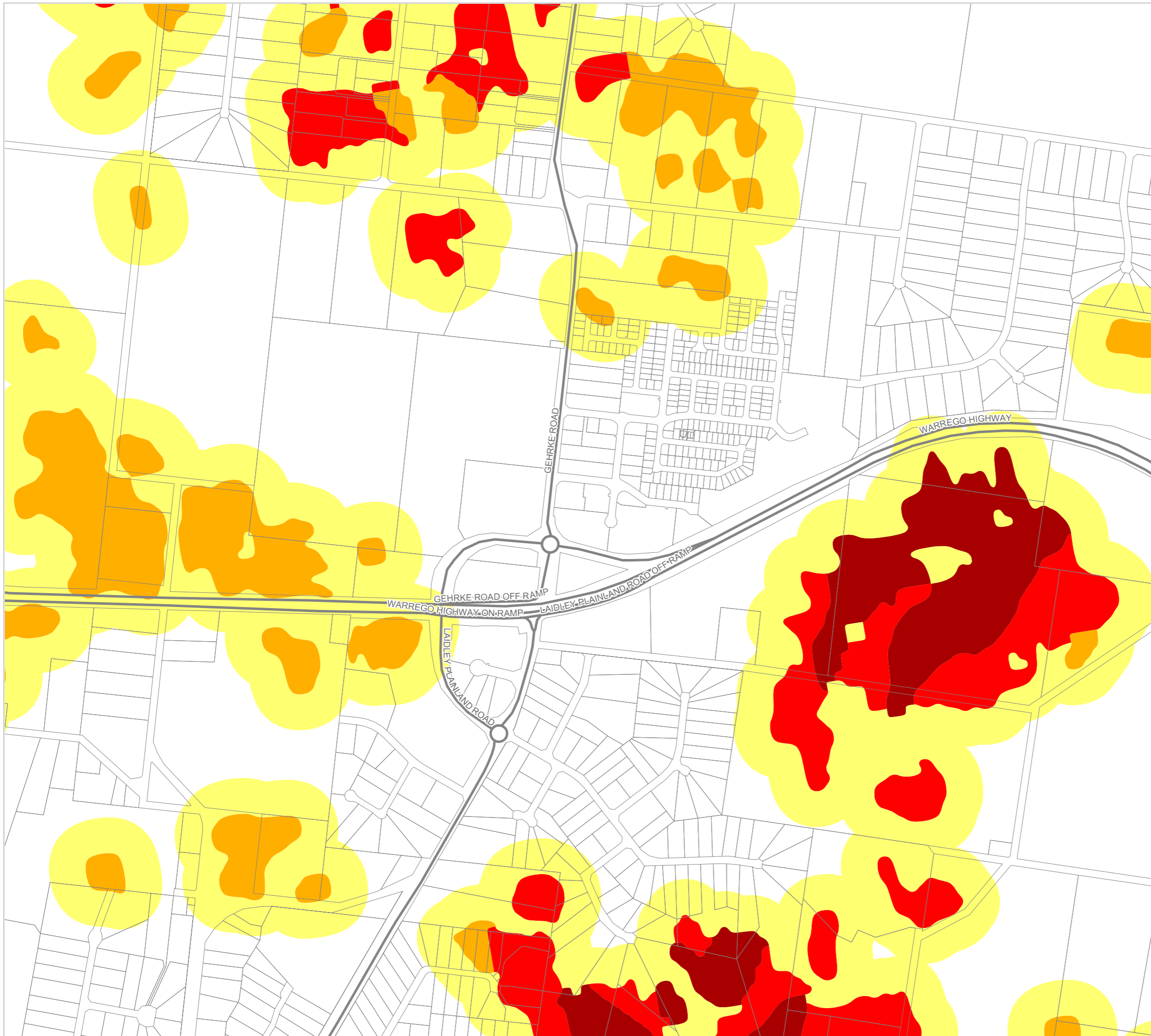
OM04 Bushfire hazard overlay map

Bushfire Hazard

-  BH1 - Very High Potential Bushfire Intensity
-  BH2 - High Potential Bushfire Intensity
-  BH3 - Medium Potential Bushfire Intensity
-  BH4 - Potential Impact Buffer

Other Features

-  Major Road
-  Railway Network
-  Cadastral Lots
-  Local Government Boundary
-  Watercourse or waterbody



NOTE

Refer to online or electronic mapping where layers overlap or labels obstruct the data on the map.

MAP INFORMATION

Based on or contains data sourced from the State Government which gives no warranty in relation to the data (including accuracy, reliability, completeness or suitability) and accepts no liability (including without limitation, liability in negligence) for any loss, damage or costs (including consequential damage) relating to any use of the data.
© Copyright Lockyer Valley Regional Council 2023

DATA SOURCES

Cadastral data weekly - whole of State Queensland, Rail network - Queensland, Baseline roads and tracks - Queensland: © State of Queensland (Department of Resources) 2023. Bushfire prone area - South East Queensland: © State of Queensland (Queensland Fire and Emergency Services) 2020

Gazettal Date: 00/00/0000

Geocentric Datum of Australia (GDA2020 / MGA zone 56)



Date: 19/6/2023

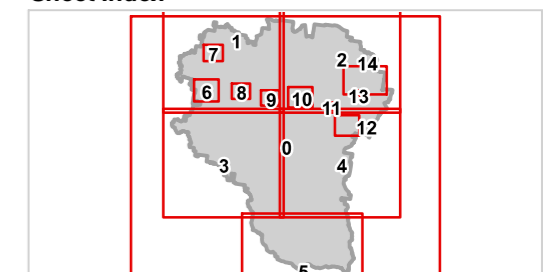
Approx Scale @ A3: 1:10,000

0 0.5



kilometres

Sheet Index



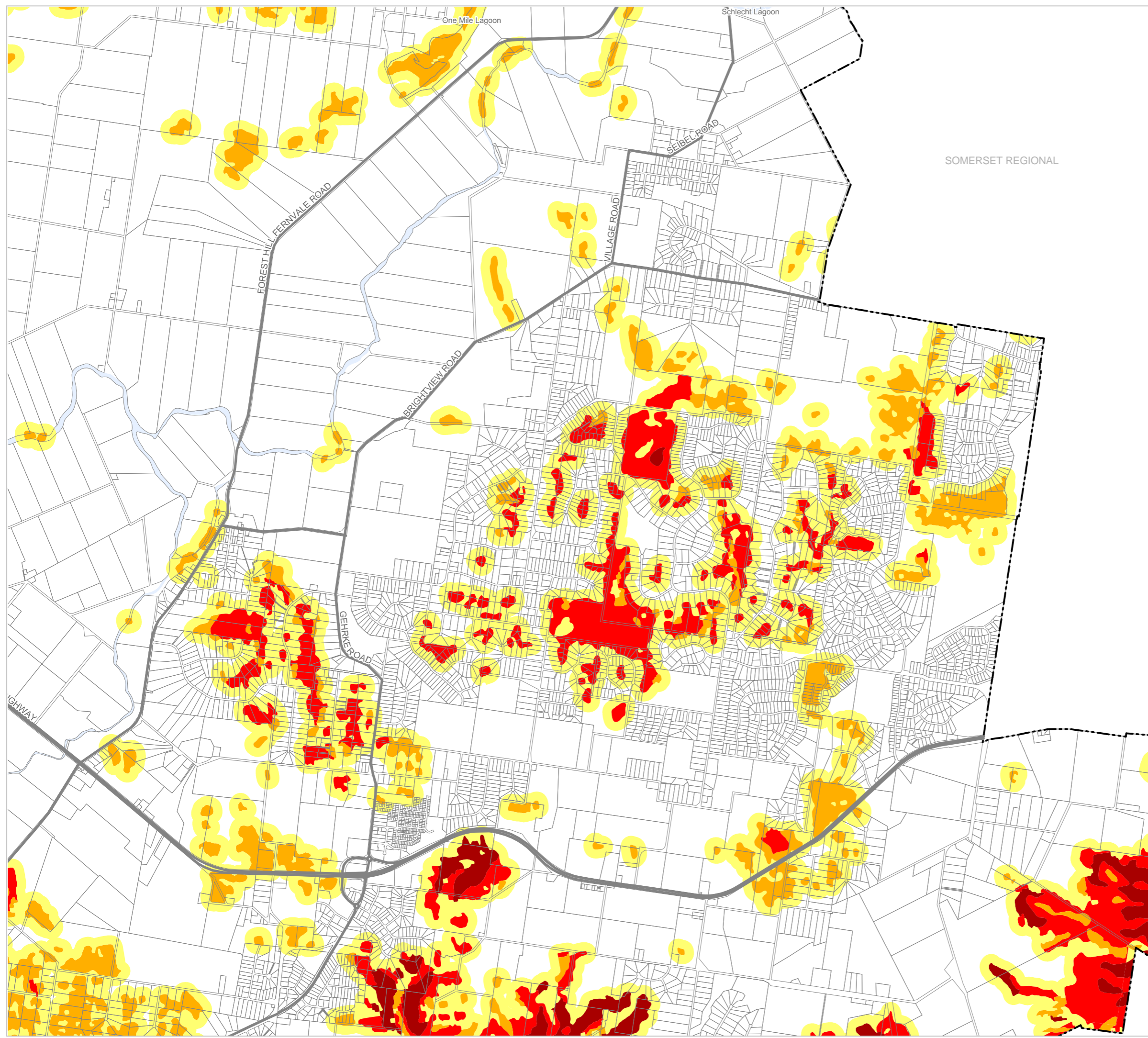
**OM04 Bushfire hazard overlay
Plainland - 13**



Lockyer Valley Regional Council Draft Planning Scheme

REGIONAL COUNCIL

OM04 Bushfire hazard overlay map



SOMERSET REGIONAL

Bushfire Hazard

- BH1 - Very High Potential Bushfire Intensity
- BH2 - High Potential Bushfire Intensity
- BH3 - Medium Potential Bushfire Intensity
- BH4 - Potential Impact Buffer

Other Features

- Major Road
- Railway Network
- Cadastral Lots
- Local Government Boundary
- Watercourse or waterbody

NOTE

Refer to online or electronic mapping where layers overlap or labels obstruct the data on the map.

MAP INFORMATION

Based on or contains data sourced from the State Government which gives no warranty in relation to the data (including accuracy, reliability, completeness or suitability) and accepts no liability (including without limitation, liability in negligence) for any loss, damage or costs (including consequential damage) relating to any use of the data.
© Copyright Lockyer Valley Regional Council 2023

DATA SOURCES

Cadastral data weekly - whole of State Queensland, Rail network - Queensland, Baseline roads and tracks - Queensland: © State of Queensland (Department of Resources) 2023. Bushfire prone area - South East Queensland: © State of Queensland (Queensland Fire and Emergency Services) 2020

Gazettal Date: 00/00/0000

Geocentric Datum of Australia (GDA2020 / MGA zone 56)



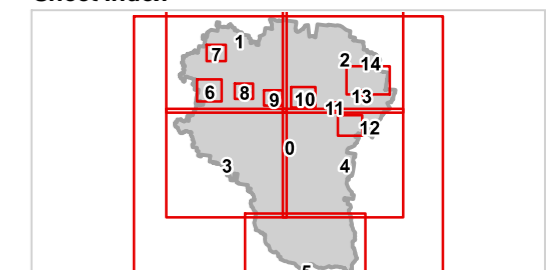
Date: 19/6/2023

Approx Scale @ A3: 1:40,000



kilometres

Sheet Index



OM04 Bushfire hazard overlay
Regency Downs - 14