



# Lockyer Valley Regional Council Draft Planning Scheme

REGIONAL COUNCIL

## SFM5 Strategic Framework - Living in a great place map

### Growing Communities

#### Land use

- Urban areas
- Rural residential areas
- Rural areas
- Natural areas
- Aboriginal cultural heritage investigation area

#### Centres

- Township
- Rural Hamlet
- Heritage town

### Existing Facilities

#### Emergency services

- Ambulance Station
- Fire Station
- Police Station
- State Emergency Service Facility

#### Education and health

- Public Hospital
- School
- University

### Future Facilities

- Ambulance Station
- Fire Station
- Police Station

#### Other community facilities

- Regional Centre
- District Centre
- Local Centre

#### Recreation

- Regional sport and recreation
- Hospital
- TAFE
- Regional sport and recreation

### Other Features

- Major Road
- Railway Network
- Local government boundary
- Watercourse / Waterbody

### NOTE

Refer to online or electronic mapping where layers overlap or labels obstruct the data on the map.

### MAP INFORMATION

Based on or contains data sourced from the State Government 2021 which gives no warranty in relation to the data (including accuracy, reliability, completeness or suitability) and accepts no liability (including without limitation, liability in negligence) for any loss, damage or costs (including consequential damage) relating to any use of the data.  
© Copyright Lockyer Valley Regional Council 2023

### DATA SOURCES

Cadastral data weekly - whole of State Queensland, Rail network - Queensland, Baseline roads and tracks - Queensland. © State of Queensland (Department of Natural Resources, Mines and Energy) 2020.

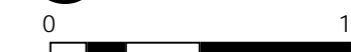
Gazettal Date: 00/00/0000

Geocentric Datum of Australia (GDA2020 / MGA zone 56)



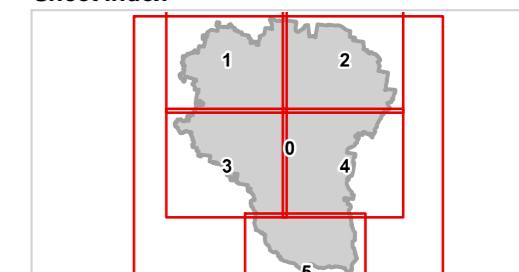
Date: 20/6/2023

Approx Scale @ A3: 1:250,000

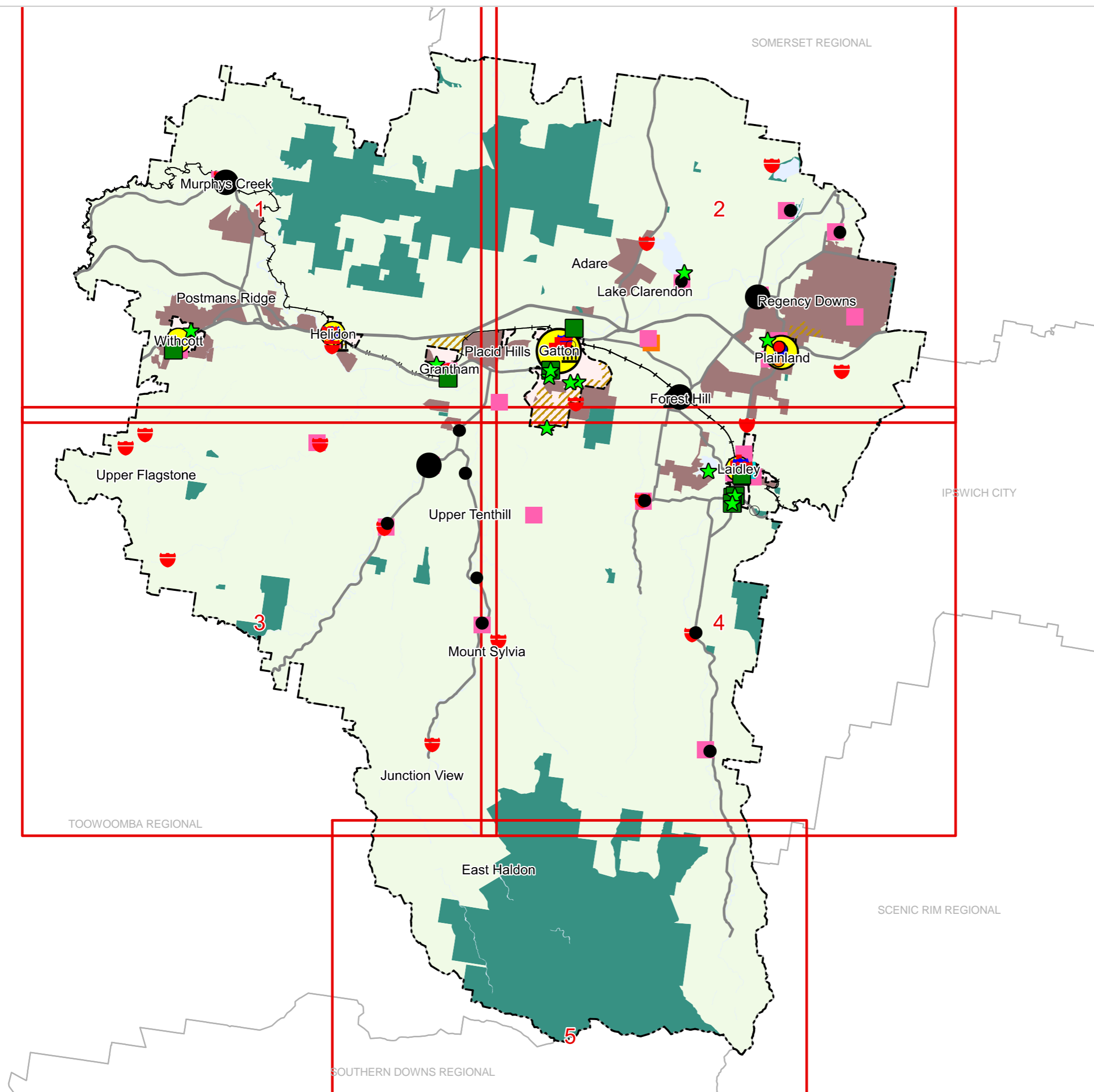


kilometres

### Sheet Index



SFM5 Living in a great place  
LVRC-00





# Lockyer Valley Regional Council Draft Planning Scheme

## SFM5 Strategic Framework - Living in a great place map

**Growing Communities**

Land use

- Urban areas
- Rural residential areas
- Rural areas
- Natural areas
- Aboriginal cultural heritage investigation area

Centres

- Township
- Rural Hamlet
- Heritage town

**Existing Facilities**

Emergency services

- Ambulance Station
- Fire Station
- Police Station
- State Emergency Service Facility

Other community facilities

- Regional Centre
- District Centre
- Local Centre

Education and health

- Public Hospital
- School
- University

Recreation

- Regional sport and recreation

**Future Facilities**

- Ambulance Station
- Fire Station
- Police Station
- Hospital
- TAFE
- Regional sport and recreation

**Other Features**

- Major Road
- Railway Network
- Local government boundary
- Watercourse / Waterbody

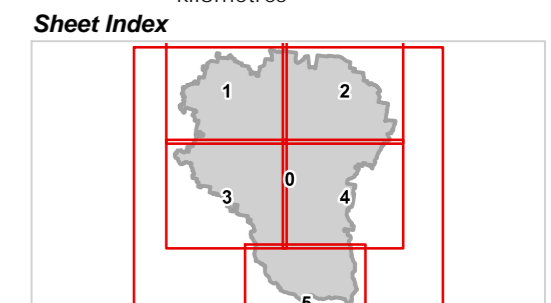
**NOTE**  
Refer to online or electronic mapping where layers overlap or labels obstruct the data on the map.

**MAP INFORMATION**  
Based on or contains data sourced from the State Government 2021 which gives no warranty in relation to the data (including accuracy, reliability, completeness or suitability) and accepts no liability (including without limitation, liability in negligence) for any loss, damage or costs (including consequential damage) relating to any use of the data.  
© Copyright Lockyer Valley Regional Council 2023

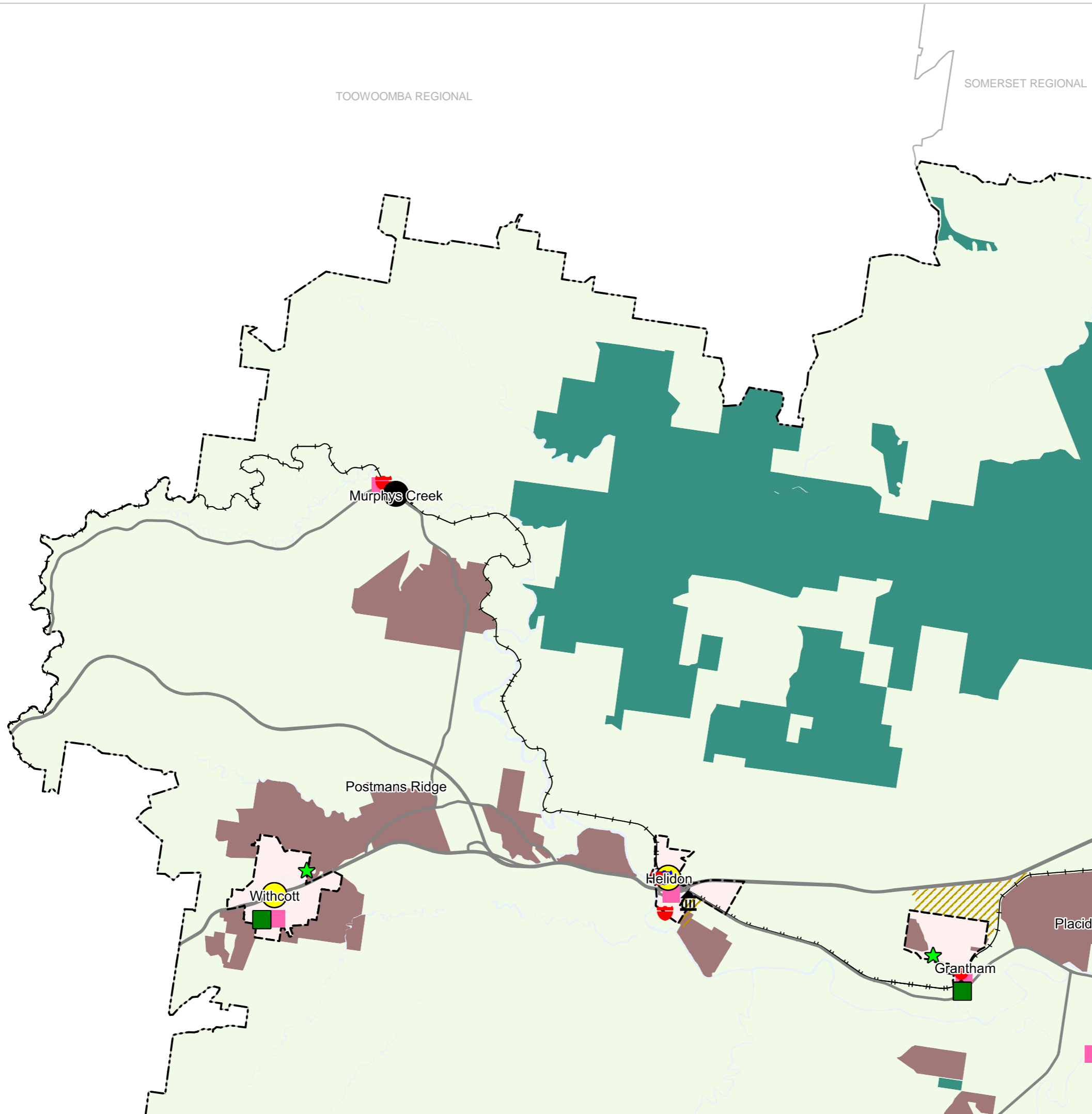
**DATA SOURCES**  
Cadastral data weekly - whole of State Queensland, Rail network - Queensland, Baseline roads and tracks - Queensland. © State of Queensland (Department of Natural Resources, Mines and Energy) 2020.

Gazettal Date: 00/00/0000  
Geocentric Datum of Australia (GDA2020 / MGA zone 56)

Date: 20/6/2023  
Approx Scale @ A3: 1:100,000



**SFM5 Living in a great place  
LGA north-west-01**

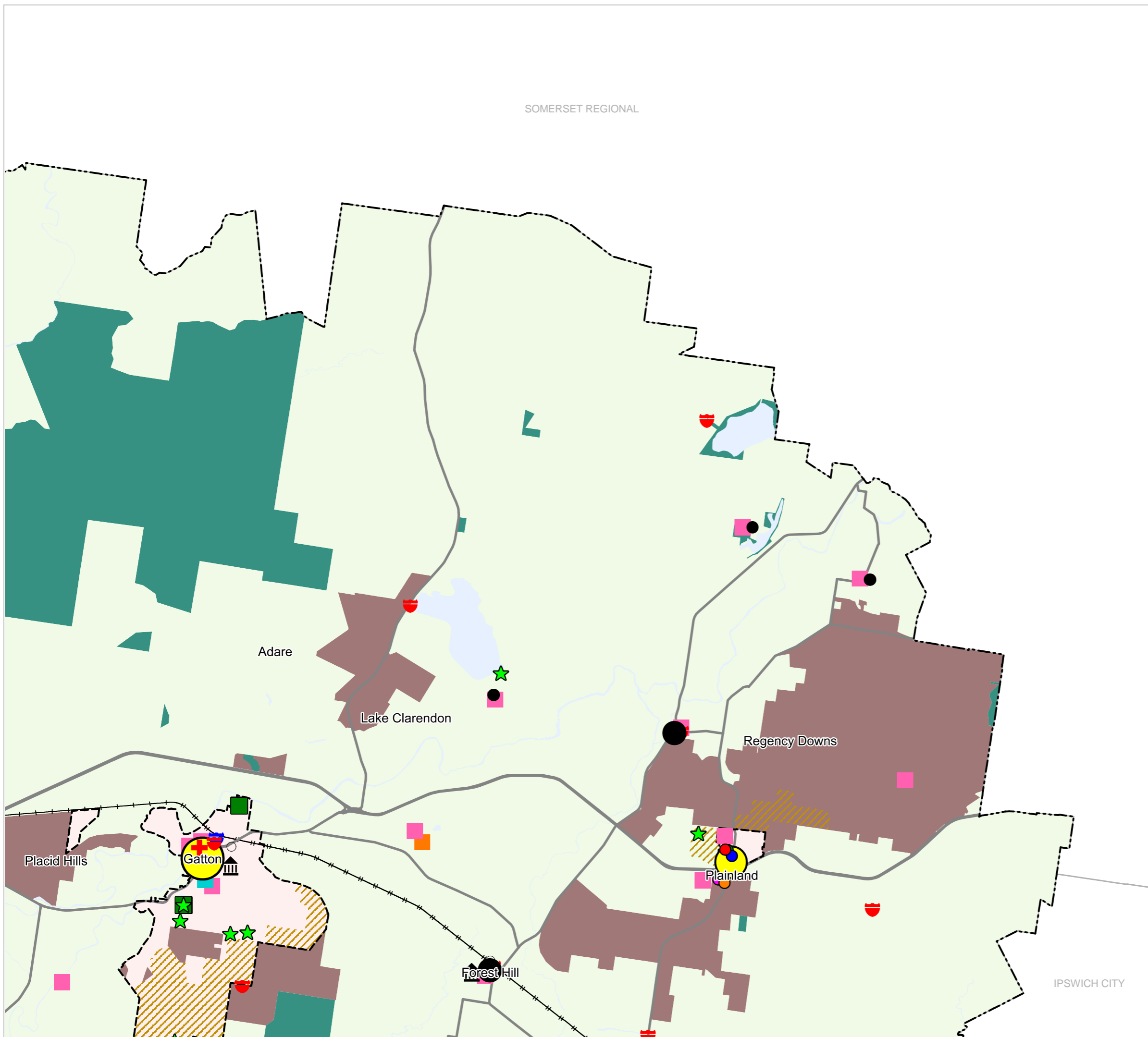




# Lockyer Valley Regional Council Draft Planning Scheme

REGIONAL COUNCIL

## SFM5 Strategic Framework - Living in a great place map



### Growing Communities

#### Land use

- Urban areas
- Rural residential areas
- Rural areas
- Natural areas
- Aboriginal cultural heritage investigation area

#### Centres

- Township
- Rural Hamlet
- Heritage town

### Existing Facilities

#### Emergency services

- Ambulance Station
- Fire Station
- Police Station
- State Emergency Service Facility

#### Education and health

- Public Hospital
- School
- University

### Future Facilities

- Ambulance Station
- Fire Station
- Police Station

#### Other community facilities

- Regional Centre
- District Centre
- Local Centre

#### Recreation

- Regional sport and recreation
- Hospital
- TAFE
- Regional sport and recreation

### Other Features

- Major Road
- Railway Network
- Local government boundary
- Watercourse / Waterbody

### NOTE

Refer to online or electronic mapping where layers overlap or labels obstruct the data on the map.

### MAP INFORMATION

Based on or contains data sourced from the State Government 2021 which gives no warranty in relation to the data (including accuracy, reliability, completeness or suitability) and accepts no liability (including without limitation, liability in negligence) for any loss, damage or costs (including consequential damage) relating to any use of the data.

© Copyright Lockyer Valley Regional Council 2023

### DATA SOURCES

Cadastral data weekly - whole of State Queensland, Rail network - Queensland, Baseline roads and tracks - Queensland - Queensland. © State of Queensland (Department of Natural Resources, Mines and Energy) 2020.

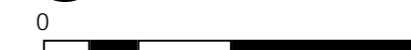
Gazettal Date: 00/00/0000

Geocentric Datum of Australia (GDA2020 / MGA zone 56)

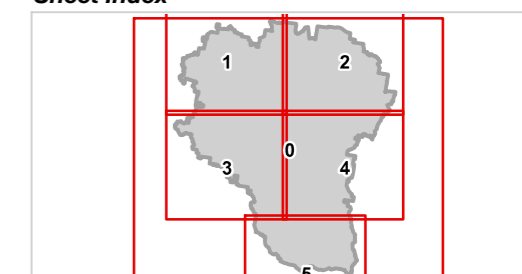


Date: 20/6/2023

Approx Scale @ A3: 1:100,000



### Sheet Index



SFM5 Living in a great place  
LGA north-east-02



# Lockyer Valley Regional Council Draft Planning Scheme

REGIONAL COUNCIL

## SFM5 Strategic Framework - Living in a great place map

### Growing Communities

#### Land use

- Urban areas
- Rural residential areas
- Rural areas
- Natural areas
- Aboriginal cultural heritage investigation area

#### Centres

- Township
- Rural Hamlet
- Heritage town

### Existing Facilities

#### Emergency services

- Ambulance Station
- Fire Station
- Police Station
- State Emergency Service Facility

#### Education and health

- Public Hospital
- School
- University

### Future Facilities

- Ambulance Station
- Fire Station
- Police Station

#### Other community facilities

- Regional Centre
- District Centre
- Local Centre

#### Recreation

- Regional sport and recreation

### Other Features

- Major Road
- Railway Network
- Local government boundary
- Watercourse / Waterbody

### NOTE

Refer to online or electronic mapping where layers overlap or labels obstruct the data on the map.

### MAP INFORMATION

Based on or contains data sourced from the State Government 2021 which gives no warranty in relation to the data (including accuracy, reliability, completeness or suitability) and accepts no liability (including without limitation, liability in negligence) for any loss, damage or costs (including consequential damage) relating to any use of the data.  
© Copyright Lockyer Valley Regional Council 2023

### DATA SOURCES

Cadastral data weekly - whole of State Queensland, Rail network - Queensland, Baseline roads and tracks - Queensland. © State of Queensland (Department of Natural Resources, Mines and Energy) 2020.

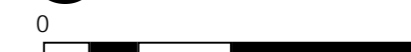
Gazettal Date: 00/00/0000

Geocentric Datum of Australia (GDA2020 / MGA zone 56)

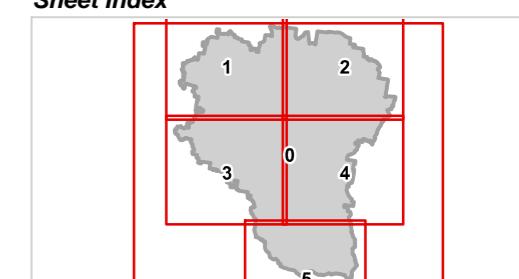


Date: 20/6/2023

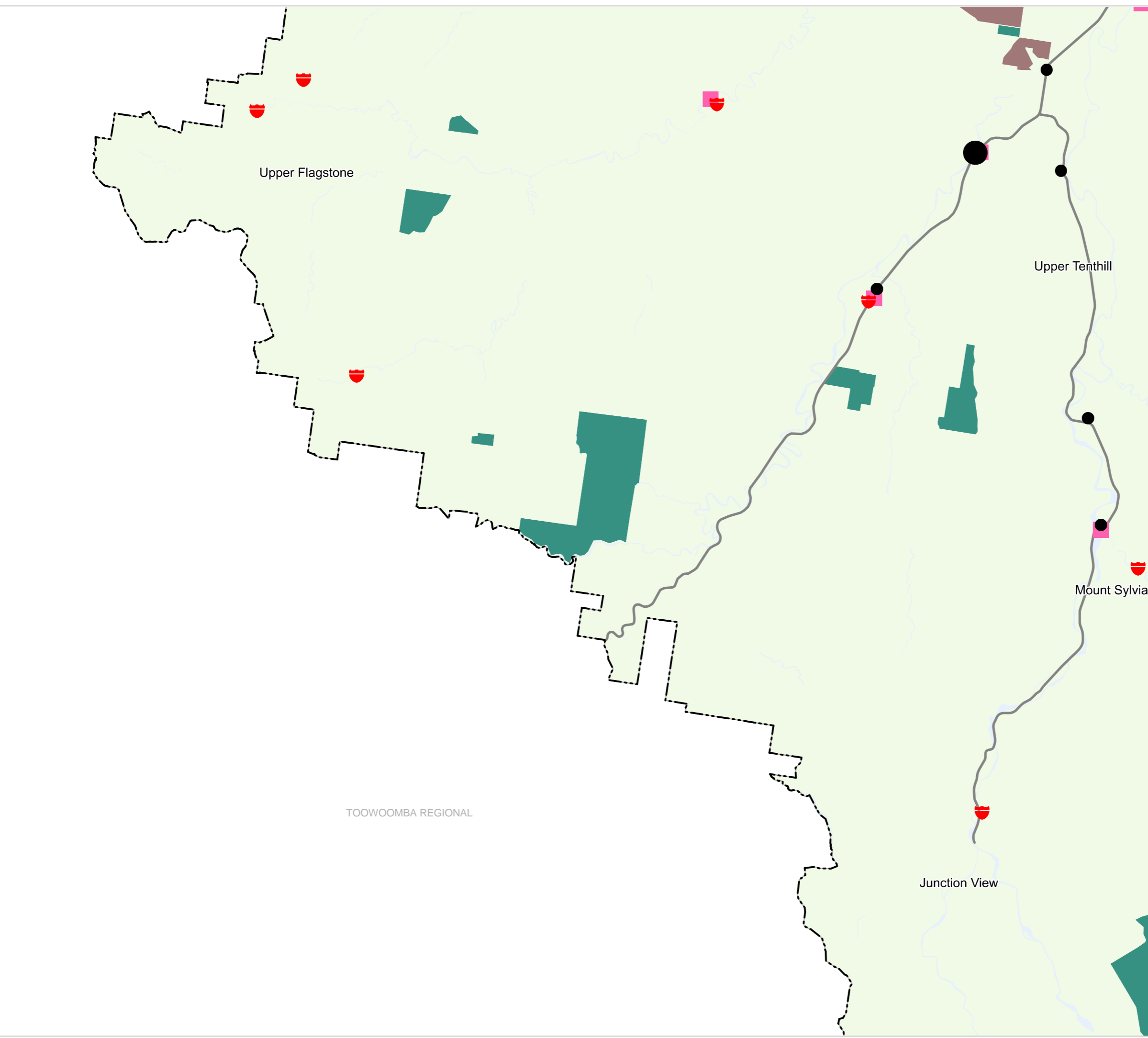
Approx Scale @ A3: 1:100,000



### Sheet Index



SFM5 Living in a great place  
LGA south-west-03



TOOWOOMBA REGIONAL



# Lockyer Valley Regional Council Draft Planning Scheme

REGIONAL COUNCIL

## SFM5 Strategic Framework - Living in a great place map

### Growing Communities

#### Land use

- Urban areas
- Rural residential areas
- Rural areas
- Natural areas
- Aboriginal cultural heritage investigation area

#### Centres

- Township
- Rural Hamlet
- Heritage town

### Existing Facilities

#### Emergency services

- Ambulance Station
- Fire Station
- Police Station
- State Emergency Service Facility

#### Education and health

- Public Hospital
- School
- University

### Future Facilities

- Ambulance Station
- Fire Station
- Police Station

#### Other community facilities

- Regional Centre
- District Centre
- Local Centre

#### Recreation

- Regional sport and recreation
- Hospital
- TAFE
- Regional sport and recreation

### Other Features

- Major Road
- Railway Network
- Local government boundary
- Watercourse / Waterbody

### NOTE

Refer to online or electronic mapping where layers overlap or labels obstruct the data on the map.

### MAP INFORMATION

Based on or contains data sourced from the State Government 2021 which gives no warranty in relation to the data (including accuracy, reliability, completeness or suitability) and accepts no liability (including without limitation, liability in negligence) for any loss, damage or costs (including consequential damage) relating to any use of the data.  
© Copyright Lockyer Valley Regional Council 2023

### DATA SOURCES

Cadastral data weekly - whole of State Queensland, Rail network - Queensland, Baseline roads and tracks - Queensland: © State of Queensland (Department of Natural Resources, Mines and Energy) 2020.

Gazettal Date: 00/00/0000

Geocentric Datum of Australia (GDA2020 / MGA zone 56)

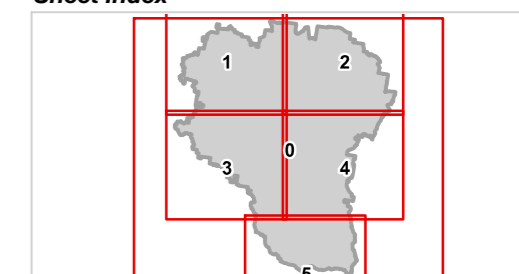


Date: 20/6/2023

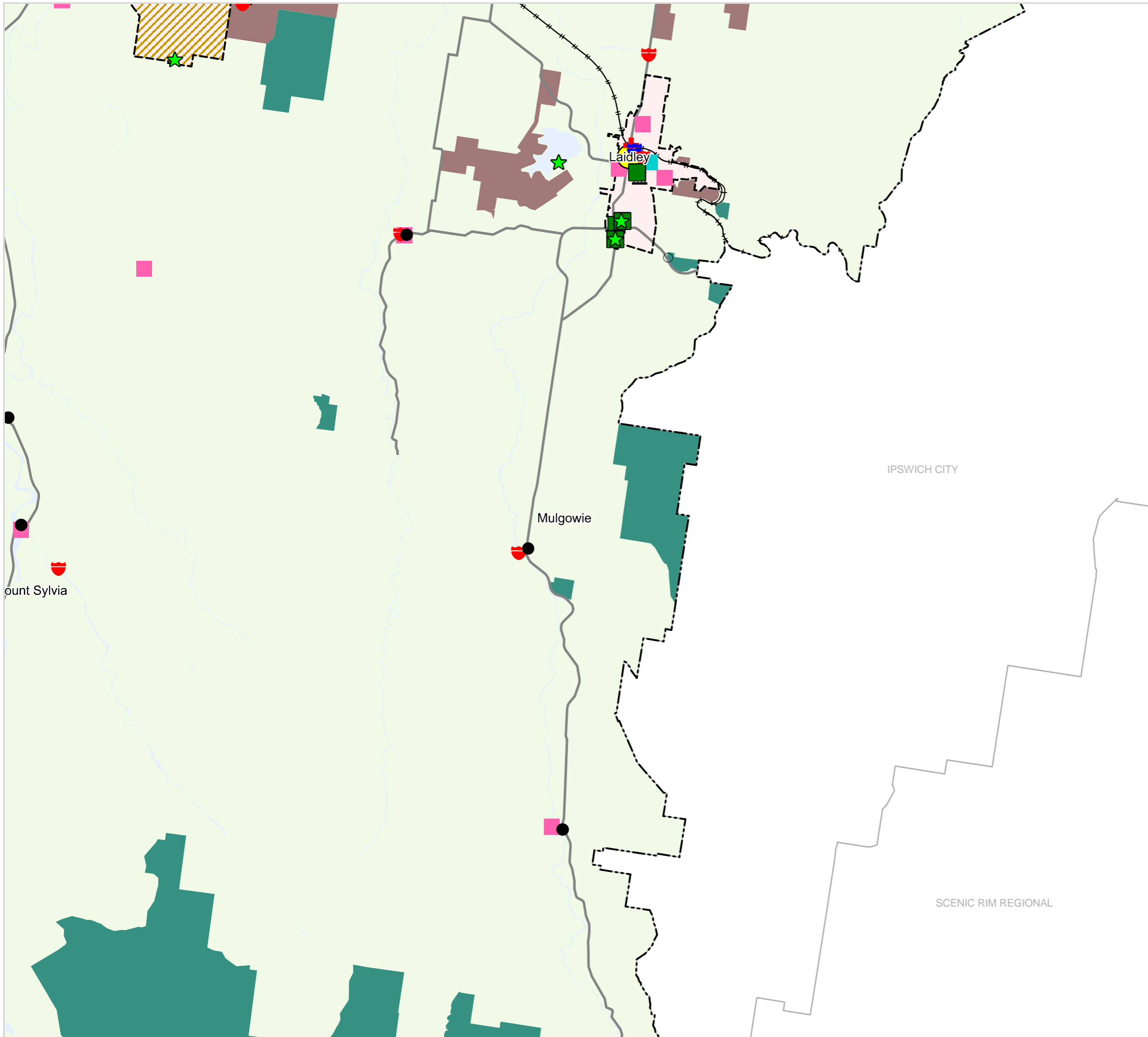
Approx Scale @ A3: 1:100,000



### Sheet Index



**SFM5 Living in a great place  
LGA south-east-04**





# Lockyer Valley Regional Council Draft Planning Scheme

REGIONAL COUNCIL

## SFM5 Strategic Framework - Living in a great place map

### Growing Communities

#### Land use

- Urban areas
- Rural residential areas
- Rural areas
- Natural areas
- Aboriginal cultural heritage investigation area

#### Centres

- Township
- Rural Hamlet
- Heritage town

### Existing Facilities

#### Emergency services

- Ambulance Station
- Fire Station
- Police Station
- State Emergency Service Facility

#### Other community facilities

- Regional Centre
- District Centre
- Local Centre

#### Education and health

- Public Hospital
- School
- University

#### Recreation

- Regional sport and recreation

### Future Facilities

- Ambulance Station
- Fire Station
- Police Station

- Hospital
- TAFE
- Regional sport and recreation

### Other Features

- Major Road
- Railway Network
- Local government boundary
- Watercourse / Waterbody

### NOTE

Refer to online or electronic mapping where layers overlap or labels obstruct the data on the map.

### MAP INFORMATION

Based on or contains data sourced from the State Government 2021 which gives no warranty in relation to the data (including accuracy, reliability, completeness or suitability) and accepts no liability (including without limitation, liability in negligence) for any loss, damage or costs (including consequential damage) relating to any use of the data.  
© Copyright Lockyer Valley Regional Council 2023

### DATA SOURCES

Cadastral data weekly - whole of State Queensland, Rail network - Queensland, Baseline roads and tracks - Queensland. © State of Queensland (Department of Natural Resources, Mines and Energy) 2020.

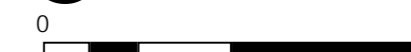
Gazettal Date: 00/00/0000

Geocentric Datum of Australia (GDA2020 / MGA zone 56)



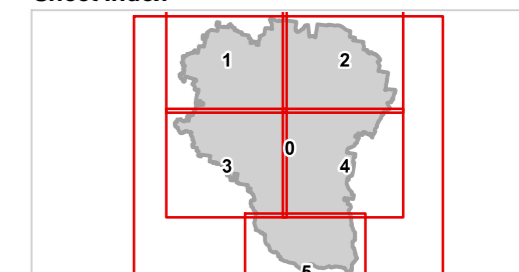
Date: 20/6/2023

Approx Scale @ A3: 1:100,000



kilometres

### Sheet Index



**SFM5 Living in a great place  
LGA south-05**

