

# Zone: Open Space

The purpose of the Open space zone is to provide for:

- local, district and regional parks for the use of residents, and visitors; and
- facilities and infrastructure that support and are required by, users of the parks.

The purpose of the Open space zone is achieved through the following overall outcomes, including but not limited to:

- Development within the zone provides for informal cultural, educational and recreational uses and activities on public or private land that support the needs of the local community.
- Areas available for passive recreation are provided in locations where they contribute to the community’s wellbeing, health and safety.

- Land in this zone remains undeveloped and is used for community activities that are non-permanent, short-term and periodic uses such as an environment facilities and passive recreation.
- Additional lots in the Open space zone are discouraged and are created only where necessary to service community activities and passive recreation. Amalgamation of lots is encouraged to maximise the potential use of the land for recreational purposes.
- Places, buildings or features of a heritage area or heritage place are protected and improved by development to preserve the historical character, amenity and identity of the locality.

## EXAMPLES OF CONSISTENT USES

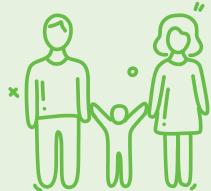
Community use Emergency services Environment facility	Outdoor sport and recreation Park Permanent plantation	Telecommunications facility Utility installation
---	--	---



# Zone: Open Space

## WE WOULD LIKE TO SEE

Community Use



Park



Nature-based Tourism



Outdoor Sport & Recreation



## WE WILL CONSIDER

Telecommunications



Renewable Energy Facility



Utility Installation



Environment Facility



## WE WOULD PREFER NOT TO SEE

Industry



Dwelling House



Shop

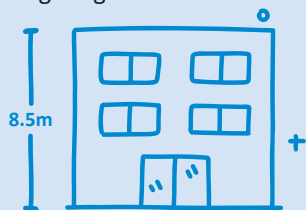


Intensive Animal Industry

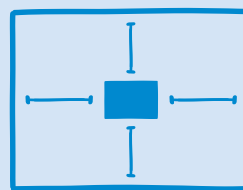


## AS PART OF YOUR DEVELOPMENT WE WILL ASSESS

Building Height - 8.5m maximum



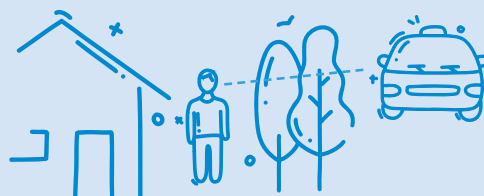
Setbacks - 6m from all boundaries



Water Quality



Crime Prevention Through Environment Design (CPTED)



## FOR MORE INFORMATION

Visit: [www.lockyervalley.qld.gov.au](http://www.lockyervalley.qld.gov.au)  
Contact: Council's Growth & Policy Team on 1300 005 872  
Email: [planningscheme@lvrc.qld.gov.au](mailto:planningscheme@lvrc.qld.gov.au)  
Book: [An appointment with a Planning Officer](#)



Scan the QR code to view the draft planning scheme, scheme maps and access the submissions portal.

